



HIAB iQ.1188 HIPRO

Extreme lifting with precision





Long reach, high capacity and total control – even in urban environments

The HIAB iQ.1188 HIPRO is engineered for demanding lifting where accuracy, stability, and reach are critical.

Designed as a true all-rounder, the HIAB iQ.1188 HIPRO delivers powerful performance across both vertical and horizontal operations while remaining compact and lightweight for its class. Whether working over obstacles, in narrow streets, or on restricted job sites, it enables precise material placement with minimal repositioning – reducing delays, disruption, and operational risk.

With a lifting capacity in the 110 tonne-metre class, the HIAB iQ.1188 HIPRO achieves exceptional reach without the size and weight typically associated with larger cranes. Vertical reach extends up to 38.5 m and horizontal reach up to 34.4 m, with even greater capability available when equipped with the specially designed JIB. This combination allows operators to handle complex lifts efficiently while maximising payload and installation flexibility.

At the core of the crane is SPACEevo, Hiab's advanced control system technology that converts hydraulic power into smooth, responsive, and highly precise movement. Real-time monitoring of load, stability, and crane position

supports safe operation in technically demanding situations, helping prevent overload, instability, and unintended motion while maintaining full performance throughout the lift cycle.

For contractors and operators, this translates into measurable advantages: greater control on constrained sites, more accurate load placement, improved stability on uneven ground, and increased safety margins without sacrificing productivity.

Built around Hiab's fully integrated system architecture – including SPACEevo control system technology, advanced valves, and intuitive remote operation – the HIAB iQ.1188 HIPRO delivers reliability, durability, and a low total cost of ownership.

Optional MEWP-prepared configurations further expand versatility by enabling certified personnel lifting, allowing one machine to perform multiple roles on site.

Heavy loads, long reach, and tough conditions are everyday realities. The HIAB iQ.1188 HIPRO is your reliable colleague built to handle them all – delivering controlled, efficient performance that keeps projects moving safely and predictably.

Innovation built in



SPACEevo

The SPACEevo control system technology is the brain inside the crane, improving productivity, safety, and efficiency through intuitive controls, advanced sensor-based safety systems, and optimised energy use. The precision and rapid movements save time and reduce the risk of costly damage.

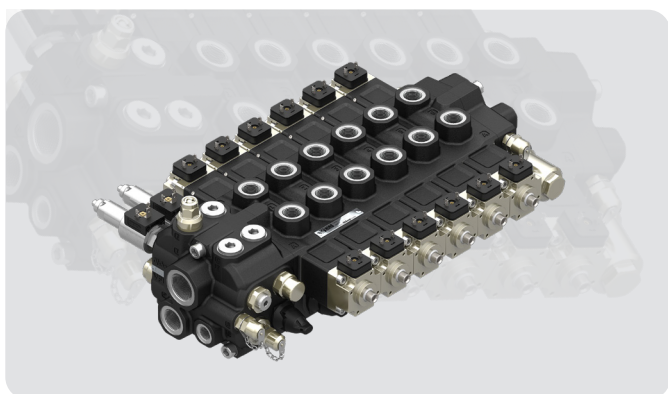
The open, modular nature of SPACEevo allows for the addition of new functionalities and features over time, helping to

future-proof your crane. This ensures the HIAB iQ.1188 HIPRO has a long operating life and a higher residual value.

The dual-core processor, sensors, actuators, and new harness design ensure the crane works in all conditions, giving the crane the power it needs while increasing reliability and durability for completing the most difficult jobs.

Olsbergs V200 hydraulic control valves

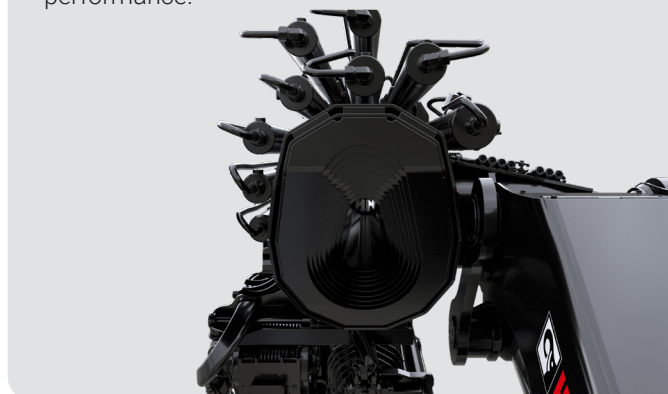
Olsbergs hydraulic control valves are designed specifically for loader cranes – and have been developed for that purpose for over 40 years. Unique to the Olsbergs V200 control valve is the electro-hydraulic actuator with position feedback, called the P8, which makes it possible to achieve extremely precise control of the valve regardless of flow forces. These solutions are essential for the smooth and accurate operation of Hiab's truck-mounted loader cranes.



V12-Power boom

The innovative V12-Power boom profile is designed specifically for applications where long reach for heavy loads is key. It enables an optimal payload-to-weight ratio and a compact crane design, giving you the highest level of lifting performance in this crane category and leaving more space for payload.

Hi-tech methodologies and tools used to produce this unique shape also result in the highest quality levels, ensuring reliability and durability to back up the powerful performance.



Driving the crane of the future

Operators are in total control with advanced features that deliver precision, efficiency, and safety.



Variable Stability Logic Plus (VSL+)

VSL+ is a safety system that maximises capacity by calculating stability according to the position of the stabiliser legs and the total weight of the truck. Accounting for the true load, it can provide significantly more lifting capacity when it really matters. Whether you're working on uneven terrain or with partially extended stabilisers, VSL+ ensures you can lift heavier loads safely.

VSL+ also improves stability during vertical reach by using a shortened stabiliser opening, allowing you to work in more constrained settings like urban environments. With VSL+, you can lift more, and do it faster, and safer, even in the most challenging conditions.



[See how VSL+ maximises capacity](#)



CombiDrive 4

Weighing only 2.2 kg with a long battery life of up to 9.5 hours, the ergonomic CombiDrive 4 remote is easy to handle during long shifts and comfortable to use even when wearing gloves. The eight-function controller with haptic feedback and the high-resolution colour tri-display enable precise operation and full focus on the task at hand.

Safety is built in with integrated lighting, as well as Confirmed View sensors that track the operator's position, hazard lights that alert the surrounding environment, and puddle lights for improved visibility. If the remote control is dropped, communication with the truck is immediately interrupted, and operation can only resume once the remote is restarted, preventing any unintended movement. The smart, customisable CombiDrive 4 remote supports skilled operators with intelligent crane management that enhances precision and control.

Optional



Synchronized Distance Control (SDC)

SDC automatically keeps the load at a set distance from the crane's tip while you only operate the extension movements from the remote. This takes away the stress of handling multiple functions and adds efficiency to repetitive tasks.

The system improves safety and reduces operational costs by avoiding damage to people, equipment, and objects. It's especially useful when handling loads that are farther and higher away from the operator, where visibility becomes the main obstacle to safe movement. Augmented drive assistance benefits operators of all skill levels, making complex lifts more manageable.

Optional



Engine Control

Engine Control gives crane operators the ability to start, stop, and adjust the truck's engine remotely, directly from the CombiDrive 4 remote control. It's a smart feature designed to reduce idle time, fuel use, and environmental impact – all while improving operational convenience.

The Automatic Start/Stop system ensures the engine runs only when it's needed, while the Dynamic RPM Adjustment adjusts the truck engine RPM based on real-time crane activity, using the precise amount of power required for each task. Save on fuel, reduce emissions, and extend the life of your engine, without stepping out of position.

[See how Engine Control gives you smarter power](#)



nDurance

Protect your investment and secure long-term performance with nDurance – the anti-corrosive protection. It's a technologically advanced pre-treatment and paint process, based on nanotechnology combined with state-of-the-art e-coating and powder painting, and this process will keep your crane protected and visually appealing year after year.



Automatic Speed Control (ASC)

This feature, unique to Hiab, gives an increase in lifting capacity of up to 10%, all in one smooth, continuous motion. It engages automatically as you reach the regular capacity limit, meaning that you can still lift the load where other cranes would have come to a complete stop. To compensate for the capacity boost, the speed of the inner and outer boom is slightly reduced, but capacity ceiling, safety, and efficiency are significantly increased.



Load Stability System for vertical movements (LSS-V)

LSS automatically compensates for unintentionally excessive lever movement in vertical operations, making crane operation faster and smoother while protecting the cargo, the crane, and the surroundings against potential damage.

Built to last

Engineering excellence, industry-leading workmanship, and durable, innovative materials give you long-term peace of mind.

FIVE YEARS industry-leading warranty on steel structure and battery modules.

TWO YEARS warranty for general parts, including:

- Painting
- Hoses
- Seals
- Electric components



Automatic Duty Control (ADC)

Our patented ADC function is a fully automatic system designed to optimise crane performance in suspended load applications. By intelligently managing duty parameters and dynamic load factors, ADC enables up to 10% higher effective utilisation within approved operating conditions – without increasing structural stress or accelerating fatigue. This results in greater operational flexibility, reduced long-term maintenance demands, and improved productivity during high-demand lifts – all while maintaining compliance with the crane's certified load ratings.



Optional

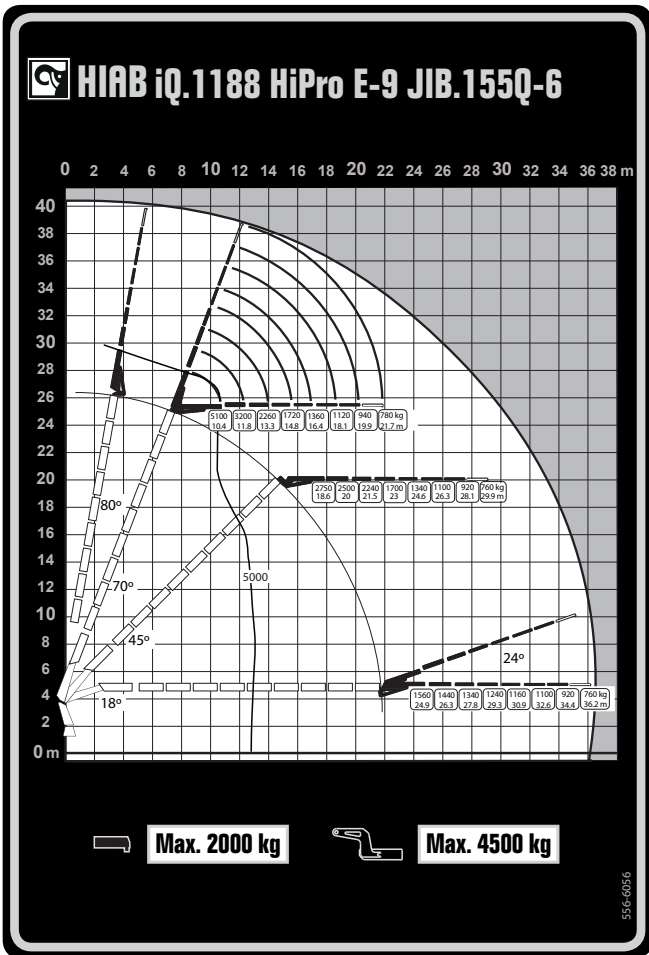
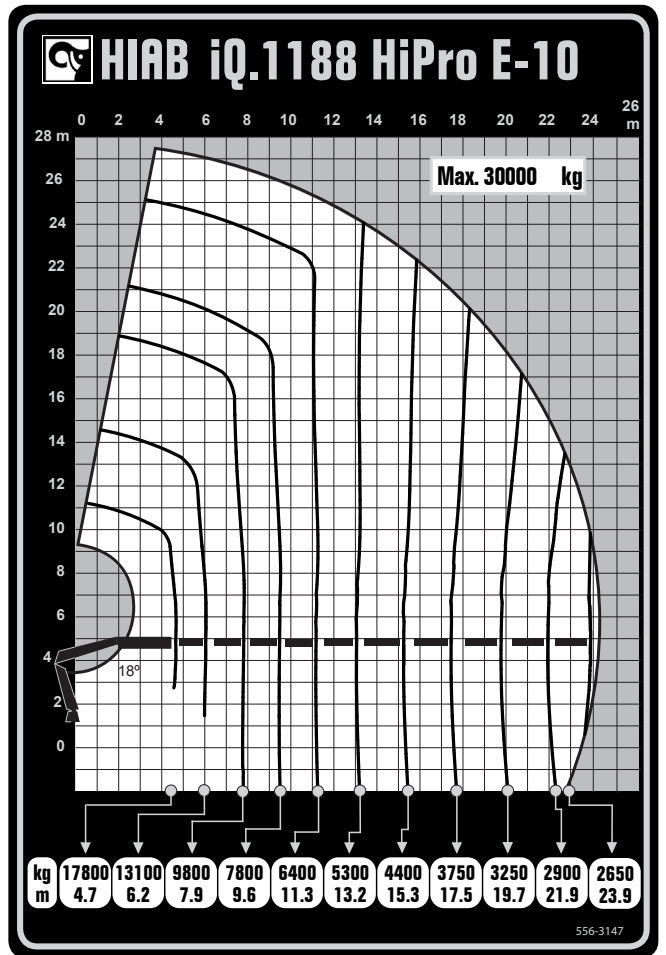
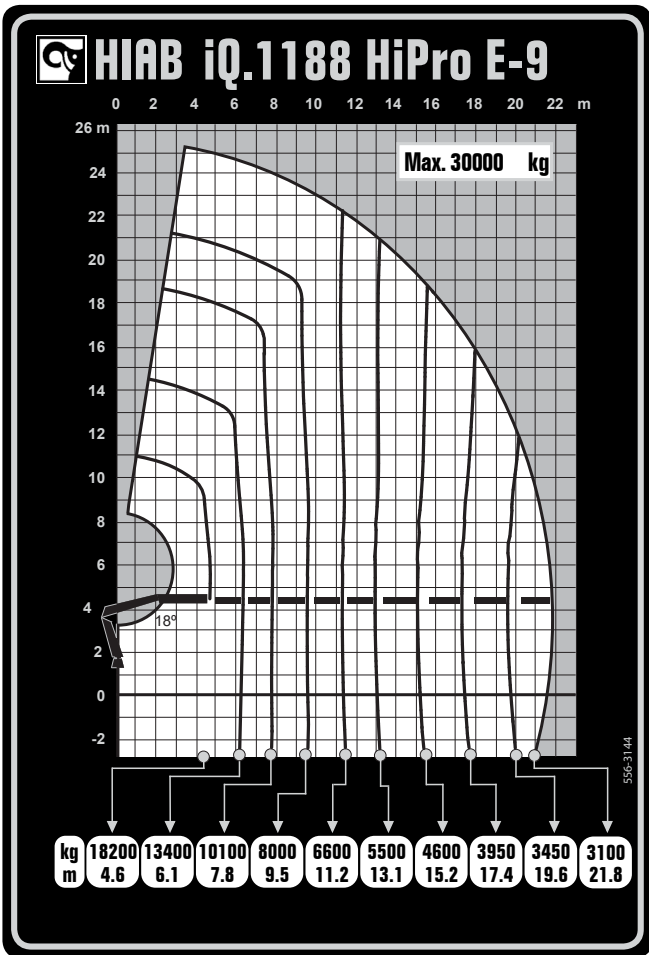
Semi-Automatic Folding (SAF)

SAF assists with automatic folding and unfolding of the crane, reducing setup time and operator effort while helping you maximise productivity.

Technical specifications

Technical data	E-9	E-9 JIB.155Q-6	E-10
Lifting capacity (kNm)	825	825	820
Outreach, hydraulic extensions (m)	21.9	34.6	24
Outreach, with manual extension (m)		36.4	
Installation space, rotation area incl. (mm)	1847	2095	1847
Height in folded position (mm)	2507	2731	2507
Weight without stabilisers (kg)	8053	9497	8229
Weight of stabiliser (kg)	1151	1151	1151
Oil flow	140-100 l/min	140-100 l/min	140-100 l/min





Additional load diagrams are available.
Find the configuration that suits your needs



Boost productivity and flexibility with the right accessories

Extend the versatility of your Hiab crane by adding one or more tools from the wide range of our accessories. Manufactured to the highest standards, they enhance functionality and performance.



Pallet fork

Handling loads with a pallet fork has many advantages. Since the load is palletised and lifted from underneath, it's possible to lift many different types of loads. A pallet fork is also less expensive than a brick grab, which is the main alternative.



Brick grab

Using a brick grab offers many benefits, including speedier handling of your loads. The load doesn't have to be palletised, and it can be handled even in awkward positions where space is limited. Hiab brick grabs are extremely versatile and robust.



Clamshell buckets

We have a wide range of clamshell buckets available for your loader crane, where the right choice depends on your current operations – and your future plans.

Options range from narrow digging buckets for cable work, to versatile midsize buckets for lifting and digging, and large-volume scooping buckets for moving bulk material. Paired with the right rotator and accessories, your bucket becomes a complete solution built for maximum daily productivity.

MEWP personnel baskets

Our MEWP personnel baskets are compliant with the latest EN280:2022-1 safety standards, providing a safe and stable solution for personnel lifting. Available in Gravity Leveling or Hydraulic Self-Leveling versions, the baskets automatically maintain a balanced position for enhanced safety and operator comfort – even in changing conditions.

Built for durability and reliable performance at height, they are ideal for maintenance applications and fully compatible as an accessory option with MEWP-prepared Hiab cranes equipped with the SPACEevo control system.



[Explore our wide range of loader crane accessories](#)



Services that keep your equipment working



Your customers depend on you. To deliver every day, your equipment must work reliably. HiPerform is Hiab's complete service offering. It brings together maintenance, connected equipment data, and operator training in one package. The goal is simple: fewer breakdowns, better planning, safer operators, and longer equipment life. HiPerform includes three parts: ProCare™, HiConnect™, and HiSkill™.

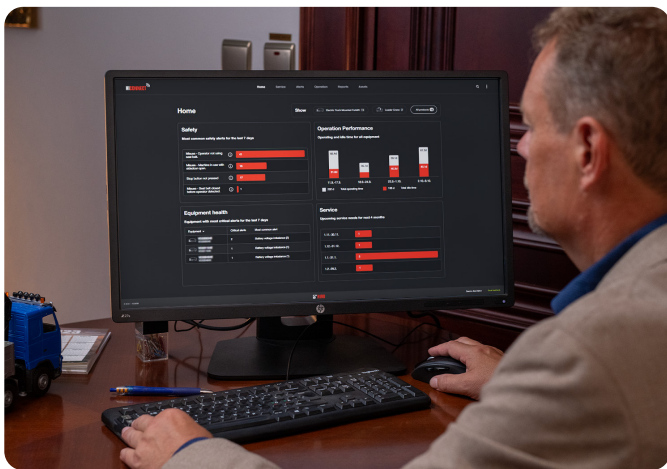
Planned service with fixed costs

ProCare™ is a preventive service agreement for your Hiab equipment. It covers regular maintenance and inspections for a fixed fee. With ProCare™, your equipment is serviced by trained technicians at the right intervals. This helps prevent unexpected breakdowns and costly repairs. You know your service costs in advance and can plan your business with fewer surprises. You choose the service level that fits your operation – we take care of the maintenance.



Know how your equipment is used

HiConnect™ connects your loader crane and gives you access to useful equipment data. You can see how the crane is being used, check service history, and follow upcoming maintenance needs. Because the information is based on actual usage, it's easier to plan service at the right time and reduce unnecessary downtime. With HiConnect™, you have a better overview and better control of your fleet.



Train operators in a safe environment

HiSkill™ is a training simulator that helps operators practice crane operation safely. It combines virtual reality with real controls so operators can train without risk to people, loads, or equipment.

Operators can practice different lifting situations, improve their skills, and gain confidence before working on real jobs. Better training helps reduce accidents, avoid damage, and improve everyday performance.



BUILT TO PERFORM



Hiab (Nasdaq Helsinki: HIAB) is a leading provider of smart and sustainable on-road load handling solutions, committed to delivering the best customer experience every day with the most engaged people and partners. Hiab's premium equipment includes HIAB, EFFER, ARGOS and ING loader cranes, MOFFETT and PRINCETON truck mounted forklifts, LOGLIFT forestry cranes, JONSERED recycling cranes, MULTILIFT skiploaders and hooklifts, GALFAB roll-off cable hoists, ZEPRO, DEL and WALTCO tail lifts, and the service brand HIPERFORM, a comprehensive suite of smart solutions that help maximise the life-cycle value of Hiab's equipment.

www.hiab.com