

TECHNICAL SPECIFICATIONS

X-DUO 112



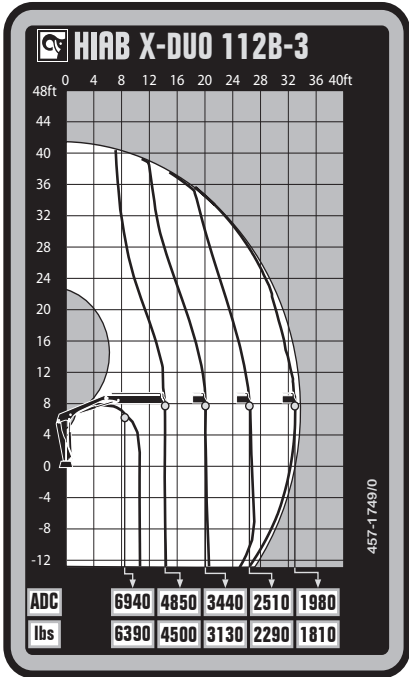
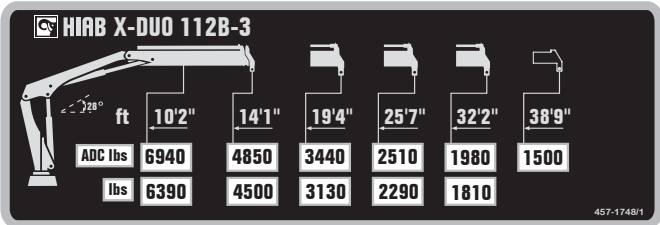
BUILT TO PERFORM



HIAB X-DUO 112

TECHNICAL SPECIFICATIONS

Technical Data	X-DUO 112 B-1	X-DUO 112 B-2	X-DUO 112 B-3	X-DUO 112 E-4	X-DUO 112 E-5
Lifting capacity					
Lifting capacity (ft-lbs)	75 231	71 544	68 593	67 561	65 791
Outreach					
Standard outreach (ft-lbs)	7' 7" - 9 811 13' 9" - 5 468 19' - 3 968 - - -	9' 2" - 7 826 13' 9" - 5 203 19' 4" - 3 704 25' 3" - 2 778 - -	10' 2" - 6 945 14' 1" - 4 850 19' 4" - 3 439 25' 7" - 2 513 32' 2" - 1 984 -	8' 2" - 8 267 14' 5" - 4 674 20' 4" - 3 087 26' 11" - 2 161 33' 10" - 1 631 40' 8" - 1 367 -	8' 2" - 8 047 14' 9" - 4 409 20' 8" - 2 866 27' 2" - 1 940 34' 1" - 1 411 41' - 1 102 47' 11" - 948
Outreach, hydraulic extensions (ft)	19' 9"	26' 3"	33' 2"	40' 9"	48'
Oil and tank					
Rec OilFlow lo (gal/min)	12	12	12	12	12
Rec OilFlow hi (gal/min)	13	13	13	13	13
Work pressure (psi)	4 641	4 641	4 641	4 641	4 641
Slewing					
Slewing torque (ft-lbs)	10 400	10 400	10 400	10 400	10 400
Slewing angle (degrees)	406	406	406	406	406
Dimensions					
Height in folded position (in)	7' 1"	7' 1"	7' 1"	7' 1"	7' 1"
Width in folded position (in)	7' 1"	7' 4"	7' 6"	7' 10"	8' 2"
Weights					
Weight of crane w/o stabilizers (lbs)	2 381	2 646	2 866	3 572	3 814
Additional weight of hose & pipe kit (lbs)	165	165	165	176	176
Weight of stabilizers (lbs)	668	668	668	668	668
Installation space					
Installation space needed (in)	2' 6" - 2' 8"	2' 3" - 2' 8"	2' 7" - 2' 10"	2' 6" - 2' 8"	2' 8" - 2' 11"



Disclaimer. This table shows a few examples of models, and represents some of all options available. With the opportunity to configure your crane, we can provide you with a crane perfectly tailored to your needs. Please contact your local Hiab sales representative for more information on the variety of options we can offer. We reserve the right to make changes. Illustrations, drawings and data are not always in accordance with the latest version or standard model in production. The models in the pictures may present special equipment or colors.

BUILT TO PERFORM

Hiab (Nasdaq Helsinki: HIAB) is a leading provider of smart and sustainable on road load-handling solutions, committed to delivering the best customer experience every day with the most engaged people and partners. Hiab's premium equipment includes HIAB and EFFER loader cranes, MOFFETT and PRINCETON truck mounted forklifts, MULTILIFT skiploaders and hooklifts, GALFAB roll-off cable hoists, and WALTCO tail lifts, and the service brand HIPERFORM, a comprehensive suite of smart solutions that help maximize the life-cycle value of Hiab's equipment. As the industry pioneer, Hiab continues to make on road load-handling smarter, safer and more sustainable to build a better tomorrow.

www.hiabgroup.com

