

TECHNICAL SPECIFICATIONS
eX.142 HIPRO



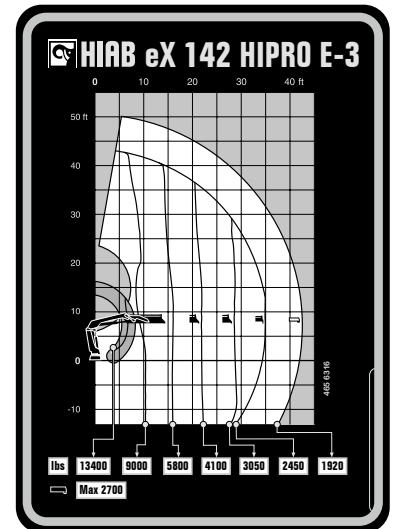
BUILT TO PERFORM



HIAB eX.142 HIPRO

TECHNICAL SPECIFICATIONS

Technical Data	eX.142 HiPro E-2	eX.142 HiPro E-3	eX.142 HiPro E-4	eX.142 HiPro E-5
Lifting capacity				
Lifting capacity (ft-lbs)	95 219	92 121	89 097	86 073
Outreach				
Standard outreach (ft-lbs)	10' 2" - 9 259	10' 2" - 9 039	10' 2" - 8 818	10' 2" - 8 598
	15' 5" - 6 173	15' 9" - 5 842	15' 9" - 5 622	16' 1" - 5 335
	21' 4" - 4 409	21' 8" - 4 101	21' 8" - 3 924	22' - 3 660
	27' 11" - 3 351	28' 3" - 3 086	27' 11" - 2 910	28' 3" - 2 645
	-	35' 1" - 2 425	34' 9" - 2 249	35' 1" - 2 006
	-	-	41' 8" - 1 852	42' - 1 609
Outreach, hydraulic extensions (ft)	28' 3"	35' 4"	42'	49' 6"
Oil and tank				
Rec OilFlow lo (gal/min)	18	18	18	18
Rec OilFlow hi (gal/min)	32	32	32	32
Work pressure (psi)	4 830	4 830	4 830	4 830
Slewing				
Slewing Torque (ft-lbs)	15 120	15 120	15 120	15 120
Slewing angle (degrees)	415	415	415	415
Dimensions				
Height in folded position (in)	7' 6"	7' 6"	7' 6"	7' 6"
Width in folded position (in)	8' 1"	8' 1"	8' 1"	8' 2"
Weights				
Weight of crane w/o stabilizers (lbs)	3 682	3 968	4 211	4 475
Additional weight of hose & pipe kit (lbs)	258	258	284	285
Weight of stabilizers (lbs)	844	844	844	844
Installation Space				
Installation space needed (in)	2' 8" - 5' 1"	3' - 5' 1"	2' 9" - 5' 2"	3' 1" - 5' 6"



This table shows a few examples of models, and represents some of all options available. With the opportunity to configure your crane, we can provide you with a crane perfectly tailored to your needs. Please contact your local dealer for more information on the variety of options we can offer.

Disclaimer. We reserve the right to make changes. Illustrations, drawings and data are not always in accordance with the latest version or standard model in production. The models in the pictures may present special equipment or colours.

BUILT TO PERFORM

Hiab is a leading provider of smart and sustainable load handling solutions. We are committed to delivering the best customer experience every day with the most engaged people and partners. Hiab's premium equipment includes HIAB, EFFER and ARGOS loader cranes, MOFFETT and PRINCETON truck mounted forklifts, LOGLIFT forestry cranes, JONSERED recycling cranes, MULTILIFT skiploaders and hooklifts, GALFAB roll-off cable hoists, and tail lifts under the ZEPRO, DEL and WALTCO brands. As the industry pioneer, Hiab continues to make load handling smarter, safer and more sustainable to build a better tomorrow. Hiab is part of Cargotec Corporation.

www.hiab.com

BD-eX.142HIPRO-EN-WW_240704 MET25-1855B

