



**TECHNICAL SPECIFICATIONS**

# T-DUO 018



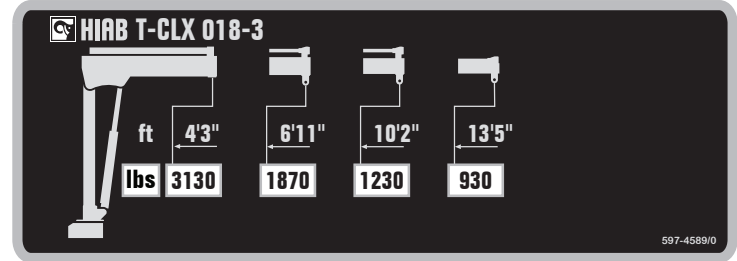
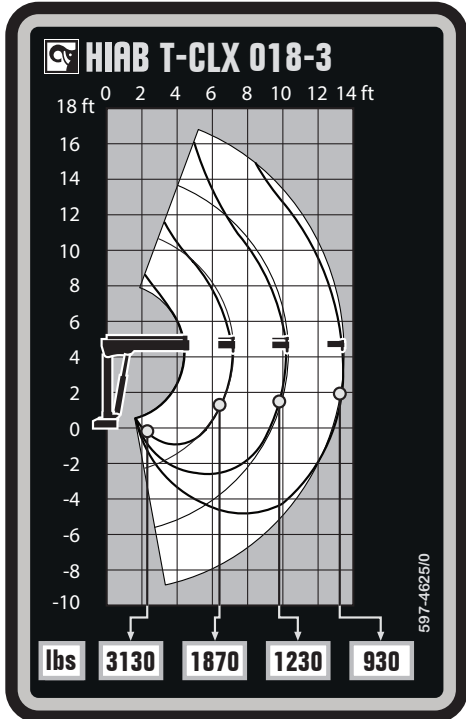
**BUILT TO PERFORM**



# HIAB T-DUO 018

## TECHNICAL SPECIFICATIONS

Technical Data	T-DUO 018 B-1	T-DUO 018 B-2	T-DUO 018 B-3
<b>Lifting capacity</b>			
Lifting capacity (ft-lbs)	13 645	13 424	14 161
<b>Outreach</b>			
Standard outreach (ft-lbs)	3' 7" - 3 748	3' 11" - 3 395	4' 3" - 3 131
	6' 3" - 2 183	6' 7" - 2 028	6' 11" - 1 874
	-	9' 10" - 1 345	10' 2" - 1 235
	-	-	13' 5" - 926
Outreach, hydraulic extensions (ft)	6' 7"	10' 2"	13' 9"
<b>Oil and tank</b>			
Rec OilFlow lo (gal/min)	1	1	1
Rec OilFlow hi (gal/min)	3	3	3
Work pressure (psi)	2 683	2 683	2 683
<b>Slewing</b>			
Slewing torque (ft-lbs)	2 213	2 213	2 213
Slewing angle (degrees)	330	330	330
<b>Dimensions</b>			
Height in folded position (in)	5'	5'	5'
Width in folded position (in)	-	-	-
<b>Weights</b>			
Weight of crane w/o stabilizers (lbs)	397	463	529
Additional weight of hose & pipe kit (lbs)	-	-	-
Weight of stabilizers (lbs)	112	112	112
<b>Installation space</b>			
Installation space needed (in)	7"	7"	7"



Disclaimer. This table shows a few examples of models, and represents some of all options available. With the opportunity to configure your crane, we can provide you with a crane perfectly tailored to your needs. Please contact your local Hiab sales representative for more information on the variety of options we can offer. We reserve the right to make changes. Illustrations, drawings and data are not always in accordance with the latest version or standard model in production. The models in the pictures may present special equipment or colors.

## BUILT TO PERFORM

Hiab (Nasdaq Helsinki: HIAB) is a leading provider of smart and sustainable on road load-handling solutions, committed to delivering the best customer experience every day with the most engaged people and partners. Hiab's premium equipment includes HIAB and EFFER loader cranes, MOFFETT and PRINCETON truck mounted forklifts, MULTILIFT skiploaders and hooklifts, GALFAB roll-off cable hoists, and WALTCO tail lifts, and the service brand HIPERFORM, a comprehensive suite of smart solutions that help maximize the life-cycle value of Hiab's equipment. As the industry pioneer, Hiab continues to make on road load-handling smarter, safer and more sustainable to build a better tomorrow.

[www.hiabgroup.com](http://www.hiabgroup.com)

