

TECHNICAL SPECIFICATIONS

HIAB J1000SR



HIAB

BUILT TO PERFORM

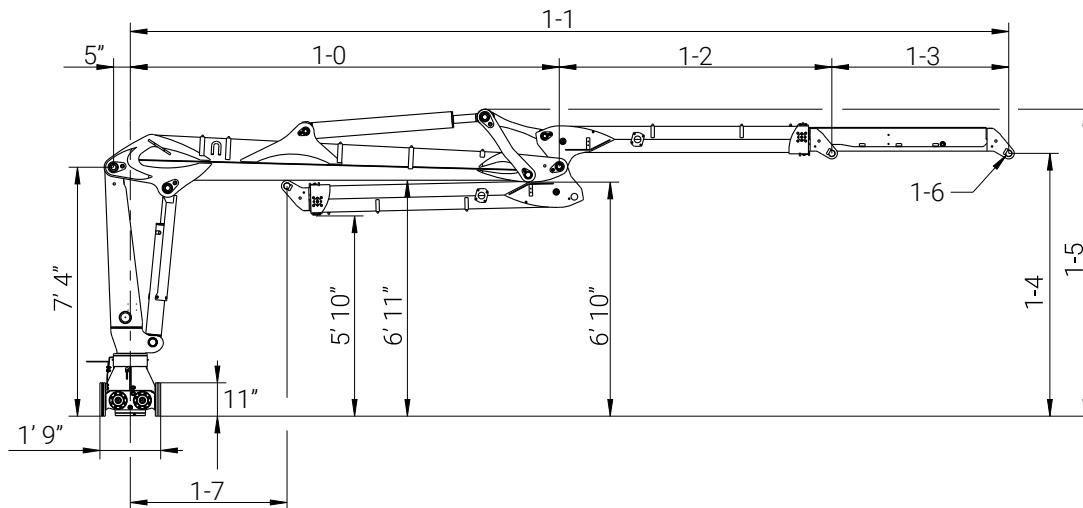
J
SERIES

HIAB J1000SR BASIC DATA

TECHNICAL DATA	J1000SR 79	J1000SR 96
Max. lifting capacity (lb-ft)	75 300	70 100
Outreach, hydraulic extensions (ft)	25' 11"	31' 5"
Outreach / lifting capacity (ft - lb)	10' - 7 200	10' - 6 200
	13' - 5 420	13' - 5 070
	16' - 4 450	16' - 4 140
	20' - 3 750	20' - 3 480
	23' - 3 170	23' - 2 950
	26' - 2 650	26' - 2 560
	-	30' - 2 250
	-	31' - 1 960
Slewing system	Double	
Slewing angle (°)	425	
Slewing torque, gross (lb-ft)	21 990	
Max. working pressure (psi)	2 970	
Recommended oil flow - fixed pump (gal/min), 1-pump	21	
Recommended oil flow - fixed pump (gal/min), 2-pump	2 x 21	
Min recommended oil flow - variable displacement pump (gal/min)	42	
Weight (lb)	3 420	3 740

*Models listed are stationary mount with loose controls.

Side View



MODEL	1-0	1-1 MIN	1-1 MAX	1-2	1-3	1-4	1-5	1-6	1-7
79	152"	248"	311"	96"	63"	93"	109"	Ø 2", B=7"	55"
96	152"	254"	378"	102"	124"	94"	109"	Ø 2", B=7"	50"

Disclaimer. Hiab cranes have been built to meet the highest standards of safety and service life and have been thoroughly tested. Strength calculations for this model have been carried out in accordance with EN13001 in fatigue class S2. Cargotec's certified Quality Assurance System complies with ISO 9001. Some of the items in our literature may be extra equipment. Certain applications may require an official permit. We reserve the right to change technical specifications without prior notice. Hiab cranes produced for EU-countries are CE marked and comply with the European Standard EN12999.

Hiab is the world's leading provider of on-road load handling equipment. Customer satisfaction is the first priority for us. Hiab's product range includes HIAB loader cranes, JONSERED recycling and forestry cranes, LOGLIFT forestry cranes, MOFFETT truck mounted forklifts, and MULTILIFT demountables, as well as DEL, WALTCO, and ZEPRO tail lifts.

www.hiab.us.com
Hiab is part of Cargotec.
www.cargotec.com

hiab.us.com

Hiab USA Inc
12233 Williams Road
Perrysburg, OH 43551 USA
tel. 419 482 6000
fax. 419 482 6001



V2022.08.12

