

**TECHNICAL SPECIFICATIONS**  
**ix.225L**



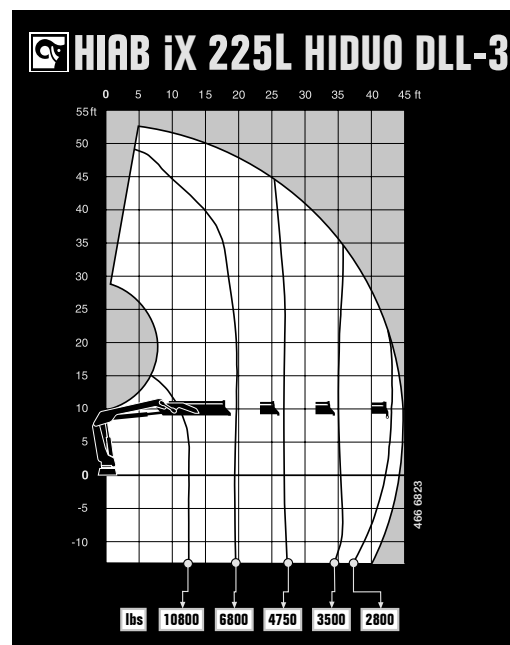
**BUILT TO PERFORM**



# HIAB iX.225L

## TECHNICAL SPECIFICATIONS

Technical Data	iX.225L HiDuo DLL-1	iX.225L HiDuo DLL-2	iX.225L HiDuo DLL-3
<b>Lifting capacity</b>			
Lifting capacity (ft-lbs)	146 185	139 842	135 048
<b>Outreach</b>			
Standard outreach (ft-lbs)	12' 2" - 11 905	12' 2" - 11 464	12' 6" - 10 803
	9' 4" - 7 496	19' 9" - 7 055	19' 8" - 6 834
	26' 7" - 5 468	26' 11" - 5 071	26' 11" - 4 718
	-	34' 9" - 3 880	35' 1" - 3 483
Outreach, hydraulic extensions (ft)	28' 2"	36' 5"	44' 11"
<b>Oil and tank</b>			
Rec OilFlow lo (gal/min)	24	24	24
Rec OilFlow hi (gal/min)	32	32	32
Work pressure (psi)	4 772	4 772	4 772
<b>Slewing</b>			
Slewing Torque (ft-lbs)	20 873	20 873	20 873
Slewing angle (degrees)	415	415	415
<b>Weights</b>			
Weight of crane w/o stabilizers (lbs)	4 266	4 685	5 104
Additional weight of hose & pipe kit (lbs)	159	187	233
Weight of stabilizers (lbs)	944	944	944



**Disclaimer.** We reserve the right to make changes. Illustrations, drawings and data are not always in accordance with the latest version or standard model in production. The models in the pictures may present special equipment or colors.

## BUILT TO PERFORM

Hiab is a leading provider of smart and sustainable load handling solutions. We are committed to delivering the best customer experience every day with the most engaged people and partners. Hiab's premium equipment includes HIAB, EFFER and ARGOS loader cranes, MOFFETT and PRINCETON truck mounted forklifts, LOGLIFT forestry cranes, JONSERED recycling cranes, MULTILIFT skiploaders and hooklifts, GALFAB roll-off cable hoists, and tail lifts under the ZEPRO, DEL and WALTCO brands. As the industry pioneer, Hiab continues to make load handling smarter, safer and more sustainable to build a better tomorrow.

Hiab is part of Cargotec Corporation.

[www.hiab.com](http://www.hiab.com)

