

**TECHNICAL SPECIFICATIONS**  
**ix.138 DUO**



**BUILT TO PERFORM**



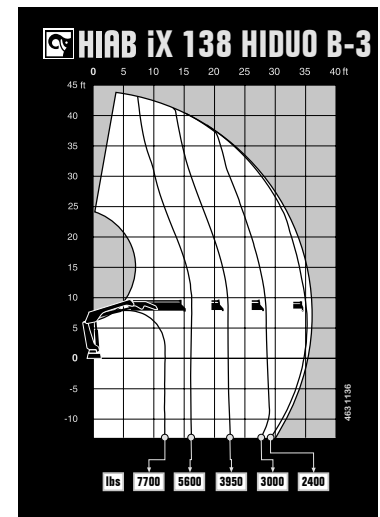
# HIAB iX.138 HIDUO

## TECHNICAL SPECIFICATIONS

Technical Data	IX.138 HiDuo B-2	IX.138 HiDuo B-3	IX.138 HiDuo E-4	IX.138 HiDuo E-5
<b>Lifting Capacity</b>				
Lifting capacity (ft-lb)	93 892	91 236	85 410	82 386
<b>Outreach</b>				
Standard Outreach (ft-lbs)	9' 2" - 8 378	11' 10" - 7 716	10' 2" - 8 378	10' 2" - 8 157
	15' 9" - 5 953	15' 9" - 5 732	15' 9" - 5 423	16' 1" - 5 115
	21' 8" - 4 277	21' 8" - 4 012	21' 8" - 3 704	22' - 3 439
	28' 3" - 3 263	28' 3" - 2 998	27' 11" - 2 734	28' 3" - 2 513
	-	35' 1" - 2 381	34' 9" - 2 139	35' 1" - 1 896
	-	-	41' 8" - 1 764	42' - 1 521
Outreach, hydraulic extensions (ft)	28' 11"	36' 1"	42'	49' 7"
<b>Oil and Tank</b>				
Rec OilFlow lo (gal/min)	12	12	12	12
Rec OilFlow hi (gal/min)	15	15	15	15
Work pressure (psi)	4 656	4 656	4 656	4 656
<b>Slewing</b>				
Slewing Torque (ft-lbs)	15 931	15 931	15 931	15 931
Slewing angle (degrees)	415	415	415	415
<b>Dimensions</b>				
Height in folded position (in)	7' 5"	7' 5"	7' 6"	7' 6"
Width in folded position (in)	8' 2"	8' 2"	8' 1"	8' 2"
<b>Weights</b>				
Weight of crane w/o stabilizers (lbs)	3 285	3 572	4 167	4 409
Additional weight of hose & pipe kit (lbs)	258	258	284	284
Weight of stabilizers (lbs)	844	844	844	844
<b>Installation Space</b>				
Installation space needed (in)	2' 9" - 5' 2"	3' 1" - 5' 2"	2' 9" - 5' 2"	3' 1" - 5' 6"

This table shows a few examples of models, and represents some of all options available. With the opportunity to configure your crane, we can provide you with a crane perfectly tailored to your needs. Please contact your local dealer for more information on the variety of options we can offer.

**Disclaimer.** We reserve the right to make changes. Illustrations, drawings and data are not always in accordance with the latest version or standard model in production. The models in the pictures may present special equipment or colors.



## BUILT TO PERFORM

Hiab is a leading provider of smart and sustainable load handling solutions. We are committed to delivering the best customer experience every day with the most engaged people and partners. Hiab's premium equipment includes HIAB, EFFER and ARGOS loader cranes, MOFFETT and PRINCETON truck mounted forklifts, LOGLIFT forestry cranes, JONSERED recycling cranes, MULTILIFT skiploaders and hooklifts, GALFAB roll-off cable hoists, and tail lifts under the ZEPRO, DEL and WALTCO brands. As the industry pioneer, Hiab continues to make load handling smarter, safer and more sustainable to build a better tomorrow. Hiab is part of Cargotec Corporation.

[www.hiab.com](http://www.hiab.com)

