

TECHNICAL SPECIFICATIONS

X-DUO 058



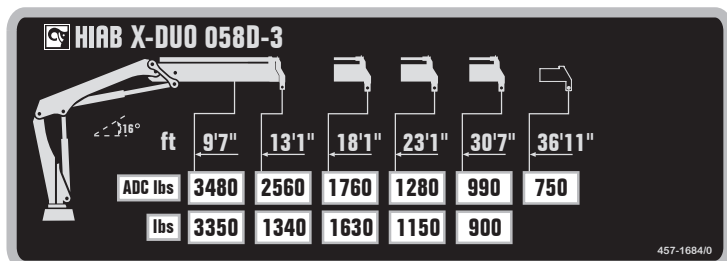
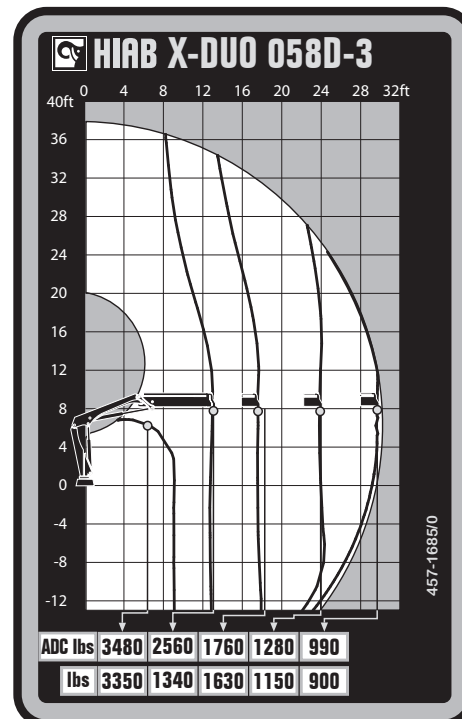
BUILT TO PERFORM



HIAB X-DUO 058

TECHNICAL SPECIFICATIONS

Technical Data	X-DUO 058 D1	X-DUO 058 D-2	X-DUO 058 D-3
Lifting capacity			
Lifting capacity (ft-lbs)	36 141	34 665	33 928
Outreach			
Standard outreach (ft-lbs)	7' 3" - 4 894	8' 2" - 4 189	9' 6" - 3 483
	12' 6" - 2 910	12' 10" - 2 734	13' 2" - 2 557
	17' 5" - 2 072	17' 9" - 1 896	18' 1" - 1 764
	-	23' 8" - 1 411	23' 11" - 1 279
	-	-	30' 6" - 860
Outreach, hydraulic extensions (ft)	16' 2"	21' 2"	30' 6"
Oil and tank			
Rec OilFlow lo (gal/min)	7	7	7
Rec OilFlow hi (gal/min)	8	8	8
Work pressure (psi)	3 481	3 481	3 481
Slewing			
Slewing torque (ft-lbs)	5 679	5 679	5 679
Slewing angle (degrees)	410	410	410
Dimensions			
Height in folded position (in)	6' 3"	6' 3"	6' 3"
Width in folded position (in)	6' 4"	6' 7"	7' 1"
Weights			
Weight of crane w/o stabilizers (lbs)	1 631	1 808	1 940
Additional weight of hose & pipe kit (lbs)	132	132	132
Weight of stabilizers (lbs)	353	353	353
Installation space			
Installation space needed (in)	2' 2" - 2' 5"	2' 2" - 2' 5"	2' 2" - 2' 5"



Disclaimer. This table shows a few examples of models, and represents some of all options available. With the opportunity to configure your crane, we can provide you with a crane perfectly tailored to your needs. Please contact your local Hiab sales representative for more information on the variety of options we can offer. We reserve the right to make changes. Illustrations, drawings and data are not always in accordance with the latest version or standard model in production. The models in the pictures may present special equipment or colors.

BUILT TO PERFORM

Hiab (Nasdaq Helsinki: HIAB) is a leading provider of smart and sustainable on road load-handling solutions, committed to delivering the best customer experience every day with the most engaged people and partners. Hiab's premium equipment includes HIAB and EFFER loader cranes, MOFFETT and PRINCETON truck mounted forklifts, MULTILIFT skiploaders and hooklifts, GALFAB roll-off cable hoists, and WALTCO tail lifts, and the service brand HIPERFORM, a comprehensive suite of smart solutions that help maximize the life-cycle value of Hiab's equipment. As the industry pioneer, Hiab continues to make on road load-handling smarter, safer and more sustainable to build a better tomorrow.

www.hiabgroup.com

