

TECHNICAL SPECIFICATIONS

eX.262



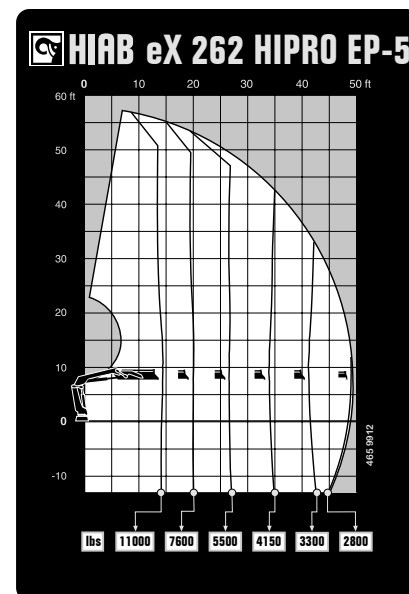
BUILT TO PERFORM



HIAB eX.262

TECHNICAL SPECIFICATIONS

Technical Data	eX.262 HiPro EP-5	eX.262 HiPro E-6	eX.262 HiPro E-6 / JIB 45X-3	eX.262 HiPro E-8
Lifting capacity				
Lifting capacity (ft-lbs)	161 010	154 593	154 593	147 660
Outreach				
Standard outreach (ft-lbs)	14' 9" - 10 913	8' 2" - 18 519	8' 2" - 18 519	7' 11" - 18 519
	20' 4" - 7 606	14' 10" - 10 472	14' 10" - 10 472	15' 5" - 9 590
	26' 11" - 5 468	20" - 7 275	20" - 7 275	20' 8" - 6 526
	34' 1" - 4 145	25' 11" - 5 203	25' 11" - 5 203	26' 7" - 4 542
	41' 8" - 3 307	32' 2" - 3 968	32' 2" - 3 968	32' 10" - 3 307
	49' 3" - 2 778	38' 9" - 3 087	38' 9" - 3 087	39' 4" - 2 469
	-	45' 7" - 2 557	45' 7" - 2 557	46' 3" - 1 940
	-	52' 10" - 2 161	52' 10" - 2 161	53' 6" - 1 543
JIB standard outreach (ft-lbs)	-	-	-	61' - 1 279
	-	-	-	68' 7" - 1 146
	-	-	-	-
	-	-	-	-
Outreach, hydraulic extensions (ft)	49' 6"	53' 1"	53' 1"	68' 10"
Oil and tank				
Rec OilFlow lo (gal/min)	24	24	24	24
Rec OilFlow hi (gal/min)	32	32	32	32
Work pressure (psi)	4 772	4 772	4 772	4 772
Slewing				
Slewing Torque (ft-lbs)	20 873	20 873	20 873	20 873
Slewing angle (degrees)	410	410	410	410
Dimensions				
Height in folded position (in)	7' 10"	7' 11"	8' 8"	7' 11"
Width in folded position (in)	8' 3"	8' 3"	8' 3"	8' 3"
Weights				
Weight of crane w/o stabilizers (lbs)	3 153	3 439	103 185	3 726
Weight of crane w/JIB (lbs)	-	-	8 642	-
Additional weight of hose & pipe kit (lbs)	179	331	331	212
Weight of stabilizers (lbs)	1 025	1 025	1 025	1 025
Installation Space				
Installation space needed (in)	3' 9" - 4'	3' 9" - 4'	4'	3' 11" - 4' 1"



Disclaimer. We reserve the right to make changes. Illustrations, drawings and data are not always in accordance with the latest version or standard model in production. The models in the pictures may present special equipment or colors.

BUILT TO PERFORM

Hiab is a leading provider of smart and sustainable load handling solutions. We are committed to delivering the best customer experience every day with the most engaged people and partners. Hiab's premium equipment includes HIAB, EFFER and ARGOS loader cranes, MOFFETT and PRINCETON truck mounted forklifts, LOGLIFT forestry cranes, JONSERED recycling cranes, MULTILIFT skiploaders and hooklifts, GALFAB roll-off cable hoists, and tail lifts under the ZEPRO, DEL and WALTCO brands. As the industry pioneer, Hiab continues to make load handling smarter, safer and more sustainable to build a better tomorrow.

Hiab is part of Cargotec Corporation.

www.hiab.com

