

TECHNICAL SPECIFICATIONS
eX.302



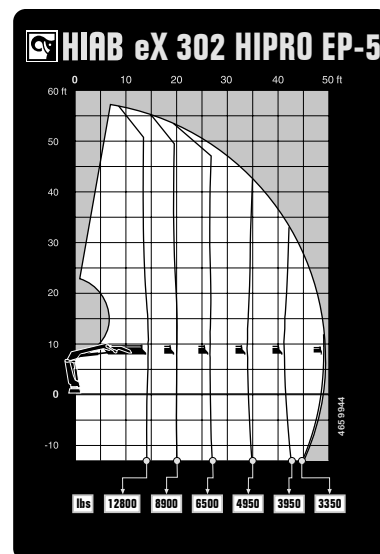
BUILT TO PERFORM



HIAB eX.302

TECHNICAL SPECIFICATIONS

Technical Data	eX.302 HiPro EP-5	eX.302 HiPro E-6	eX.302 HiPro E-6 / JIB 45X-3	eX.302 HiPro E-8
Lifting capacity				
Lifting capacity (ft-lbs)	187 710	180 924	180 924	174 286
Outreach				
Standard outreach (ft-lbs)	14' 9" - 12 787	8' 6" - 20 724	8' 6" - 20 724	8' 2" - 20 283
	20' 4" - 8 929	14' 9" - 12 125	14' 9" - 12 125	15' 5" - 11 244
	26' 11" - 6 482	20' - 8 598	20' - 8 598	20' 8" - 7 826
	34' 1" - 4 938	25' 11" - 6 261	25' 11" - 6 261	26' 7" - 5 600
	41' 8" - 3 968	32' 2" - 4 806	32' 2" - 4 806	32' 10" - 4 145
	49' 3" - 3 351	38' 9" - 3 836	38' 9" - 3 836	39' 4" - 3 219
	-	45' 7" - 3 131	45' 7" - 3 131	46' 3" - 2 557
	-	52' 10" - 2 690	52' 10" - 2 690	53' 6" - 2 072
	-	-	-	61' - 1 764
	-	-	-	68' 7" - 1 543
JIB standard outreach (ft-lbs)	-	-	63' - 1 191	-
	-	-	68' 3" - 1 058	-
	-	-	74' 6" - 948	-
	-	-	80' 9" - 860	-
Outreach, hydraulic extensions (ft)	49' 6"	53' 1"	53' 1"	68' 10"
Oil and tank				
Rec OilFlow lo (gal/min)	24	24	24	24
Rec OilFlow hi (gal/min)	32	32	32	32
Work pressure (psi)	4 859	4 859	4 859	4 859
Slewing				
Slewing Torque (ft-lbs)	25 077	25 077	25 077	25 077
Slewing angle (degrees)	420	420	420	420
Dimensions				
Height in folded position (in)	7' 10"	7' 11"	8' 8"	7' 11"
Width in folded position (in)	8' 3"	8' 3"	8' 3"	8' 3"
Weights				
Weight of crane w/o stabilizers (lbs)	7 077	7 672	7 672	8 267
Weight of crane w/JIB (lbs)	-	-	8 863	-
Additional weight of hose & pipe kit (lbs)	179	331	331	212
Weight of stabilizers (lbs)	1 025	1 025	1 025	1 025
Installation Space				
Installation space needed (in)	3' 9" - 4'	3' 9" - 4'	4'	3' 11" - 4'



Disclaimer. We reserve the right to make changes. Illustrations, drawings and data are not always in accordance with the latest version or standard model in production. The models in the pictures may present special equipment or colors.

BUILT TO PERFORM

Hiab is a leading provider of smart and sustainable load handling solutions. We are committed to delivering the best customer experience every day with the most engaged people and partners. Hiab's premium equipment includes HIAB, EFFER and ARGOS loader cranes, MOFFETT and PRINCETON truck mounted forklifts, LOGLIFT forestry cranes, JONSERED recycling cranes, MULTILIFT skiploaders and hooklifts, GALFAB roll-off cable hoists, and tail lifts under the ZEPRO, DEL and WALTCO brands. As the industry pioneer, Hiab continues to make load handling smarter, safer and more sustainable to build a better tomorrow.

Hiab is part of Cargotec Corporation.

www.hiab.com

