

TECHNICAL SPECIFICATIONS
ix.148 DUO



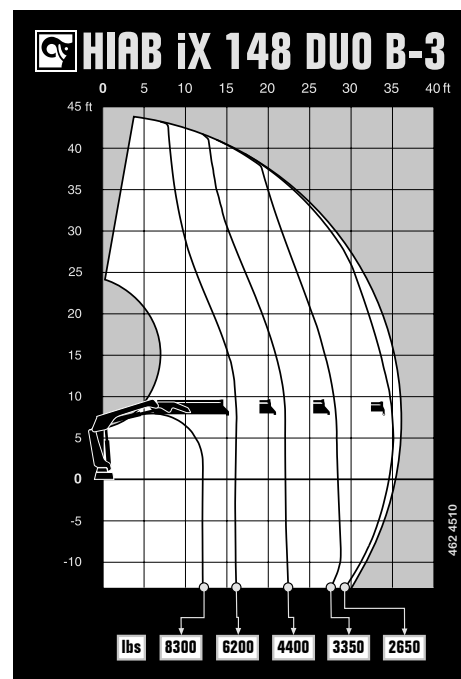
BUILT TO PERFORM



HIAB iX.148

TECHNICAL SPECIFICATIONS

Technical Data	iX.148 Duo B-1	iX.148 Duo B-2	iX.148 Duo B-3
Lifting capacity			
Lifting capacity (ft-lbs)	106 873	103 185	100 382
Outreach			
Standard outreach (ft-lbs)	10' 2" - 10 362	11' 2" - 9 259	12' 2" - 8 267
	15' 5" - 6 945	15' 5" - 6 614	15' 9" - 6 283
	21' 4" - 5 027	21' 4" - 4 718	21' 8" - 4 409
	-	27' 11" - 3 616	27' 11" - 3 351
Outreach, hydraulic extensions (ft)	22' 3"	28' 11"	36' 1"
Oil and tank			
Rec OilFlow lo (gal/min)	9	9	9
Rec OilFlow hi (gal/min)	11	11	11
Work pressure (psi)	4 351	4 351	4 351
Slewing			
Slewing Torque (ft-lbs)	15 931	15 931	15 931
Slewing angle (degrees)	415	415	415
Dimensions			
Height in folded position (in)	7' 5"	7' 5"	7' 5"
Width in folded position (in)	8' 1"	8' 1"	8' 2"
Weights			
Weight of crane w/o stabilizers (lbs)	3 153	3 439	3 726
Additional weight of hose & pipe kit (lbs)	269	269	269
Weight of stabilizers (lbs)	844	844	844
Installation Space			
Installation space needed (in)	2' 9" - 3' 6"	2' 9" - 3' 6"	3' 1" - 3' 6"



Disclaimer. We reserve the right to make changes. Illustrations, drawings and data are not always in accordance with the latest version or standard model in production. The models in the pictures may present special equipment or colors.

BUILT TO PERFORM

Hiab is a leading provider of smart and sustainable load handling solutions. We are committed to delivering the best customer experience every day with the most engaged people and partners. Hiab's premium equipment includes HIAB, EFFER and ARGOS loader cranes, MOFFETT and PRINCETON truck mounted forklifts, LOGLIFT forestry cranes, JONSERED recycling cranes, MULTILIFT skiploaders and hooklifts, GALFAB roll-off cable hoists, and tail lifts under the ZEPRO, DEL and WALTCO brands. As the industry pioneer, Hiab continues to make load handling smarter, safer and more sustainable to build a better tomorrow.

Hiab is part of Cargotec Corporation.

www.hiab.com

