

TECHNICAL SPECIFICATIONS

X-HIDUO 082



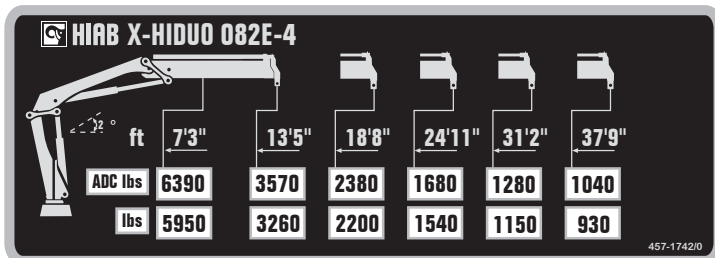
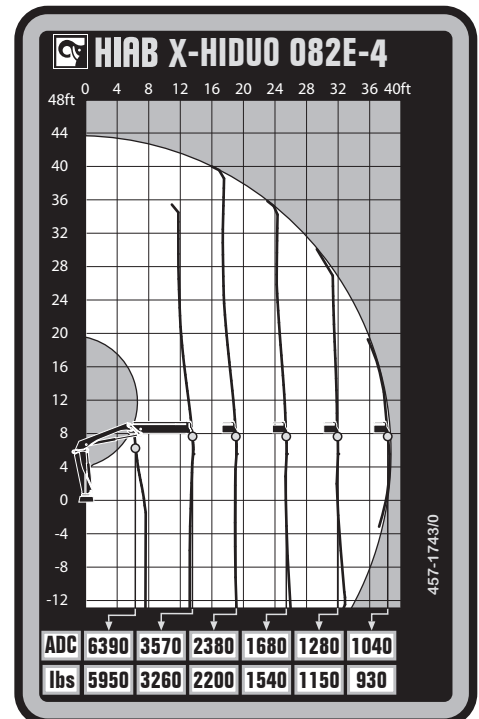
BUILT TO PERFORM



HIAB X-HIDUO 082

TECHNICAL SPECIFICATIONS

Technical Data	X-HIDUO 082 B-1	X-HIDUO 082 B-2	X-HIDUO 082 B-3	X-HIDUO 082 E-4
Lifting capacity				
Lifting capacity (ft-lbs)	54 580	52 367	50 154	47 942
Outreach				
Standard outreach (ft-lbs)	8' 6" - 6 283	9' 2" - 5 732	9' 6" - 5 291	7' 3" - 6 393
	12' 6" - 4 365	12' 6" - 4 189	12' 6" - 4 012	13' 5" - 3 572
	17' 9" - 3 087	17' 9" - 2 910	17' 9" - 2 734	18' 8" - 2 381
	-	23' 8" - 2 161	23' 11" - 1 940	24' 11" - 1 675
	-	-	30' 2" - 1 543	31' 2" - 1 279
Outreach, hydraulic extensions (ft)	18' 8"	24' 11"	31' 6"	38' 1"
Oil and tank				
Rec OilFlow lo (gal/min)	11	11	11	11
Rec OilFlow hi (gal/min)	15	15	15	15
Work pressure (psi)	4 395	4 395	4 395	4 395
Slewing				
Slewing torque (ft-lbs)	7 892	7 892	7 892	7 892
Slewing angle (degrees)	406	406	406	406
Dimensions				
Height in folded position (in)	6' 3"	6' 3"	6' 3"	6' 3"
Width in folded position (in)	6' 11"	7' 2"	7' 2"	7' 8"
Weights				
Weight of crane w/o stabilizers (lbs)	1 929	2 139	2 337	2 513
Additional weight of hose & pipe kit (lbs)	143	143	143	165
Weight of stabilizers (lbs)	668	668	668	668
Installation space				
Installation space needed (in)	2' 6" - 2' 7"	2' 6" - 2' 7"	2' 6" - 2' 10"	2' 6" - 2' 9"



Disclaimer. This table shows a few examples of models, and represents some of all options available. With the opportunity to configure your crane, we can provide you with a crane perfectly tailored to your needs. Please contact your local Hiab sales representative for more information on the variety of options we can offer. We reserve the right to make changes. Illustrations, drawings and data are not always in accordance with the latest version or standard model in production. The models in the pictures may present special equipment or colors.

BUILT TO PERFORM

Hiab (Nasdaq Helsinki: HIAB) is a leading provider of smart and sustainable on road load-handling solutions, committed to delivering the best customer experience every day with the most engaged people and partners. Hiab's premium equipment includes HIAB and EFFER loader cranes, MOFFETT and PRINCETON truck mounted forklifts, MULTILIFT skiploaders and hooklifts, GALFAB roll-off cable hoists, and WALTCO tail lifts, and the service brand HIPERFORM, a comprehensive suite of smart solutions that help maximize the life-cycle value of Hiab's equipment. As the industry pioneer, Hiab continues to make on road load-handling smarter, safer and more sustainable to build a better tomorrow.

www.hiabgroup.com

