

TECHNICAL SPECIFICATIONS
ix.298 HIDUO



BUILT TO PERFORM



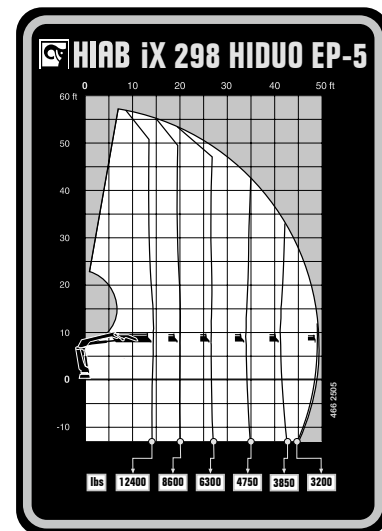
HIAB iX.298 HIDUO

TECHNICAL SPECIFICATIONS

Technical Data	IX.298 HIDUO EP-3	IX.298 HIDUO EP-5	IX.298 HIDUO E-6	IX.298 HIDUO E-8
Lifting capacity				
Lifting capacity (ft-lbs)	188 373	181 662	174 876	168 238
Outreach				
Standard outreach (ft-lbs)	-	-	8' 2" - 20 723	8' 2" - 20 062
	14' 1" - 13 448	14' 9" - 12 346	14' 9" - 11 684	15' 5" - 10 913
	19' 8" - 9 480	20' 4" - 8 598	20' - 8 267	20' 8" - 7 496
	26' 3" - 6 945	26' 11" - 6 261	25' 11" - 6 041	26' 7" - 5 335
	33' 6" - 5 467	34' 1" - 4 762	32' 2" - 4 586	32' 10" - 3 968
	-	41' 8" - 3 836	38' 9" - 3 660	39' 4" - 3 042
	-	49' 2" - 3 219	45' 7" - 2 998	46' 3" - 2 381
	-	-	52' 10" - 2 557	53' 6" - 1 984
	-	-	-	61' - 1 675
	-	-	-	68' 7" - 1 455
Outreach, hydraulic extensions (ft)	33' 9"	49' 5"	53' 1"	68' 10"
Oil and tank				
Rec OilFlow lo (gal/min)	18	18	18	18
Rec OilFlow hi (gal/min)	24	24	24	24
Work pressure (psi)	4 728	4 728	4 728	4 728
Slewing				
Slewing Torque (ft-lbs)	25 077	25 077	25 077	25 077
Slewing angle (degrees)	420	420	420	420
Dimensions				
Height in folded position (in)	7' 10"	7' 10"	7' 10"	7' 10"
Width in folded position (in)	8' 2"	8' 2"	8' 3"	8' 3"
Weights				
Weight of crane w/o stabilizers (lbs)	6 261	6 945	7 540	8 157
Additional weight of hose & pipe kit (lbs)	145	179	331	212
Weight of stabilizers (lbs)	1 025	1 025	1 025	1 025
Installation Space				
Installation space needed (in)	3' 8" - 4'	3' 9" - 4'	3' 10" - 4' 1"	3' 11" - 4'

This table shows a few examples of models, and represents some of all options available. With the opportunity to configure your crane, we can provide you with a crane perfectly tailored to your needs. Please contact your local dealer for more information on the variety of options we can offer.

Disclaimer. We reserve the right to make changes. Illustrations, drawings and data are not always in accordance with the latest version or standard model in production. The models in the pictures may present special equipment or colours.



BUILT TO PERFORM

Hiab is a leading provider of smart and sustainable load handling solutions. We are committed to delivering the best customer experience every day with the most engaged people and partners. Hiab's premium equipment includes HIAB, EFFER and ARGOS loader cranes, MOFFETT and PRINCETON truck mounted forklifts, LOGLIFT forestry cranes, JONSERED recycling cranes, MULTILIFT skiploaders and hooklifts, GALFAB roll-off cable hoists, and tail lifts under the ZEPRO, DEL and WALTICO brands. As the industry pioneer, Hiab continues to make load handling smarter, safer and more sustainable to build a better tomorrow. Hiab is part of Cargotec Corporation.

www.hiab.com

BD-IX.298HIDUO-EN-WW_240402 MET25-1855B

