

TECHNICAL SPECIFICATIONS
ix.188 HIDUO



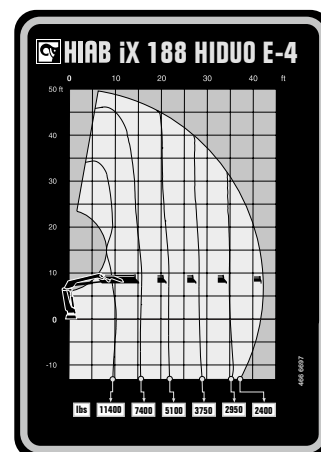
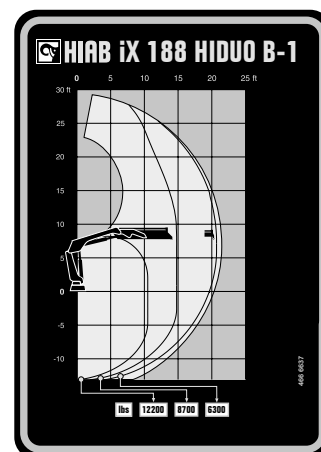
BUILT TO PERFORM



HIAB iX.188 HIDUO

TECHNICAL SPECIFICATIONS

Technical Data	IX.188 HIDUO B-1	IX.188 HIDUO B-2	IX.188 HIDUO B-3.3	IX.188 HIDUO E-4	IX.188 HIDUO E-5	IX.188 HIDUO E-6
Lifting capacity						
Lifting capacity (ft-lbs)	129 737	124 648	121 181	116 609	113 953	111 593
Outreach						
Standard outreach (ft-lbs)	10' 6" - 12 125	10' 6" - 11 905	11' 2" - 10 803	10' 2" - 11 464	10' 6" - 10 803	10' 10" - 10 251
	14' 9" - 8 708	15' 1" - 8 267	15' 1" - 7 937	15' 9" - 7 385	16' 1" - 7 055	16' 5" - 6 724
	20' 8" - 6 283	21' - 5 842	21' - 5 512	21' 8" - 5 115	22' - 4 806	22' 4" - 4 497
	-	27' 7" - 4 453	27' 7" - 4 101	28' 3" - 3 748	28' 6" - 3 439	28' 10" - 3 175
	-	-	34' 1" - 3 307	34' 9" - 2 954	35' 1" - 2 645	35' 5" - 2 381
	-	-	-	41' 8" - 2 425	42' - 2 138	42' 4" - 1 874
	-	-	-	-	49' 2" - 1 786	49' 6" - 1 543
	-	-	-	-	-	57' 1" - 1 301
Outreach, hydraulic extensions (ft)	21' 5"	28' 4"	35' 4"	42' 2"	49' 8"	57' 6"
Oil and tank						
Rec OilFlow lo (gal/min)	14	14	14	14	14	14
Rec OilFlow hi (gal/min)	17	17	17	17	17	17
Work pressure (psi)	4 772	4 772	4 772	4 772	4 772	4 772
Slewing						
Slewing Torque (ft-lbs)	20 873	20 873	20 873	20 873	20 873	20 873
Slewing angle (degrees)	415	415	415	415	415	415
Dimensions						
Height in folded position (in)	7' 5"	7' 5"	7' 5"	7' 5"	7' 5"	7' 5"
Width in folded position (in)	8' 2"	8' 2"	8' 2"	8' 2"	8' 2"	8' 2"
Weights						
Weight of crane w/o stabilizers (lbs)	3 693	4 023	4 398	4 971	5 280	5 545
Additional weight of hose & pipe kit (lbs)	183	183	231	258	289	258
Weight of stabilizers (lbs)	944	944	944	944	944	944
Installation Space						
Installation space needed (in)	2' 10" - 3' 4"	3' 2" - 3' 9"	3' 1" - 3' 4"	2' 10" - 3' 5"	3' 2" - 3' 5"	3' 2" - 3' 3"



This table shows a few examples of models, and represents some of all options available. With the opportunity to configure your crane, we can provide you with a crane perfectly tailored to your needs. Please contact your local dealer for more information on the variety of options we can offer.

Disclaimer. We reserve the right to make changes. Illustrations, drawings and data are not always in accordance with the latest version or standard model in production. The models in the pictures may present special equipment or colours.

BUILT TO PERFORM

Hiab is a leading provider of smart and sustainable load handling solutions. We are committed to delivering the best customer experience every day with the most engaged people and partners. Hiab's premium equipment includes HIAB, EFFER and ARGOS loader cranes, MOFFETT and PRINCETON truck mounted forklifts, LOGLIFT forestry cranes, JONSERED recycling cranes, MULTILIFT skiploaders and hooklifts, GALFAB roll-off cable hoists, and tail lifts under the ZEPRO, DEL and WALTCO brands. As the industry pioneer, Hiab continues to make load handling smarter, safer and more sustainable to build a better tomorrow. Hiab is part of Cargotec Corporation.

www.hiab.com

BD-IX.188HIDUO-EN-WW_240704 MET25-1855B

