

**TECHNICAL SPECIFICATIONS**  
**X-DUO 248**



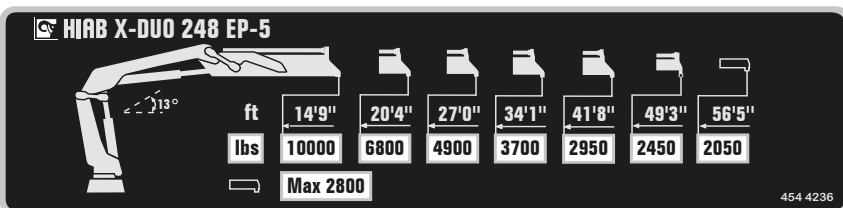
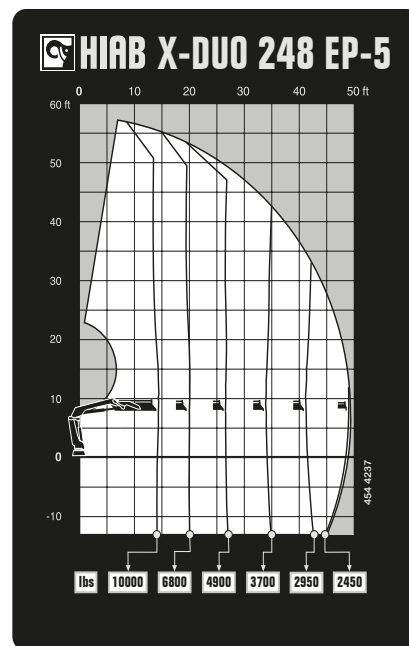
**BUILT TO PERFORM**



# HIAB X-DUO 248

## TECHNICAL SPECIFICATIONS

Technical Data	X-DUO 248 EP-2	X-DUO 248 EP-3	X-DUO 248 EP-4	X-DUO 248 EP-5
<b>Lifting capacity</b>				
Lifting capacity (ft-lbs)	157 912	153 634	149 873	146 775
<b>Outreach</b>				
Standard outreach (ft-lbs)	13' 9" - 11 464	14' 1" - 10 913	14' 5" - 10 362	14' 9" - 9 921
	19' 4" - 8 157	19' 8" - 7 606	20' - 7 165	20' 4" - 6 834
	25' 11" - 6 085	26' 3" - 5 600	26' 7" - 5 247	26' 11" - 4 894
	-	33' 6" - 4 365	33' 10" - 4 012	34' 1" - 3 704
	-	-	41' 4" - 3 219	41' 8" - 2 954
Outreach, hydraulic extensions (ft)	26' 3"	33' 9"	41' 7"	49' 6"
<b>Oil and tank</b>				
Rec OilFlow lo (gal/min)	13	13	13	13
Rec OilFlow hi (gal/min)	19	19	19	19
Work pressure (psi)	4 424	4 424	4 424	4 424
<b>Slewing</b>				
Slewing torque (ft-lbs)	20 873	20 873	20 873	20 873
Slewing angle (degrees)	410	410	410	410
<b>Dimensions</b>				
Height in folded position (in)	7' 10"	7' 10"	7' 10"	7' 10"
Width in folded position (in)	8' 2"	8' 2"	8' 2"	8' 2"
<b>Weights</b>				
Weight of crane w/o stabilizers (lbs)	5 335	5 776	6 151	6 460
Additional weight of hose & pipe kit (lbs)	146	146	176	179
Weight of stabilizers (lbs)	1 025	1 025	1 025	1 025
<b>Installation space</b>				
Installation space needed (in)	3' 6" - 4'	3' 8" - 4'	3' 9" - 4'	3' 9" - 4'



*Disclaimer. This table shows a few examples of models, and represents some of all options available. With the opportunity to configure your crane, we can provide you with a crane perfectly tailored to your needs. Please contact your local Hiab sales representative for more information on the variety of options we can offer. We reserve the right to make changes. Illustrations, drawings and data are not always in accordance with the latest version or standard model in production. The models in the pictures may present special equipment or colors.*

## BUILT TO PERFORM

Hiab (Nasdaq Helsinki: HIAB) is a leading provider of smart and sustainable on road load-handling solutions, committed to delivering the best customer experience every day with the most engaged people and partners. Hiab's premium equipment includes HIAB and EFFER loader cranes, MOFFETT and PRINCETON truck mounted forklifts, MULTILIFT skiploaders and hooklifts, GALFAB roll-off cable hoists, and WALTCO tail lifts, and the service brand HIPERFORM, a comprehensive suite of smart solutions that help maximize the life-cycle value of Hiab's equipment. As the industry pioneer, Hiab continues to make on road load-handling smarter, safer and more sustainable to build a better tomorrow.

[www.hiabgroup.com](http://www.hiabgroup.com)

