

TECHNICAL SPECIFICATIONS
eX.192 HIPRO



BUILT TO PERFORM



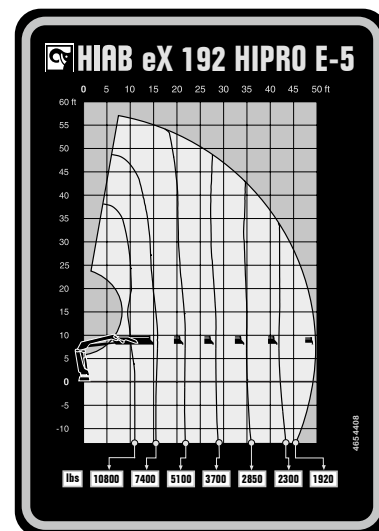
HIAB eX.192 HIPRO

TECHNICAL SPECIFICATIONS

Technical Data	eX.192 HiPro ES-2	eX.192 HiPro E-3.3	eX.192 HiPro E-5	eX.192 HiPro E-6
Lifting capacity				
Lifting capacity (ft-lbs)	130 917	157 838	120 370	118 010
Outreach				
Standard outreach (ft-lbs)	10' 2" - 12 787	10' 10" - 11 684	11' 2" - 10 803	12' - 10 583
	14' 5" - 9 039	15' 9" - 8 047	16' 1" - 7 385	16' 5" - 7 055
	20' 4" - 6 393	21' 8" - 5 622	22' - 5 115	22' 4" - 4 806
	26' 11" - 4 806	28' 3" - 4 233	28' 6" - 3 660	28' 10" - 3 395
	-	34' 9" - 3 395	35' 1" - 2 866	35' 5" - 2 601
	-	-	42' - 2 293	42' 4" - 2 050
	-	-	49' 2" - 1 940	49' 6" - 1 675
Outreach, hydraulic extensions (ft)	27' 4"	35' 3"	49' 9"	57' 6"
Oil and tank				
Rec OilFlow lo (gal/min)	18	18	18	18
Rec OilFlow hi (gal/min)	32	32	32	32
Work pressure (psi)	5 004	5 004	5 004	5 004
Slewing				
Slewing Torque (ft-lbs)	20 873	20 873	20 873	20 873
Slewing angle (degrees)	415	415	415	415
Dimensions				
Height in folded position (in)	7' 5"	7' 5"	7' 5"	7' 5"
Width in folded position (in)	8' 2"	8' 2"	8' 2"	8' 2"
Weights				
Weight of crane w/o stabilizers (lbs)	4 266	4 619	5 236	5 500
Additional weight of hose & pipe kit (lbs)	187	236	293	262
Weight of stabilizers (lbs)	944	944	944	944
Installation Space				
Installation space needed (in)	2' 10" - 5' 4"	3' 2" - 5' 4"	3' 2" - 5' 4"	3' 2" - 5' 2"

This table shows a few examples of models, and represents some of all options available. With the opportunity to configure your crane, we can provide you with a crane perfectly tailored to your needs. Please contact your local dealer for more information on the variety of options we can offer.

Disclaimer. We reserve the right to make changes. Illustrations, drawings and data are not always in accordance with the latest version or standard model in production. The models in the pictures may present special equipment or colours.



BUILT TO PERFORM

Hiab is a leading provider of smart and sustainable load handling solutions. We are committed to delivering the best customer experience every day with the most engaged people and partners. Hiab's premium equipment includes HIAB, EFFER and ARGOS loader cranes, MOFFETT and PRINCETON truck mounted forklifts, LOGLIFT forestry cranes, JONSERED recycling cranes, MULTILIFT skiploaders and hooklifts, GALFAB roll-off cable hoists, and tail lifts under the ZEPRO, DEL and WALTCO brands. As the industry pioneer, Hiab continues to make load handling smarter, safer and more sustainable to build a better tomorrow. Hiab is part of Cargotec Corporation.

www.hiab.com

BD-eX.192HIPRO-EN-WW_240704 MET25-1855B

