

TECHNICAL SPECIFICATIONS

X-HIPRO 122



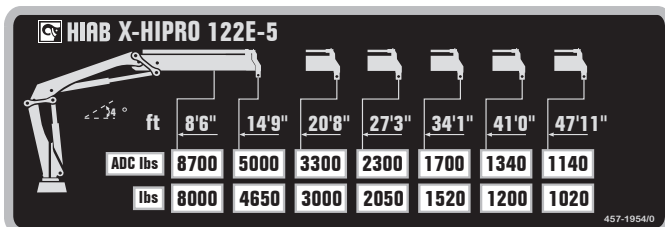
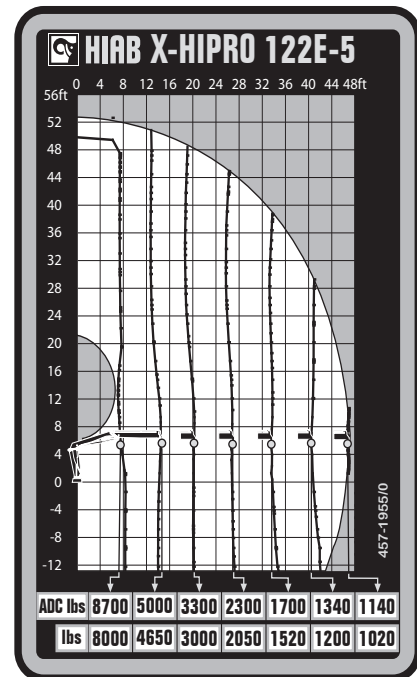
BUILT TO PERFORM



HIAB X-HIPRO 122

TECHNICAL SPECIFICATIONS

Technical Data	X-HIPRO 122 E-2	X-HIPRO 122 E-3	X-HIPRO 122 E-4	X-HIPRO 122 E-5
Lifting capacity				
Lifting capacity (ft-lbs)	82 017	79 362	76 707	74 715
Outreach				
Standard outreach (ft-lbs)	7' 7" - 10 582	7' 11" - 9 921	8' 2" - 9 370	8' 6" - 8 708
	13' 9" - 5 953	14' 1" - 5 644	14' 5" - 5 291	14' 9" - 5 027
	19' 9" - 4 101	20' - 3 792	20' 4" - 3 527	20' 8" - 3 307
	26' 3" - 3 042	26' 7" - 2 778	26' 11" - 2 513	27' 3" - 2 293
	-	33' 6" - 2 161	33' 10" - 1 940	34' 1" - 1 720
	-	-	40' 9" - 1 587	41' - 1 367
Outreach, hydraulic extensions (ft)	26' 4"	33' 6"	40' 9"	48'
Oil and tank				
Rec OilFlow lo (gal/min)	19	19	19	19
Rec OilFlow hi (gal/min)	21	21	21	21
Work pressure (psi)	5 221	5 221	5 221	5 221
Slewing				
Slewing torque (ft-lbs)	10 400	10 400	10 400	10 400
Slewing angle (degrees)	406	406	406	406
Dimensions				
Height in folded position (in)	7' 1"	7' 1"	7' 1"	7' 1"
Width in folded position (in)	7' 4"	7' 10"	7' 10"	8' 2"
Weights				
Weight of crane w/o stabilizers (lbs)	3 263	3 527	3 792	4 012
Additional weight of hose & pipe kit (lbs)	176	176	176	176
Weight of stabilizers (lbs)	668	668	668	668
Installation space				
Installation space needed (in)	2' 6" - 2' 8"	2' 7" - 2' 10"	2' 6" - 2' 8"	2' 8" - 2' 11"



Disclaimer. This table shows a few examples of models, and represents some of all options available. With the opportunity to configure your crane, we can provide you with a crane perfectly tailored to your needs. Please contact your local Hiab sales representative for more information on the variety of options we can offer. We reserve the right to make changes. Illustrations, drawings and data are not always in accordance with the latest version or standard model in production. The models in the pictures may present special equipment or colors.

BUILT TO PERFORM

Hiab (Nasdaq Helsinki: HIAB) is a leading provider of smart and sustainable on road load-handling solutions, committed to delivering the best customer experience every day with the most engaged people and partners. Hiab's premium equipment includes HIAB and EFFER loader cranes, MOFFETT and PRINCETON truck mounted forklifts, MULTILIFT skiploaders and hooklifts, GALFAB roll-off cable hoists, and WALTCO tail lifts, and the service brand HIPERFORM, a comprehensive suite of smart solutions that help maximize the life-cycle value of Hiab's equipment. As the industry pioneer, Hiab continues to make on road load-handling smarter, safer and more sustainable to build a better tomorrow.

www.hiabgroup.com

