

# Specification Sheet for DST2000 Range

Company Name: \_\_\_\_\_ Date: \_\_\_\_\_

Order Number: \_\_\_\_\_ Quantity required: \_\_\_\_\_

☐ Deliver Lift ☐ Collect Lift from Del Delivery Date Required: \_\_\_\_\_

## Do you have a forklift to unload?

☐ Yes ☐ No, require DEL to provide a Fork Lift

## Delivery Address:

Company Name: \_\_\_\_\_ Street Address: \_\_\_\_\_

Post Code: \_\_\_\_\_ City: \_\_\_\_\_

## Vehicle Details:

☐ Rigid ☐ Trailer Chassis Mass: \_\_\_\_\_

Manufacturer: \_\_\_\_\_ Model: \_\_\_\_\_ Year: \_\_\_\_\_

## Door Type:

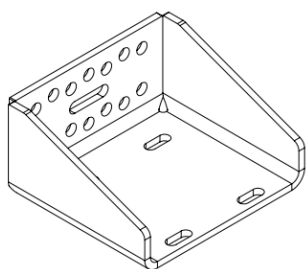
☐ Barn Doors ☐ Triple Barn Door ☐ Roller Shutter

## Suspension Type:

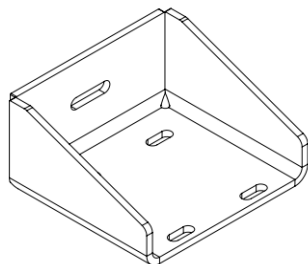
☐ Steel ☐ Air ☐ 24v

## Vehicle Voltage:

If Rigid, please select the Mounting Bracket required below:

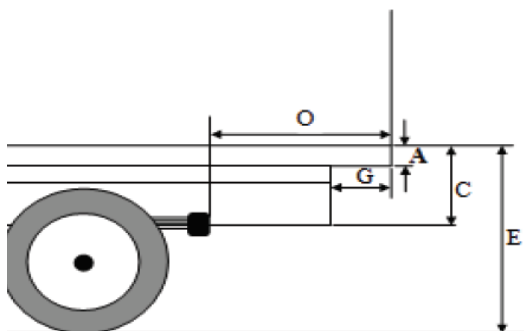


☐ Pre drilled Plates (suit MAN, Volvo & Scania chassis with 14mm holes & Mercedes chassis with 16mm holes **(holes need to be drilled out to 16.5mm)**  
**(Not available on Bed Heights exceeding 1420mm)**



☐ Blank Plates

Please fill in the geometrical data below:



Floor to bottom of frame – C (mm): \_\_\_\_\_

Lifting height unloaded – E (mm): \_\_\_\_\_

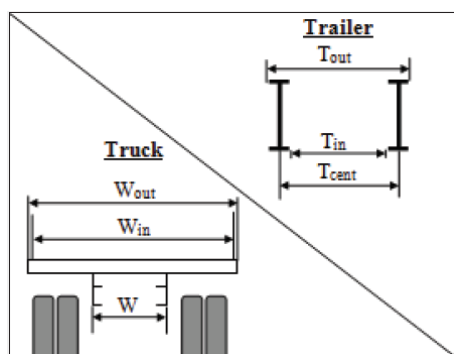
Overhang rear of springs – O (mm): \_\_\_\_\_

Height of rear sill – A (mm): \_\_\_\_\_

Rear of frame to rear of body – G (mm): \_\_\_\_\_

Width of body, external – W (mm): \_\_\_\_\_

Width of body, internal – W (mm): \_\_\_\_\_



If truck:

Specify chassis width – W (mm): \_\_\_\_\_

If trailer:

Specify C-C measurement of chassis I-beams – T (mm): \_\_\_\_\_

Specify inner measurement of chassis I-beams – T (mm): \_\_\_\_\_

Specify outer measurement of chassis I-beams – T (mm): \_\_\_\_\_

## Tail Lift Details

### Lift Capacity:

☐ 2000kg

### Platform Specification:

☐ 1200mm + 3 Way Folding Rear & Side Ramps (**Galvanised Steel**)

☐ 1300mm + 3 Way Folding Rear & Side Ramps (**Galvanised Steel**)

### External Control:

☐ Fixed External Control    ☐ Fixed External Control x 2    ☐ Fixed External Control + Two handed operation

### Internal Control:

☐ Slimline Control x 2

### Tail Lift Isolator:

☐ Cab Switch    ☐ Red Key Isolator    ☐ VDHH

### Cable Options:

☐ 35' Battery Cables (Standard)    ☐ 45' Battery Cables    ☐ 45' Trailer Wiring

### Fence Type:

☐ Pair of P-Gates

### Options:

☐ Stow Sensor (In / Out)    ☐ Stow Light Indicator

### Warranty options: (24 month Warranty as standard)

☐ 3 Year Warranty    ☐ 4 Year Warranty    ☐ 5 Year Warranty