

TECHNICAL SPECIFICATIONS

eX.232 HIPRO



BUILT TO PERFORM



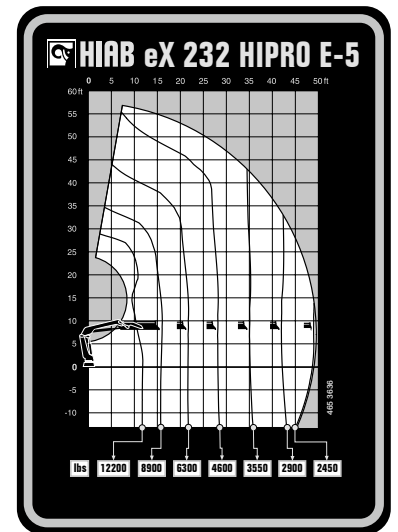
HIAB eX.232 HIPRO

TECHNICAL SPECIFICATIONS

Technical Data	eX.232 HiPro E-3	eX.232 HiPro E-4	eX.232 HiPro E-5	eX.232 HiPro E-6
Lifting capacity				
Lifting capacity (ft-lbs)	150 020	146 480	143 308	140 579
Outreach				
Standard outreach (ft-lbs)	11' 6" - 13 007	11' 6" - 12 787	11' 10" - 12 125	11' 10" - 11 905
	15' 5" - 9 700	15' 5" - 9 480	16' 1" - 8 929	16' 1" - 8 708
	21' 4" - 6 834	21' 4" - 6 614	21' 8" - 6 283	22' - 5 952
	27' 11" - 5 159	27' 11" - 4 894	28' 3" - 4 630	28' 3" - 4 409
	34' 5" - 4 145	34' 5" - 3 880	35' 1" - 3 571	34' 10" - 3 351
	-	41' 4" - 3 219	42' - 2 910	41' 8" - 2 690
	-	-	49' 2" - 2 469	48' 11" - 2 249
Outreach, hydraulic extensions (ft)	34' 11"	41' 10"	49' 6"	56' 10"
Oil and tank				
Rec OilFlow lo (gal/min)	24	24	24	24
Rec OilFlow hi (gal/min)	32	32	32	32
Work pressure (psi)	4 960	4 960	4 960	4 960
Slewing				
Slewing Torque (ft-lbs)	20 873	20 873	20 873	20 873
Slewing angle (degrees)	415	415	415	415
Dimensions				
Height in folded position (in)	7' 5"	7' 5"	7' 5"	7' 5"
Width in folded position (in)	4' 1"	4' 1"	4' 1"	4' 1"
Weights				
Weight of crane w/o stabilizers (lbs)	4 817	5 126	5 390	5 677
Additional weight of hose & pipe kit (lbs)	159	234	236	234
Weight of stabilizers (lbs)	944	944	944	944
Installation Space				
Installation space needed (in)	2' 10" - 5' 4"	2' 10" - 5' 4"	3' 3" - 5' 5"	3' 3" - 5' 3"

This table shows a few examples of models, and represents some of all options available. With the opportunity to configure your crane, we can provide you with a crane perfectly tailored to your needs. Please contact your local dealer for more information on the variety of options we can offer.

Disclaimer. We reserve the right to make changes. Illustrations, drawings and data are not always in accordance with the latest version or standard model in production. The models in the pictures may present special equipment or colours.



BUILT TO PERFORM

Hiab is a leading provider of smart and sustainable load handling solutions. We are committed to delivering the best customer experience every day with the most engaged people and partners. Hiab's premium equipment includes HIAB, EFFER and ARGOS loader cranes, MOFFETT and PRINCETON truck mounted forklifts, LOGLIFT forestry cranes, JONSERED recycling cranes, MULTILIFT skiploaders and hooklifts, GALFAB roll-off cable hoists, and tail lifts under the ZEPRO, DEL and WALTCO brands. As the industry pioneer, Hiab continues to make load handling smarter, safer and more sustainable to build a better tomorrow. Hiab is part of Cargotec Corporation.

www.hiab.com

BD-eX.232HIPRO-EN-WW_240704 MET25-1855B

