

TECHNICAL SPECIFICATIONS

X-HIDUO 046



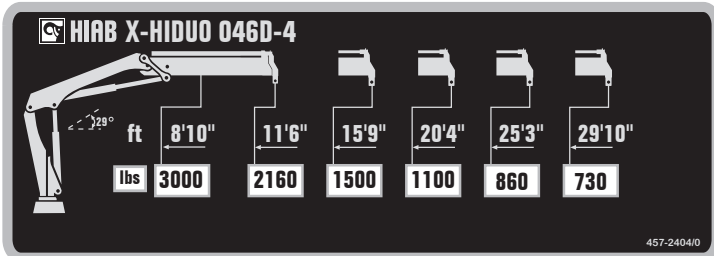
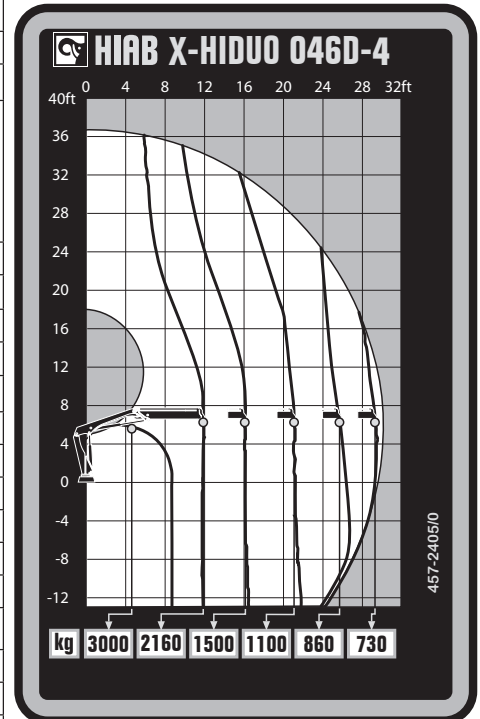
BUILT TO PERFORM



HIAB X-HIDUO 046

TECHNICAL SPECIFICATIONS

Technical Data	X-HIDUO 046 B-1	X-HIDUO 046 B-2	X-HIDUO 046 D-3	X-HIDUO 046 D-4
Lifting capacity				
Lifting capacity (ft-lbs)	26 626	25 003	27 290	26 626
Outreach				
Standard outreach (ft-lbs)	7' 3" - 3 792	7' 3" - 3 704	7' 3" - 3 792	8' 10" - 2 998
	11' 2" - 2 381	11' 2" - 2 249	11' 6" - 2 293	11' 6" - 2 161
	15' 5" - 1 720	15' 5" - 1 587	15' 9" - 1 631	15' 9" - 1 499
	-	20' - 1 191	20' 4" - 1 235	20' 4" - 1 102
	-	-	25' 3" - 970	25' 3" - 860
Outreach, hydraulic extensions (ft)	16' 2"	21' 2"	25' 9"	30' 10"
Oil and tank				
Rec OilFlow lo (gal/min)	3	3	3	3
Rec OilFlow hi (gal/min)	4	4	4	4
Work pressure (psi)	3 118	3 118	3 481	3 481
Slewing				
Slewing torque (ft-lbs)	3 540	3 540	3 540	3 540
Slewing angle (degrees)	380	380	380	380
Dimensions				
Height in folded position (in)	5' 3"	5' 3"	5' 3"	5' 3"
Width in folded position (in)	6' 2"	6' 3"	6' 2"	6' 2"
Weights				
Weight of crane w/o stabilizers (lbs)	992	1 102	1 191	1 268
Additional weight of hose & pipe kit (lbs)	66	77	-	-
Weight of stabilizers (lbs)	-	-	-	-
Installation space				
Installation space needed (in)	1' 9"	1' 9"	1' 11"	2'



Disclaimer. This table shows a few examples of models, and represents some of all options available. With the opportunity to configure your crane, we can provide you with a crane perfectly tailored to your needs. Please contact your local Hiab sales representative for more information on the variety of options we can offer. We reserve the right to make changes. Illustrations, drawings and data are not always in accordance with the latest version or standard model in production. The models in the pictures may present special equipment or colors.

BUILT TO PERFORM

Hiab (Nasdaq Helsinki: HIAB) is a leading provider of smart and sustainable on road load-handling solutions, committed to delivering the best customer experience every day with the most engaged people and partners. Hiab's premium equipment includes HIAB and EFFER loader cranes, MOFFETT and PRINCETON truck mounted forklifts, MULTILIFT skiploaders and hooklifts, GALFAB roll-off cable hoists, and WALTCO tail lifts, and the service brand HIPERFORM, a comprehensive suite of smart solutions that help maximize the life-cycle value of Hiab's equipment. As the industry pioneer, Hiab continues to make on road load-handling smarter, safer and more sustainable to build a better tomorrow.

www.hiabgroup.com

