



HIAB X-HIPRO 408
BUILT STRONG, MADE SMART

ELEVATE YOUR CONTROL AND PRECISION FOR EVERY LIFT



Heavy lifting is more than just raw power – it's about precision, speed, and complete control.

The HIAB X-HiPro 408 combines rugged design with smart technology. It's built to perform, built to last, and built to help you get the job done right, every time.

This is a remote-controlled CE-marked loader crane (non-CE version also available) with 38 tonne-metre capacity and a maximum outreach of 22.5 metres (extendable with JIB).

At the heart of this high-performance crane is SPACEevo – the brain inside the HiPro control system. It enhances productivity, safety, and efficiency through intuitive controls, advanced sensor-based safety systems, and optimized energy use. Its open modular

platform also ensures the system is future-proof, enabling new updates and technologies.

This solution turns the crane into a finely tuned instrument, letting you work smoothly and confidently in the toughest conditions – from tight urban spaces to complex trench plate lifts.

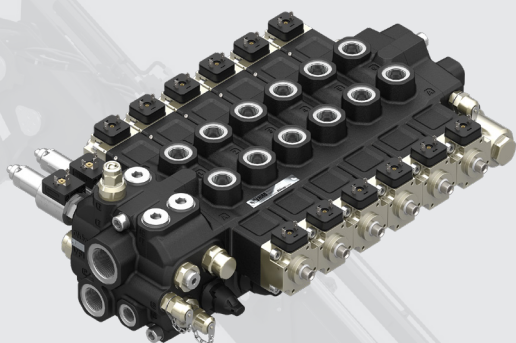
More than just a machine, the HIAB X-HiPro 408 is a dependable partner that's built for professionals tackling demanding tasks every day. Perfect for applications in logistics, construction, transportation, equipment rental, and beyond, it's the smart choice for any business that demands reliable heavy lifting.

ENGINEERED TO PERFORM

OLSBERGS V200 HYDRAULIC CONTROL VALVES

Olsbergs hydraulic control valves are designed specifically for loader cranes – and have been developed for that purpose for over 40 years.

Unique to the Olsbergs V200 control valve is the electro-hydraulic actuator with position feedback, called the P8, which makes it possible to achieve extremely precise control of the valve regardless of flow forces. These solutions are essential for the smooth and accurate operation of Hiab's truck-mounted loader cranes.



Key benefits include:

- Smooth, simultaneous movements for multiple crane functions
- Improved energy efficiency thanks to wide internal channels that reduce pressure drop and heat build-up
- High flow capacity of up to 300 liters per minute means consistent performance even in the most demanding tasks
- Precise control and multi-function handling that make work more efficient and productive, whatever the job
- Optimized integration designed to work perfectly with SPACEevo and variable pumps, enhancing performance
- Extensive testing and the highest standards of engineering mean reliability, safety and durability.



COMBIDRIVE 4 REMOTE CONTROL

If you want the best remote crane control experience, our CombiDrive 4 remote control is the only choice. It's built for modern job demands, combining smart technology, ergonomic design, and cutting-edge safety features.

It's lightweight and compact, weighing only 2,2 kg, with a long battery life of up to 9.5 hours. This makes it easy to handle during long shifts and comfortable to use even when wearing gloves, while the 8-function controller with haptic feedback and the high-resolution color tri-display enable precise operation and full focus on the task at hand.

Safety is built in with integrated lighting, as well as Confirmed View sensors that track the operator's position, hazard lights that alert the surrounding environment and puddle lights for improved visibility.

The CombiDrive 4 is also smart, customisable, and makes intelligent crane management easier than ever.

PACKED WITH FEATURES

The HIAB X-HiPro 408 is packed with a range of standard and optional features designed to enhance performance and secure peace of mind.

STANDARD

ENGINE CONTROL

This gives crane operators the ability to start, stop, and adjust the truck's engine remotely, directly from the CombiDrive 4 remote control. It's a smart feature designed to reduce idle time, fuel use, and environmental impact - all while improving operational convenience.

The Automatic Start/Stop system ensures the engine runs only when it's needed, while the Dynamic RPM Adjustment adjusts the RPM based on real-time crane activity, using the precise amount of power required for each task.

Save on fuel, reduce emissions, and extend the life of your engine - all without stepping out of position.

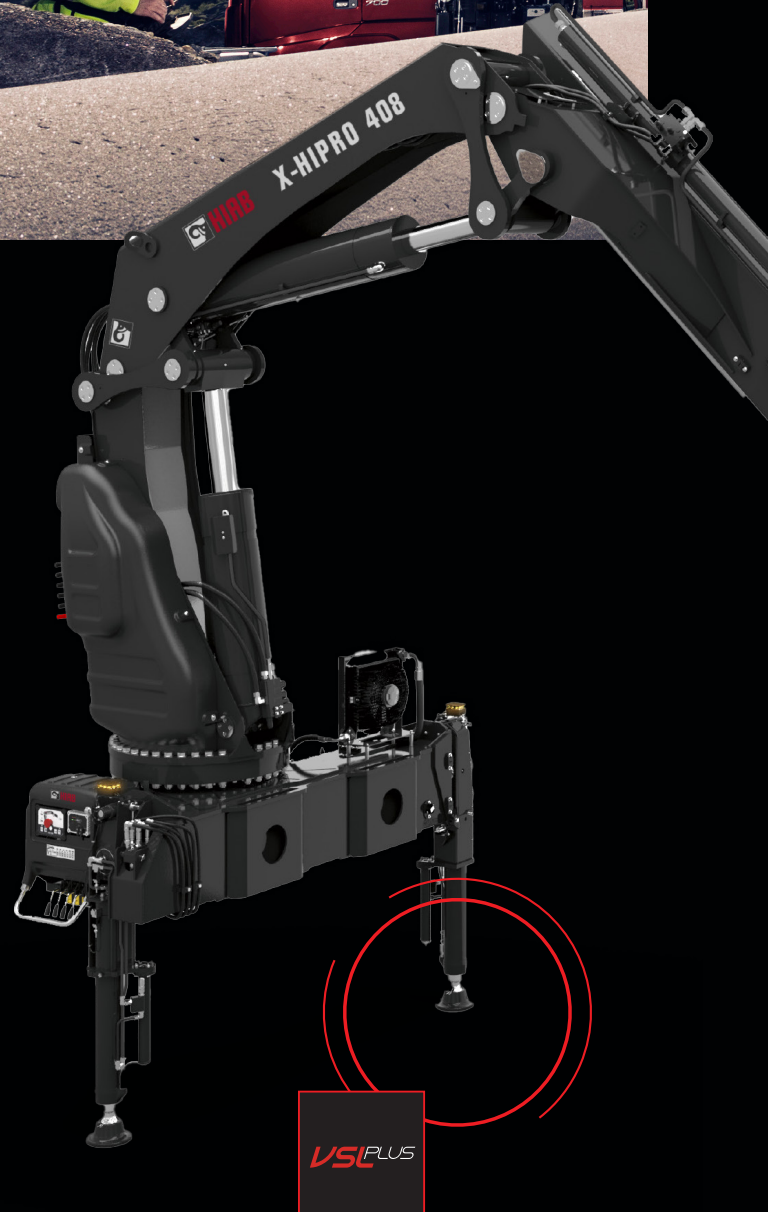
OPTIONAL

VARIABLE STABILITY LOGIC PLUS (VSL PLUS)

This intelligent safety system automatically calculates crane stability in real-time, based on the actual position and pressure on each stabilizer leg. Whether you're working on uneven terrain or with partially extended stabilizers, VSL+ ensures you can lift heavier loads safely — without compromising on performance.

Smart Stabilizer Leg Sensing maintains crane balance by monitoring the position and pressure of each leg, while Load-Aware Intelligence detects loads on the truck and adjusts parameters accordingly. The system even includes Total Truck Weight Consideration, optimizing lifting capacity and enhancing the crane's safe working area even in constrained environments.

With VSL+, you can lift more, faster, and safer, even in the most challenging conditions. It reduces setup constraints and increases usable crane capacity — maximizing productivity without added risk.



STANDARD FEATURES



Premium warranty

All HIAB loader cranes come with a two-year standard warranty, with the option to extend to a third year. Steel components are covered for five years, or up to 100,000 load cycles, protecting your investment and ensuring a long service life.



Automatic Speed Control (ASC)

This feature, unique to Hiab, gives an increase in lifting capacity of up to 10%, all in one smooth, continuous motion. It engages automatically as you reach the regular capacity limit, meaning that you can still lift the load where other cranes would have come to a complete stop. To compensate for the capacity boost, the speed of the inner and outer boom is slightly reduced, but capacity ceiling, safety and efficiency are significantly increased.



nDurance

Protect your investment and secure long-term performance with nDurance - the anti-corrosive protection. It's a technologically advanced pre-treatment and paint process, based on nano technology combined with state-of-the-art e-coating and powder painting, and this process will keep your crane protected and visually appealing year after year.



Connectivity

Our equipment comes with connectivity enabled which, in combination with our connected services, allows you to be in constant contact with your equipment, assets and colleagues to enhance your productivity, efficiency and safety.



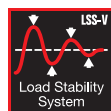
Automatic Duty Control (ADC)

Our unique and patented ADC function is the only fully automatic system of its type on the market. It can boost your crane's listed capacity in suspended load applications by 10% without imposing additional stress or fatigue on the steel structure, reducing maintenance over the lifetime of the crane while enhancing flexibility. With ADC, you can safely perform lifts that would otherwise exceed the crane's capacity, and you can work without interruption when a high-capacity lift is needed.



Continuous slewing

Continuous slewing gives you 360° freedom for faster lifts, allowing you to work without unnecessary backtracking while reducing downtime and speeding up load cycles. You can always choose the optimal lifting path, making operations safer and more efficient. The HIAB X-HiPro 408 is built for high precision at long reach or maximum lifting power close to the truck, depending on your needs.



Load Stability System for vertical movements (LSS-V)

LSS automatically compensates for unintentionally excessive lever moment in vertical operations, making crane operation faster and smoother while protecting the cargo, the crane and the surroundings against potential damage.

BUILT TO LAST

Engineering excellence, industry-leading workmanship, and durable, innovative materials give you long-term peace of mind.

5 YEARS industry leading warranty on steel structure and battery modules.

2 YEARS warranty for general parts including:

- Painting
- Seals
- Hoses
- Electric components



OPTIONAL FEATURES



Semi-Automatic Folding (SAF)

Assists with automatic folding and unfolding of the crane, reducing setup time and operator effort while helping you maximize productivity.



Synchronized Distance Control (SDC)

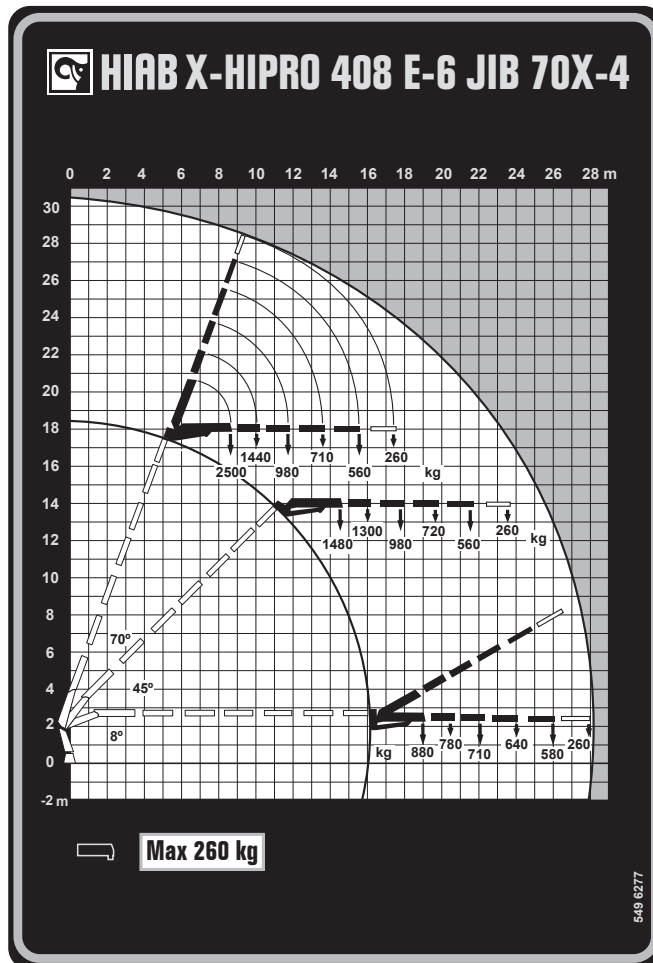
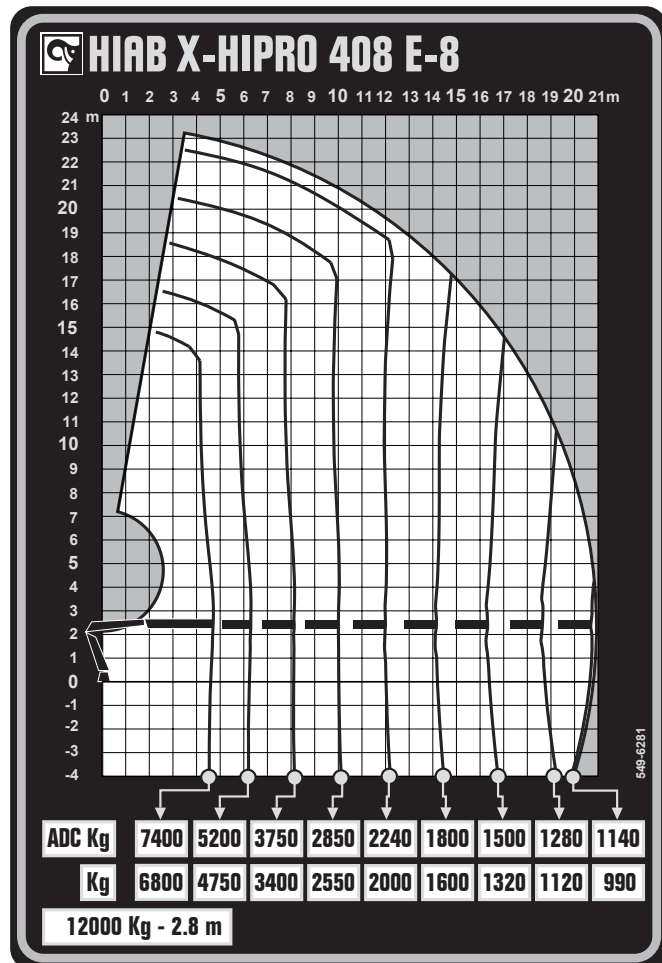
Automatically keep the load at a set distance from the crane's tip while only having to operate the extension movements from the remote with SDC. This reduces the need to operate multiple levers at the same time while increasing safety. It is very useful when handling loads that are farther and higher away from the operator, where visibility becomes the main obstacle to a safe movement.



TECHNICAL SPECIFICATIONS

Technical Data	X-HIPRO 408 E-8	X-HIPRO 408 E-6 J70X-4
Lifting Capacity (kNm)	344	353
Outreach, hydraulic extensions (m)	20,9	26,1
Outreach, with manual extension (m)	22,4	27,8
Installation space required, rotation area included (mm)	1 406	1 404
Height in folded position (mm)	2 458	2 722
Weight in standard version, without stabilizers (kg)	4 497	5 005
Weight, stabilizer equipment (kg)	458–873	458–873
Oil flow	140l/m	140l/m

Load diagrams





BOOST PRODUCTIVITY AND FLEXIBILITY WITH THE RIGHT ACCESSORIES

Extend the versatility of your Hiab crane by adding one or more tools from the wide range of our accessories. Manufactured to the highest standards, they enhance functionality and performance.

Pallet fork

Handling loads with a pallet fork has many advantages. Since the load is palletised and lifted from underneath, it is possible to lift many different types of loads. A pallet fork is also less expensive than a brick grab, which is the main alternative.



Brick grab

Using a brick grab offers many benefits, including speedier handling of your loads. The load does not have to be palletised, and it can be handled even in awkward positions where space is limited. Hiab brick grabs are extremely versatile and robust.



Quick Change Systems

The quick change system enables an easy exchange between different attachments, like switching from between the pallet fork and brick stack grapple. The mechanical coupling and locking are achieved by the turning motion of the rotator. You simply disconnect the quick couplings and disengage the locking device manually.



Easy to mount, easy to service

When choosing Hiab Selected Accessories, you can get even more out of your equipment. Hiab Selected Accessories live up to our market-leading Quality and Performance standards.



Hiab ProCare™ for planned performance

ProCare is a preventive, comprehensive, and fixed-fee service contract solution for Hiab equipment. It provides proactive maintenance and expert assistance that helps minimize unexpected downtime and unplanned service breaks while maximizing equipment performance, reliability, and lifespan. Simply choose the contract level that fits your needs.





BOOST YOUR BUSINESS WITH HIPERFORM

Hiab equipment offers the reliable and efficient performance you need to fulfil your customer commitments every day. Hiab Services takes this further with HiPerform smart solutions and an extensive expert network, boosting uptime and reliability across your equipment's lifecycle.

HiPerform smart solutions maximize your HIAB loader crane's lifecycle value by enhancing operator, equipment, and fleet performance. You choose the proactive maintenance or telematics data solutions that are best for your needs.

LEARN MORE HERE: www.hiab.com/en/HiPerform



SMARTER SERVICE

HiPerform leverages near real-time data and actual usage to streamline the maintenance of your connected Hiab crane. Our fixed-fee ProCare service packages help to prevent surprises while ensuring predictability, and HiConnect provides insights into your equipment's service history and upcoming service needs.

We ensure swift response and resolution, supported by a team of trained professionals and an extensive service network.

[FIND YOUR NEAREST SERVICE CENTRE ►](#)



GET THE KNOWLEDGE YOU NEED

HiConnect's telematics solution provides near real-time insights into over 100 parameters, such as battery status, route details, driver safety, and maintenance requirements. The comprehensive information is accessible online via the HiConnect portal.

Data-driven decisions

HiConnect lets you grasp your equipment's usage patterns, locations, and capacities, facilitating informed decisions to reduce downtime and boost asset efficiency, utilization, and safety.

Location control

Real-time tracking of each unit, along with monitoring of driving routes and times, enables the optimization of fuel and battery usage for upcoming tasks.





Contact your local
Hiab office for more
information ►

BUILT TO PERFORM

Hiab (Nasdaq Helsinki: HIAB) is a leading provider of smart and sustainable on road load-handling solutions, committed to delivering the best customer experience every day with the most engaged people and partners. Hiab's premium equipment includes HIAB, EFFER and ARGOS loader cranes, MOFFETT and PRINCETON truck mounted forklifts, LOGLIFT forestry cranes, JONSERED recycling cranes, MULTILIFT skiploaders and hooklifts, GALFAB roll-off cable hoists, ZEPRO, DEL and WALTCO tail lifts, and the service brand HIPERFORM, a comprehensive suite of smart solutions that help maximise the life-cycle value of Hiab's equipment.

hiab.com



HIAB