

# TECHNICAL SPECIFICATIONS

# X-HIDUO 092



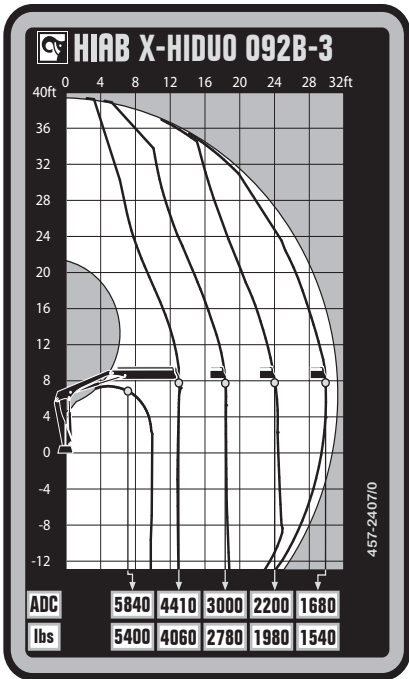
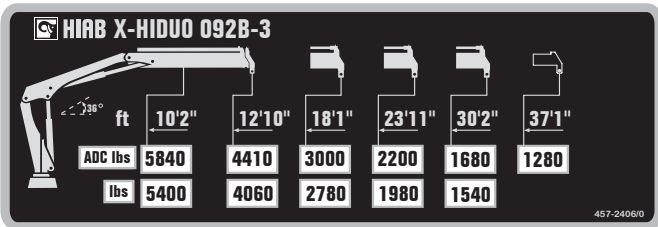
**BUILT TO PERFORM**



# HIAB X-HIDUO 092

## TECHNICAL SPECIFICATIONS

Technical Data	X-HIDUO 092 B-1	X-HIDUO 092 B-2	X-HIDUO 092 B-3	X-HIDUO 092 E-4	X-HIDUO 092 E-5
<b>Lifting capacity</b>					
Lifting capacity (ft-lbs)	61 955	59 005	56 792	56 792	52 367
<b>Outreach</b>					
Standard outreach (ft-lbs)	8' 10" - 7 055	9' 6" - 6 393	10' 2" - 5 842	7' 3" - 7 716	7' 3" - 7 165
	12' 6" - 4 960	12' 6" - 4 630	12' 10" - 4 409	13' 9" - 4 101	14' 1" - 3 880
	17' 9" - 3 527	16' 9" - 3 263	18' 1" - 2 998	19' - 2 778	19' 4" - 2 602
	-	23' 11" - 2 381	23' 11" - 2 205	25' 3" - 1 984	25' 7" - 1 764
	-	-	30' 2" - 1 676	31' 6" - 1 499	31' 10" - 1 323
	-	-	-	38' 1" - 1 235	38' 5" - 1 058
	-	-	-	-	44' 11" - 882
Outreach, hydraulic extensions (ft)	18' 9"	25' 3"	31' 10"	38' 1"	44' 11"
<b>Oil and tank</b>					
Rec OilFlow lo (gal/min)	12	12	12	12	12
Rec OilFlow hi (gal/min)	15	15	15	15	15
Work pressure (psi)	4 728	4 728	4 728	4 728	4 728
<b>Slewing</b>					
Slewing torque (ft-lbs)	7 892	7 892	7 892	7 892	7 892
Slewing angle (degrees)	406	406	406	406	406
<b>Dimensions</b>					
Height in folded position (in)	6' 7"	6' 7"	6' 7"	6' 7"	6' 7"
Width in folded position (in)	7' 3"	7' 7"	7' 10"	7' 7"	7' 10"
<b>Weights</b>					
Weight of crane w/o stabilizers (lbs)	2 139	2 381	2 579	2 778	2 954
Additional weight of hose & pipe kit (lbs)	143	143	143	165	165
Weight of stabilizers (lbs)	668	668	668	668	668
<b>Installation space</b>					
Installation space needed (in)	2' 3" - 2' 7"	2' 5" - 2' 7"	2' 6" - 2' 10"	2' 6" - 2' 10"	2' 7" - 2' 11"



*Disclaimer. This table shows a few examples of models, and represents some of all options available. With the opportunity to configure your crane, we can provide you with a crane perfectly tailored to your needs. Please contact your local Hiab sales representative for more information on the variety of options we can offer. We reserve the right to make changes. Illustrations, drawings and data are not always in accordance with the latest version or standard model in production. The models in the pictures may present special equipment or colors.*

## BUILT TO PERFORM

Hiab (Nasdaq Helsinki: HIAB) is a leading provider of smart and sustainable on road load-handling solutions, committed to delivering the best customer experience every day with the most engaged people and partners. Hiab's premium equipment includes HIAB and EFFER loader cranes, MOFFETT and PRINCETON truck mounted forklifts, MULTILIFT skiploaders and hooklifts, GALFAB roll-off cable hoists, and WALTCO tail lifts, and the service brand HIPERFORM, a comprehensive suite of smart solutions that help maximize the life-cycle value of Hiab's equipment. As the industry pioneer, Hiab continues to make on road load-handling smarter, safer and more sustainable to build a better tomorrow.

[www.hiabgroup.com](http://www.hiabgroup.com)

