

TECHNICAL SPECIFICATIONS

eX.235L



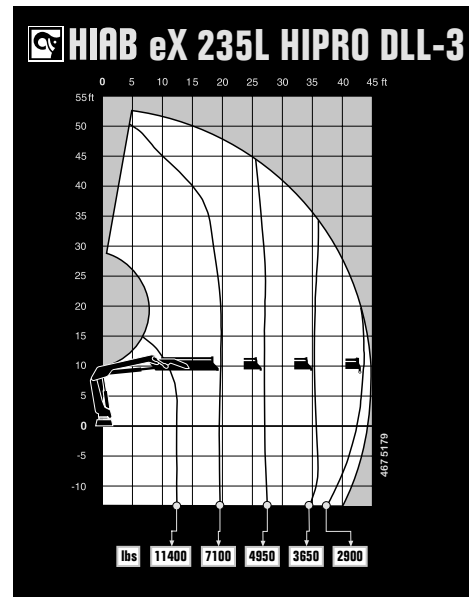
BUILT TO PERFORM



HIAB eX.235L

TECHNICAL SPECIFICATIONS

Technical Data	eX.235L HiPro DLL-1	eX.235L HiPro DLL-2	eX.235L HiPro DLL-3
Lifting capacity			
Lifting capacity (ft-lbs)	152 380	146 111	141 096
Outreach			
Standard outreach (ft-lbs)	12' 2" - 12 346	12' 2" - 11 905	12' 6" - 11 244
	19' 4" - 7 826	19' 8" - 7 386	19' 8" - 7 165
	26' 7" - 5 732	26' 11" - 5 291	26' 11" - 4 982
	-	34' 9" - 4 057	35' 1" - 3 660
	-	-	43' 4" - 2 910
Outreach, hydraulic extensions (ft)	28' 2"	36' 5"	44' 11"
Oil and tank			
Rec OilFlow lo (gal/min)	24	24	24
Rec OilFlow hi (gal/min)	32	32	32
Work pressure (psi)	4 960	4 960	4 960
Slewing			
Slewing Torque (ft-lbs)	20 873	20 873	20 873
Slewing angle (degrees)	415	415	415
Weights			
Weight of crane w/o stabilizers (lbs)	4 266	4 685	5 104
Additional weight of hose & pipe kit (lbs)	159	187	233
Weight of stabilizers (lbs)	944	944	944



Disclaimer. We reserve the right to make changes. Illustrations, drawings and data are not always in accordance with the latest version or standard model in production. The models in the pictures may present special equipment or colors.

BUILT TO PERFORM

Hiab is a leading provider of smart and sustainable load handling solutions. We are committed to delivering the best customer experience every day with the most engaged people and partners. Hiab's premium equipment includes HIAB, EFFER and ARGOS loader cranes, MOFFETT and PRINCETON truck mounted forklifts, LOGLIFT forestry cranes, JONSERED recycling cranes, MULTILIFT skiploaders and hooklifts, GALFAB roll-off cable hoists, and tail lifts under the ZEPRO, DEL and WALTCO brands. As the industry pioneer, Hiab continues to make load handling smarter, safer and more sustainable to build a better tomorrow.

Hiab is part of Cargotec Corporation.

www.hiab.com

