

TECHNICAL SPECIFICATIONS
ix.258 HIDUO



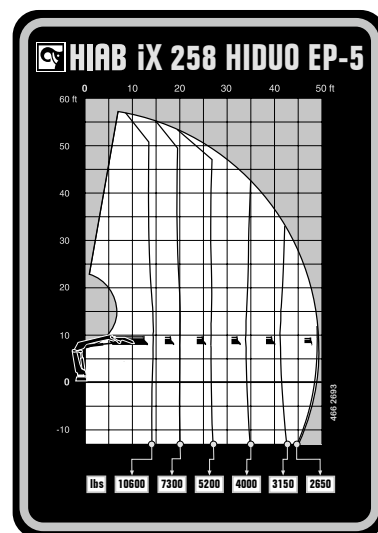
BUILT TO PERFORM



HIAB iX.258 HIDUO

TECHNICAL SPECIFICATIONS

Technical Data	IX.258 HIDUO EP-4	IX.258 HIDUO EP-5	IX.258 HIDUO E-6	IX.258 HIDUO E-8
Lifting capacity				
Max. dynamic moment (ft-lbs)	158 723	155 699	149 356	142 349
Outreach				
Standard outreach (ft-lbs)	-	-	7' 10" - 18 519	7' 10" - 17 857
	14' 5" - 11 023	14' 9" - 10 582	14' 9" - 10 141	15' 5" - 9 259
	20' - 7 716	20' 4" - 7 275	20' - 6 945	20' 8" - 6 261
	26' 7" - 5 556	26' 11" - 5 247	25' 11" - 5 026	26' 7" - 4 365
	33' 9" - 4 277	34' 1" - 3 968	32' 2" - 3 792	32' 10" - 3 131
	41' 4" - 3 483	41' 8" - 3 175	38' 9" - 2 954	39' 4" - 2 337
	-	49' 2" - 2 645	45' 7" - 2 425	46' 3" - 1 808
	-	-	52' 10" - 2 028	53' 6" - 1 455
	-	-	-	61' - 1 190
	-	-	-	68' 7" - 1 058
Outreach, hydraulic extensions (ft)	41' 7"	49' 5"	53' 1"	68' 10"
Oil and tank				
Rec OilFlow lo (gal/min)	18	18	18	18
Rec OilFlow hi (gal/min)	24	24	24	24
Work pressure (psi)	4 641	4 641	4 641	4 641
Slewing				
Slewing Torque (ft-lbs)	20 873	20 873	20 873	20 873
Slewing angle (degrees)	410	410	410	410
Dimensions				
Height in folded position (in)	7' 10"	7' 10"	7' 10"	7' 10"
Width in folded position (in)	8' 2"	8' 2"	8' 3"	8' 3"
Weights				
Weight of crane w/o stabilizers (lbs)	6 173	6 482	6 945	7 694
Additional weight of hose & pipe kit (lbs)	177	179	331	212
Weight of stabilizers (lbs)	1 025	1 025	1 025	1 025
Installation Space				
Installation space needed (in)	3' 9" - 4'	3' 9" - 4'	3' 10" - 4' 1"	3' 11" - 4'



This table shows a few examples of models, and represents some of all options available. With the opportunity to configure your crane, we can provide you with a crane perfectly tailored to your needs. Please contact your local dealer for more information on the variety of options we can offer.

Disclaimer. We reserve the right to make changes. Illustrations, drawings and data are not always in accordance with the latest version or standard model in production. The models in the pictures may present special equipment or colours.

BUILT TO PERFORM

Hiab is a leading provider of smart and sustainable load handling solutions. We are committed to delivering the best customer experience every day with the most engaged people and partners. Hiab's premium equipment includes HIAB, EFFER and ARGOS loader cranes, MOFFETT and PRINCETON truck mounted forklifts, LOGLIFT forestry cranes, JONSERED recycling cranes, MULTILIFT skiploaders and hooklifts, GALFAB roll-off cable hoists, and tail lifts under the ZEPRO, DEL and WALTCO brands. As the industry pioneer, Hiab continues to make load handling smarter, safer and more sustainable to build a better tomorrow. Hiab is part of Cargotec Corporation.

www.hiab.com

BD-IX.258HIDUO-EN-WW_240402 MET25-1855B

