

EFFER iQ.525 HP

Precision at height





Maximise productivity and payload with outstanding performance

The EFFER iQ.525 HP combines the lifting performance of larger cranes with a smaller footprint, enhancing operational speed and maximising payload.

Urban construction sites demand strong lifting performance in limited space. You need a crane that delivers real power and speed, while remaining precise, safe, and efficient.

The EFFER iQ.525 HP is a 50 tonne-metre crane that gives you outstanding performance without the bulk of a larger crane. It offers one of the best lifting moment-to-weight ratios in its class, providing impressive vertical lifting capability while keeping the crane compact. The result? More available space for payload and greater flexibility for your truck setup.

With a vertical reach of up to 33.3 m and a horizontal reach of 29.4 m, the EFFER iQ.525 HP is built for demanding work in construction, logistics, and infrastructure projects.

High-strength materials and lightweight joint design offer a combination of durability and efficiency, helping you complete more lifts with lower operating weight.

At the core of this performance is the V10-Force boom. Its unique 10-sided profile provides exceptional vertical reach and maintains stiffness even in extreme lifting positions. This design also allows for the installation of higher-capacity fly jibs, expanding your working range without compromising stability.

Advanced control systems make performance easier to manage. The SPACEvo control system technology and Olsbergs hydraulic control valves are engineered to work together seamlessly, delivering smooth, precise, and safe operation. The lightweight, ergonomic CombiDrive 4 remote control keeps operators comfortable and in full control throughout the workday.

The EFFER iQ.525 HP is your reliable colleague built to perform in tough environments, day after day. It helps you lift more efficiently, use your truck capacity more effectively, and complete demanding jobs with confidence.

Engineered to work as one

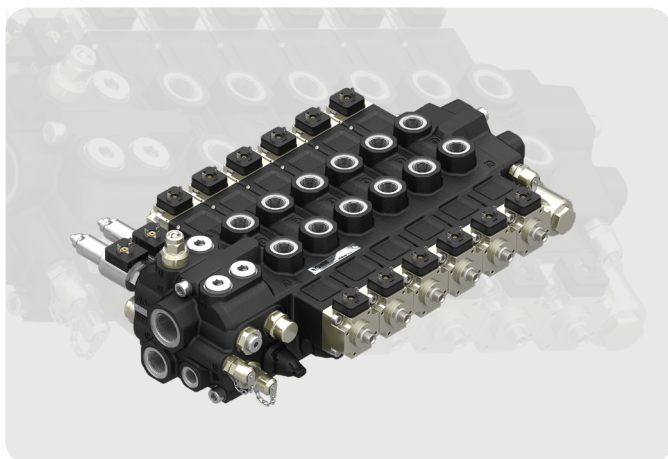


SPACEevo

The SPACEevo control system technology is the brain inside the crane, improving productivity, safety, and efficiency through intuitive controls, advanced sensor-based safety systems, and optimised energy use. The precision and rapid movements save time and reduce the risk of costly damage.

The open, modular nature of SPACEevo allows for the addition of new functionalities and features over time, helping to future-proof your crane. This ensures the EFFER iQ.525 HP has a long operating life and a higher residual value.

The dual-core processor, sensors, actuators, and new harness design ensure the crane works in all conditions, giving the crane the power it needs while increasing reliability and durability for completing the most difficult jobs.



Olsbergs V200 hydraulic control valves

Olsbergs hydraulic control valves are designed specifically for loader cranes – and have been developed for that purpose for over 40 years. Unique to the Olsbergs V200 control valve is the electro-hydraulic actuator with position feedback, called the P8, which makes it possible to achieve extremely precise control of the valve regardless of flow forces. These solutions are essential for the smooth and accurate operation of Hiab's truck-mounted loader cranes.

Key benefits include:

- Smooth, simultaneous movements for multiple crane functions
- Improved energy efficiency thanks to wide internal channels that reduce pressure drop and heat build-up
- High flow capacity of up to 300 litres per minute means consistent performance even in the most demanding tasks
- Precise control and multi-function handling that make work more efficient and productive, whatever the job
- Optimised integration designed to work perfectly with SPACEevo and variable pumps, enhancing performance
- Extensive testing and the highest standards of engineering mean reliability, safety, and durability

Power meets precision

Innovative boom design and intelligent remote technology give you outstanding vertical lifting performance with complete operator control.



Optional

CombiDrive 4

Weighing only 2.2 kg with a long battery life of up to 9.5 hours, the ergonomic CombiDrive 4 remote is easy to handle during long shifts and comfortable to use even when wearing gloves. The eight-function controller with haptic feedback and the high-resolution colour tri-display enable precise operation and full focus on the task at hand.

Safety is built in with integrated lighting, as well as Confirmed View sensors that track the operator's position, hazard lights that alert the surrounding environment, and puddle lights for improved visibility. If the remote control is dropped, communication with the truck is immediately interrupted, and operation can only resume once the remote is restarted, preventing any unintended movement. The smart, customisable CombiDrive 4 remote supports skilled operators with intelligent crane management that enhances precision and control.

V10-Force boom

The V10-Force boom delivers benchmark vertical lifting performance comparable to larger cranes. Its unique ten-sided profile provides exceptional vertical reach with minimal side deviation and oscillations, allowing you to install higher-capacity fly jibs while maintaining boom stiffness even in extreme vertical positions.

This innovative design contributes to a best-in-class power-to-weight ratio, giving you the lifting capability you need while leaving more room for payload and keeping the crane agile enough to work in tight spaces.



Load Stability System for vertical movements (LSS-V)

LSS automatically compensates for unintentionally excessive lever movement in vertical operations, making crane operation faster and smoother while protecting the cargo, the crane, and the surroundings against potential damage.



Automatic Speed Control (ASC)

This feature, unique to Hiab, gives an increase in lifting capacity of up to 10%, all in one smooth, continuous motion. It engages automatically as you reach the regular capacity limit, meaning that you can still lift the load where other cranes would have come to a complete stop. To compensate for the capacity boost, the speed of the inner and outer boom is slightly reduced, but capacity ceiling, safety, and efficiency are significantly increased.



Optional

Engine Control

Engine Control gives crane operators the ability to start, stop, and adjust the truck's engine remotely, directly from the CombiDrive 4 remote control. It's a smart feature designed to reduce idle time, fuel use, and environmental impact – all while improving operational convenience.

The Automatic Start/Stop system ensures the engine runs only when it's needed, while the Dynamic RPM Adjustment adjusts the truck engine RPM based on real-time crane activity, using the precise amount of power required for each task. Save on fuel, reduce emissions, and extend the life of your engine, without stepping out of position.

[See how Engine Control gives you smarter power](#)



Optional

Variable Stability Logic Plus (VSL+)

VSL+ is a safety system that maximises capacity by calculating stability according to the position of the stabiliser legs and the total weight of the truck. Accounting for the true load, it can provide significantly more lifting capacity when it really matters. Whether you're working on uneven terrain or with partially extended stabilisers, VSL+ ensures you can lift heavier loads safely.

VSL+ also improves stability during vertical reach by using a shortened stabiliser opening, allowing you to work in more constrained settings like urban environments. With VSL+, you can lift more, and do it faster, and safer, even in the most challenging conditions.

[See how VSL+ maximises capacity](#)



Built to last

Engineering excellence, industry-leading workmanship, and durable, innovative materials give you long-term peace of mind.



THREE YEARS warranty on main steel structural components.

ONE YEAR standard warranty on all other components, excluding wear and tear – extendable to two years or 2,000 working hours.

Optional

Dynamic Load Charts (DLC)

Dynamic Load Charts (DLC) provide operators with a clear, easy-to-read kg-m visual display directly on the remote control. The system delivers real-time horizontal lifting capacity data for both the crane and jib, continuously adapting to the current configuration and working position. This ensures precise, confident operation while maximising performance and maintaining the highest safety standards.



Optional

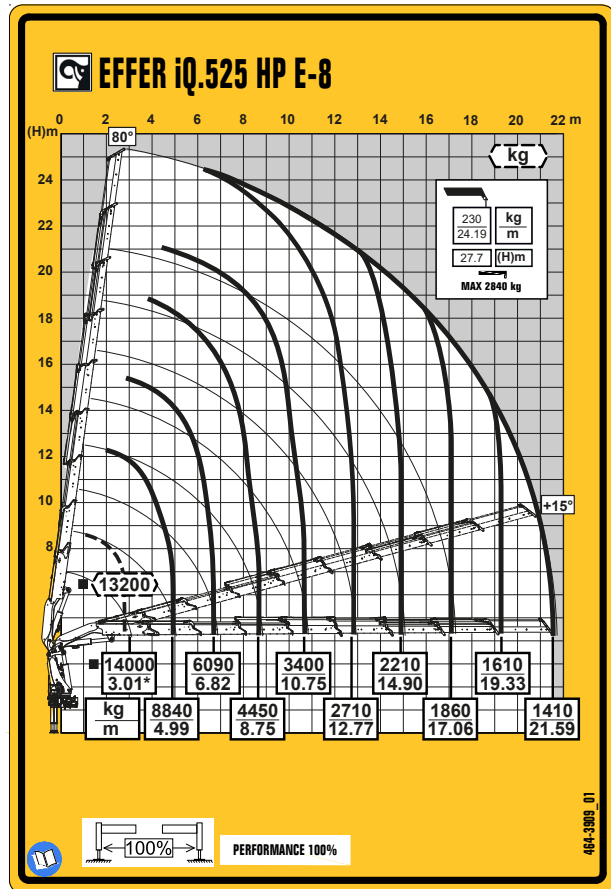
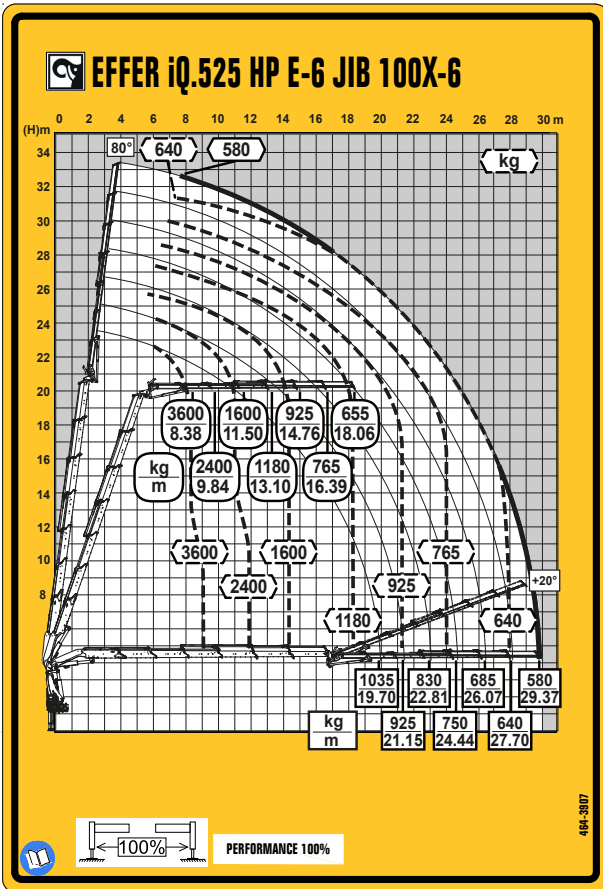
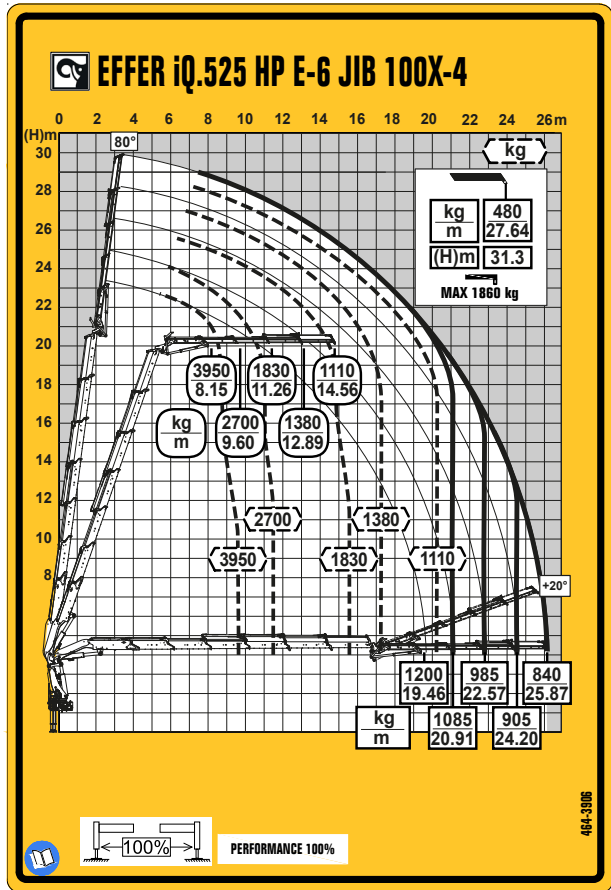
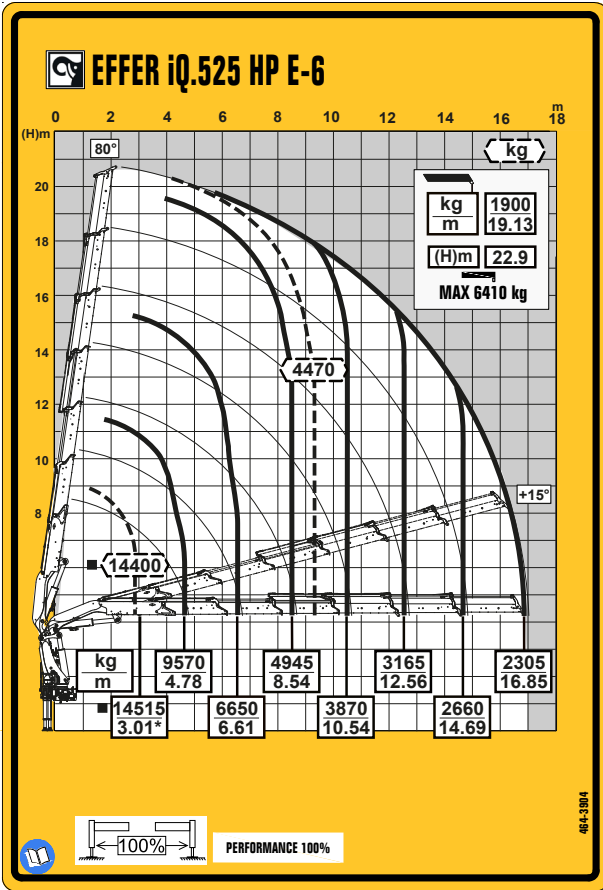
Semi-Automatic Folding (SAF)

SAF assists with automatic folding and unfolding of the crane, reducing setup time and operator effort while helping you maximise productivity.

Technical specifications

Technical data	E-6	E-6 JIB 100X-4	E-6 JIB 100X-6	E-8
Lifting capacity (kNm)	446	446	446	433
Outreach, hydraulic extensions (m)	16.85	25.87	29.37	21.59
Outreach, with manual extension (m)	19.13	27.64	any manual extension	24.19
Height in folded position (mm)	2495	2595	2595	2495
Weight (kg)	5975	6930	7085	6390
Oil flow	100 l/min	100 l/min	100 l/min	100 l/min





Additional load diagrams are available.
Find the configuration that suits your needs



Boost productivity and flexibility with the right accessories

Extend the versatility of your crane by adding one or more tools from the wide range of our accessories. Manufactured to the highest standards, they enhance functionality and performance.



Pallet fork

Handling loads with a pallet fork has many advantages. Since the load is palletised and lifted from underneath, it's possible to lift many different types of loads. A pallet fork is also less expensive than a brick grab, which is the main alternative.



Brick grab

Using a brick grab offers many benefits, including speedier handling of your loads. The load doesn't have to be palletised, and it can be handled even in awkward positions where space is limited. Hiab brick grabs are extremely versatile and robust.



Clamshell buckets

We have a wide range of clamshell buckets available for your loader crane, where the right choice depends on your current operations – and your future plans.

Options range from narrow digging buckets for cable work, to versatile midsize buckets for lifting and digging, and large-volume scooping buckets for moving bulk material. Paired with the right rotator and accessories, your bucket becomes a complete solution built for maximum daily productivity.

MEWP personnel baskets

Our MEWP personnel baskets are compliant with the latest EN280:2022-1 safety standards, providing a safe and stable solution for personnel lifting. Available in Gravity Leveling or Hydraulic Self-Leveling versions, the baskets automatically maintain a balanced position for enhanced safety and operator comfort – even in changing conditions.

Built for durability and reliable performance at height, they are ideal for maintenance applications and fully compatible as an accessory option with MEWP-prepared Hiab cranes equipped with the SPACEevo control system.



[Explore our wide range of loader crane accessories](#)



Services that keep your equipment working



Your customers depend on you. To deliver every day, your equipment must work reliably. HiPerform is Hiab's complete service offering. It brings together maintenance, connected equipment data, and operator training in one package. The goal is simple: fewer breakdowns, better planning, safer operators, and longer equipment life. HiPerform includes three parts: ProCare™, HiConnect™, and HiSkill™.

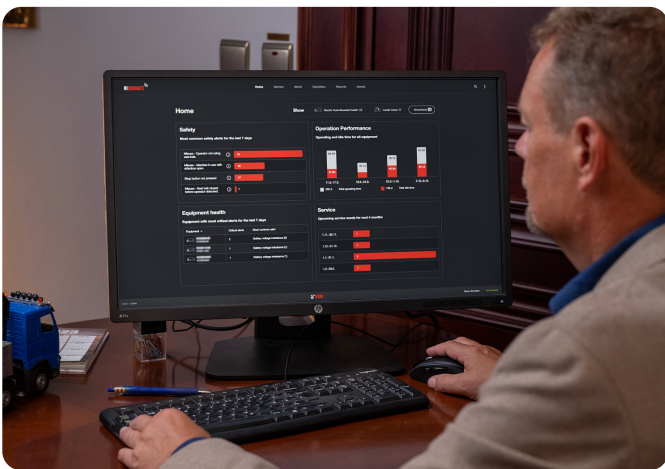
Planned service with fixed costs

ProCare™ is a preventive service agreement for your Hiab equipment. It covers regular maintenance and inspections for a fixed fee. With ProCare™, your equipment is serviced by trained technicians at the right intervals. This helps prevent unexpected breakdowns and costly repairs. You know your service costs in advance and can plan your business with fewer surprises. You choose the service level that fits your operation – we take care of the maintenance.



Know how your equipment is used

HiConnect™ connects your loader crane and gives you access to useful equipment data. You can see how the crane is being used, check service history, and follow upcoming maintenance needs. Because the information is based on actual usage, it's easier to plan service at the right time and reduce unnecessary downtime. With HiConnect™, you have a better overview and better control of your fleet.



Train operators in a safe environment

HiSkill™ is a training simulator that helps operators practice crane operation safely. It combines virtual reality with real controls so operators can train without risk to people, loads, or equipment.

Operators can practice different lifting situations, improve their skills, and gain confidence before working on real jobs. Better training helps reduce accidents, avoid damage, and improve everyday performance.



BUILT TO PERFORM



Hiab (Nasdaq Helsinki: HIAB) is a leading provider of smart and sustainable on-road load handling solutions, committed to delivering the best customer experience every day with the most engaged people and partners. Hiab's premium equipment includes HIAB, EFFER, ARGOS and ING loader cranes, MOFFETT and PRINCETON truck mounted forklifts, LOGLIFT forestry cranes, JONSERED recycling cranes, MULTILIFT skiploaders and hooklifts, GALFAB roll-off cable hoists, ZEPRO, DEL and WALTCO tail lifts, and the service brand HIPERFORM, a comprehensive suite of smart solutions that help maximise the life-cycle value of Hiab's equipment.

www.hiab.com