

TECHNICAL SPECIFICATIONS
J1500RZ



HIAB

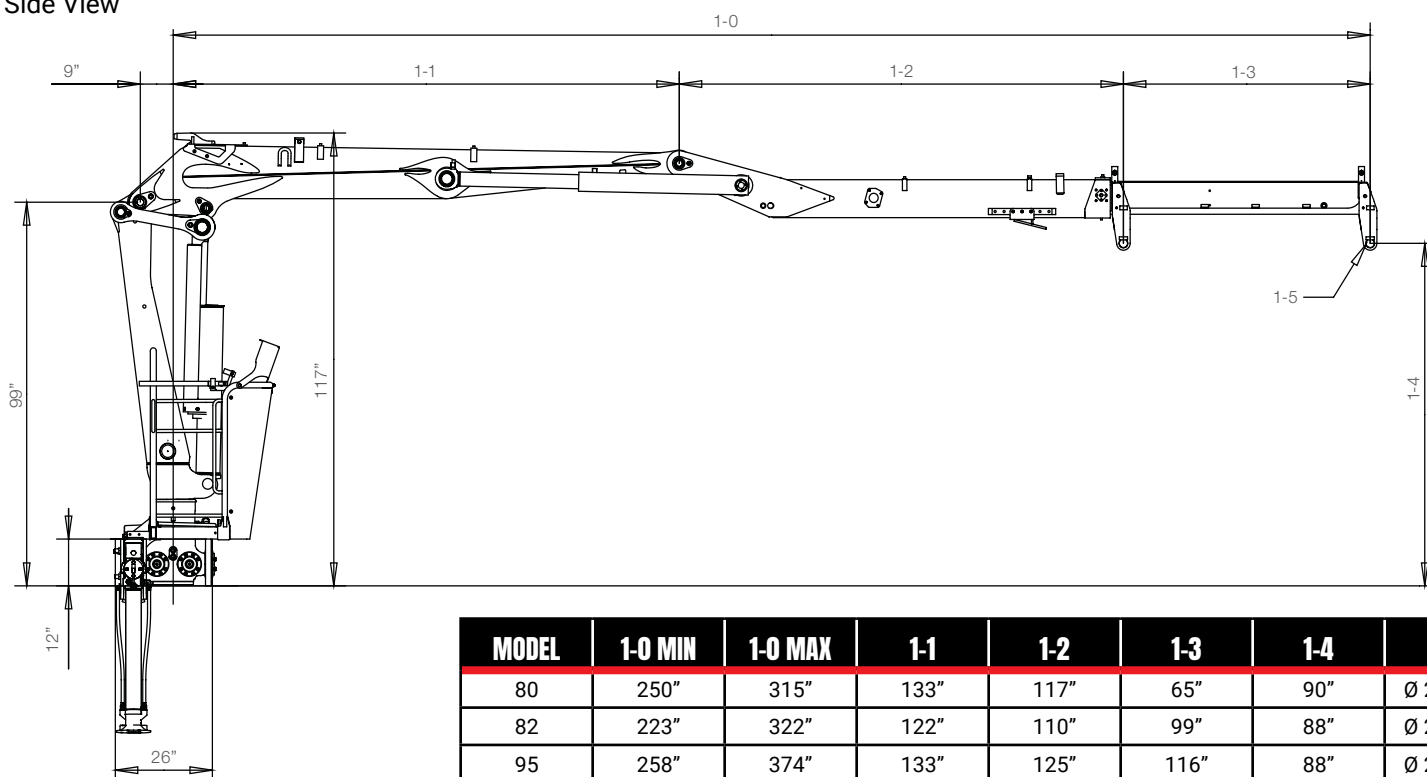
BUILT TO PERFORM

J
SERIES

J1500RZ BASIC DATA

TECHNICAL DATA	J1500RZ 80	J1500RZ 82	J1500RZ 95
Max. lifting capacity (lb-ft)	101 850	102 200	95 200
Outreach, hydraulic extensions (ft)	26' 2"	26' 10"	31' 1"
Outreach / lifting capacity (ft - lb)	10' - 9 000	10' - 9 150	10' - 8 600
	13' - 7 050	13' - 7 170	13' - 6 610
	16' - 5 840	16' - 5 620	16' - 5 510
	20' - 5 070	19' - 5 070	19' - 4 760
	23' - 4 320	23' - 4 230	23' - 4 060
	26' - 4 010	26' - 4 000	26' - 3 480
	-	-	30' - 2 780
Slewing system	Single		
Slewing angle (°)	425		
Slewing torque, gross (lb-ft)	21 110		21 840
Max. working pressure (psi)	3 770		
Recommended oil flow - fixed pump (gal/min), 1-pump	18 - 24		
Recommended oil flow - fixed pump (gal/min), 2-pump	2 x 16 - 21		
Weight (lb)	5 030	4 320	5 400

Side View



Disclaimer. Hiab cranes have been built to meet the highest standards of safety and service life and have been thoroughly tested. Strength calculations for this model have been carried out in accordance with EN13001 in fatigue class S2. Cargotec's certified Quality Assurance System complies with ISO 9001. Some of the items in our literature may be extra equipment. Certain applications may require an official permit. We reserve the right to change technical specifications without prior notice. Hiab cranes produced for EU-countries are CE marked and comply with the European Standard EN12999.

Hiab is the world's leading provider of on-road load handling equipment. Customer satisfaction is the first priority for us. Hiab's product range includes HIAB loader cranes, JONSERED recycling and forestry cranes, LOGLIFT forestry cranes, MOFFETT truck mounted forklifts, and MULTILIFT demountables, as well as DEL, WALTCO, and ZEPRO tail lifts.

www.hiab.us.com
Hiab is part of Cargotec.
www.cargotec.com
hiab.us.com

Hiab USA Inc
12233 Williams Road
Perrysburg, OH 43551 USA
tel. 419 482 6000
fax. 419 482 6001



V2022.08.15

