

Vally Crosslift 2500

A 2500kg-rated capacity cross lifting beam for truck-mounted cranes, designed for the safe and efficient handling of goods like 2-ton Big Bags.

KEY BENEFITS

Tool-free, Fast setup

Modular design allows for tool-free assembly in under 30 seconds.

Safe load distribution

Evenly distributes weight across four hooks, ensuring stability and protecting lift straps

Compact storage

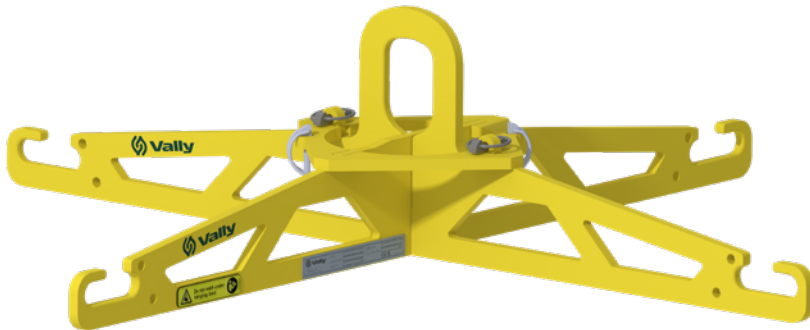
Low-weight and compact for simple transport and storage (e.g., under a flatbed)

Certified performance

CE marked and approved for 2500 kg lifts

SEGMENT

Construction, logistics, landscaping



TECHNICAL DATA	CROSS LIFT 2500	CROSS LIFT 2500 WIDE
Lifting capacity (kg)	2500kg	2500kg
Measurement assembled (Length, Width, Height in mm)	1070 / 1070 / 257	1560 / 1560 / 287
Measurements folded (Length, Width, Height in mm)	1070 / 60 / 257	1560 / 60 / 287
Weight (kg)	15.4	25.2