

TECHNICAL SPECIFICATIONS
X-HIPRO 362



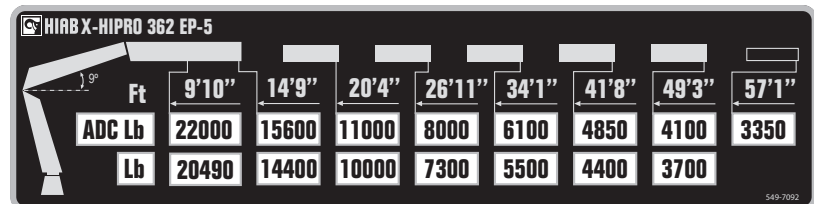
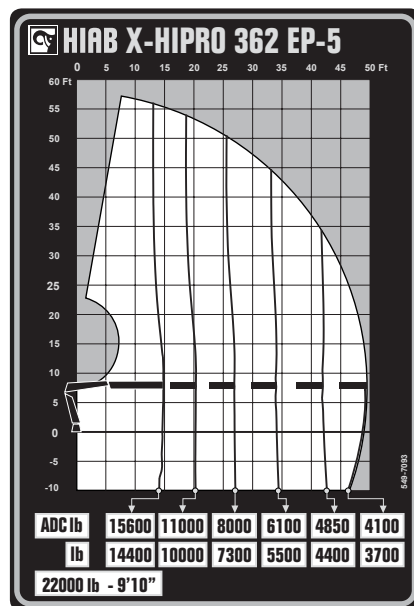
BUILT TO PERFORM



HIAB X-HIPRO 362

TECHNICAL SPECIFICATIONS

Technical Data	X-HIPRO 362 EP-2	X-HIPRO 362 EP-3	X-HIPRO 362 EP-4	X-HIPRO 362 EP-5
Lifting capacity				
Lifting capacity (ft-lbs)	242 475	236 979	231 960	228 535
Outreach				
Standard outreach (ft-lbs)	10' 6" - 22 046 13' 9" - 17 637 29' 8" - 12 346 26' 3" - 9 260 - -	10' 6" - 22 046 14' 1" - 16 976 19' 8" - 11 905 26' 3" - 8 929 33' 6" - 6 945 -	10' 2" - 22 046 14' 5" - 16 314 20' - 11 464 26' 7" - 8 378 33' 10" - 6 393 41' 4" - 5 203 -	9' 10" - 22 046 14' 9" - 15 653 20' 4" - 11 023 26' 11" - 7 937 34' 1" - 6 063 41' 8" - 4 850 49' 3" - 4 101
Outreach, hydraulic extensions (ft)	26' 3"	33' 9"	41' 7"	49' 5"
Oil and tank				
Rec OilFlow lo (gal/min)	26	26	26	26
Rec OilFlow hi (gal/min)	37	37	37	37
Work pressure (psi)	5 076	5 076	5 076	5 076
Slewing				
Slewing torque (ft-lbs)	19 988	19 988	19 988	19 988
Slewing angle (degrees)	420	420	420	420
Dimensions				
Height in folded position (in)	7' 10"	7' 10"	7' 10"	7' 10"
Width in folded position (in)	8' 2"	8' 2"	8' 2"	8' 2"
Weights				
Weight of crane w/o stabilizers (lbs)	6 955	7 418	7 868	8 216
Additional weight of hose & pipe kit (lbs)	146	146	180	180
Weight of stabilizers (lbs)	1 225	1 225	1 225	1 225
Installation space				
Installation space needed (in)	3' 8" - 3' 11"	3' 11"	4' 1"	4' 1"



Disclaimer. This table shows a few examples of models, and represents some of all options available. With the opportunity to configure your crane, we can provide you with a crane perfectly tailored to your needs. Please contact your local Hiab sales representative for more information on the variety of options we can offer. We reserve the right to make changes. Illustrations, drawings and data are not always in accordance with the latest version or standard model in production. The models in the pictures may present special equipment or colors.

BUILT TO PERFORM

Hiab (Nasdaq Helsinki: HIAB) is a leading provider of smart and sustainable on road load-handling solutions, committed to delivering the best customer experience every day with the most engaged people and partners. Hiab's premium equipment includes HIAB and EFFER loader cranes, MOFFETT and PRINCETON truck mounted forklifts, MULTILIFT skiploaders and hooklifts, GALFAB roll-off cable hoists, and WALTCO tail lifts, and the service brand HIPERFORM, a comprehensive suite of smart solutions that help maximize the life-cycle value of Hiab's equipment. As the industry pioneer, Hiab continues to make on road load-handling smarter, safer and more sustainable to build a better tomorrow.

www.hiabgroup.com

