

TECHNICAL SPECIFICATIONS

X-HIPRO 418

X-HIPRO 418



BUILT TO PERFORM

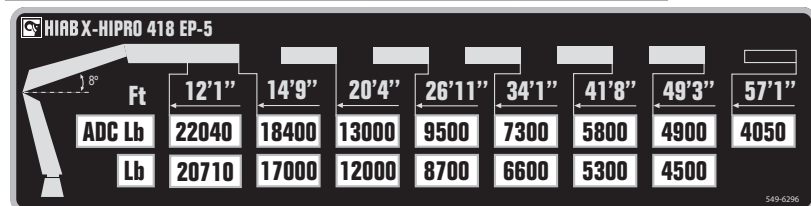
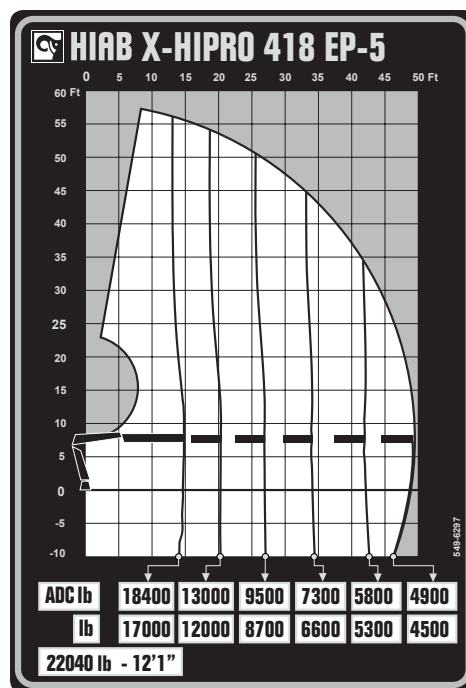
BUILT TO PERFORM



HIAB X-HIPRO 418

TECHNICAL SPECIFICATIONS

Technical Data	X-HIPRO 418 EP-3	X-HIPRO 418 EP-5
Lifting capacity		
Lifting capacity (ft-lbs)	281 749	273 636
Outreach		
Standard outreach (ft-lbs)	13' 5" - 22 046	12' 2" - 22 046
	14' 1" - 19 842	14' 9" - 18 519
	19' 8" - 14 110	20' 4" - 13 007
	26' 3" - 10 472	26' 11" - 9 480
	33' 6" - 8 157	34' 1" - 7 275
	-	41' 8" - 5 842
	-	49' 3" - 4 894
Outreach, hydraulic extensions (ft)	33' 10"	49' 6"
Oil and tank		
Rec OilFlow lo (gal/min)	26	26
Rec OilFlow hi (gal/min)	32	32
Work pressure (psi)	5 511	5 511
Slewing		
Slewing torque (ft-lbs)	30 978	30 978
Slewing angle (degrees)	999	999
Dimensions		
Height in folded position (in)	8' 1"	8' 1"
Width in folded position (in)	8' 3"	8' 3"
Weights		
Weight of crane w/o stabilizers (lbs)	7 791	8 636
Additional weight of hose & pipe kit (lbs)	146	180
Weight of stabilizers (lbs)	1 925	1 925
Installation space		
Installation space needed (in)	4' 6" - 4' 7"	4' 7" - 4' 8"



Disclaimer. This table shows a few examples of models, and represents some of all options available. With the opportunity to configure your crane, we can provide you with a crane perfectly tailored to your needs. Please contact your local Hiab sales representative for more information on the variety of options we can offer. We reserve the right to make changes. Illustrations, drawings and data are not always in accordance with the latest version or standard model in production. The models in the pictures may present special equipment or colors.

BUILT TO PERFORM

Hiab (Nasdaq Helsinki: HIAB) is a leading provider of smart and sustainable on road load-handling solutions, committed to delivering the best customer experience every day with the most engaged people and partners. Hiab's premium equipment includes HIAB and EFFER loader cranes, MOFFETT and PRINCETON truck mounted forklifts, MULTILIFT skiploaders and hooklifts, GALFAB roll-off cable hoists, and WALTCO tail lifts, and the service brand HIPERFORM, a comprehensive suite of smart solutions that help maximize the life-cycle value of Hiab's equipment. As the industry pioneer, Hiab continues to make on road load-handling smarter, safer and more sustainable to build a better tomorrow.

www.hiabgroup.com

