

# EFFER iQ.1400 HP

## Heavy lifting at a higher level





# Get exceptional power and precision with lower operating costs

To handle power, you need control. With its structural strength and advanced intelligent systems, the EFFER iQ.1400 HP enables heavy lifting with outstanding vertical reach and precision, while maximising your payload.

Construction, logistics, and crane rental businesses operating in metro areas all face the same challenges: lifting heavy loads to demanding heights in tight spaces, on schedule, and within budget. You need the capacity of a larger crane but without the weight that eats into your payload and limits your flexibility.

The EFFER iQ.1400 HP is a colleague you can rely on when the stakes are high. This 135 tonne-metre loader crane is a compact, efficient alternative to larger cranes, providing the same vertical capability while leaving more room for valuable payload and lowering your operating costs.

At the core of this performance is the V10-Force boom. Its unique 10-sided profile and pioneering 83° angle provide exceptional vertical reach, allowing for precision in tight spaces and working closer to buildings. The powerful HD JIB, 26 m up and over capability, and 37.5 m total vertical reach make the EFFER iQ.1400 HP ideal for handling heavy loads at extreme heights.

SPACEevo control system technology and Olsbergs hydraulic control valves work together seamlessly, delivering smooth, precise, and safe operation. The lightweight, ergonomic CombiDrive 4 remote control keeps operators comfortable and in full control throughout the workday.

With its structural strength and advanced intelligent systems, the EFFER iQ.1400 HP gives you a perfect combination of power and control. Every component is meticulously engineered and completely integrated from the start, delivering the quality and reliability Hiab is renowned for.

Whatever the job, this powerful crane delivers the performance, precision, and flexibility you need to maximise your operational efficiency, and ultimately boost your bottom line.

# Engineered to work as one

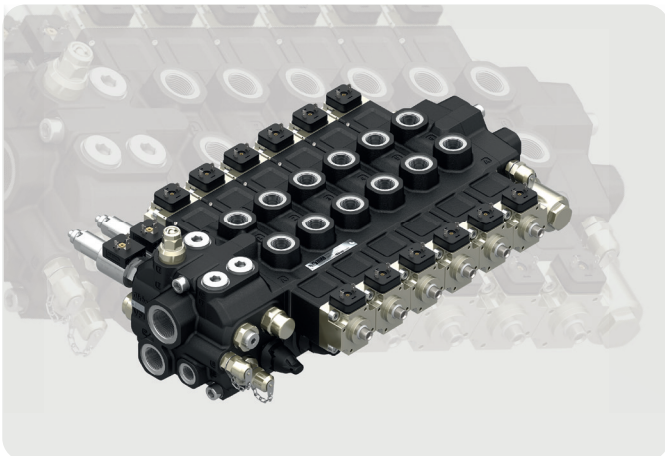


## SPACEevo

The SPACEevo control system technology is the brain inside the crane, improving productivity, safety, and efficiency through intuitive controls, advanced sensor-based safety systems, and optimised energy use. The precision and rapid movements save time and reduce the risk of costly damage.

The open, modular nature of SPACEevo allows for the addition of new functionalities and features over time, helping to future-proof your crane. This ensures that the EFFER iQ.1400 HP has a long operating life and a higher residual value.

The dual-core processor, sensors, actuators, and new harness design ensure the crane works in all conditions, giving the crane the power it needs while increasing reliability and durability for completing the most difficult jobs.



## Olsbergs V200 hydraulic control valves

Olsbergs hydraulic control valves are designed specifically for loader cranes – and have been developed for that purpose for over 40 years. Unique to the Olsbergs V200 control valve is the electro-hydraulic actuator with position feedback, called the P8, which makes it possible to achieve extremely precise control of the valve regardless of flow forces. These solutions are essential for the smooth and accurate operation of Hiab's truck-mounted loader cranes.

### Key benefits include:

- Smooth, simultaneous movements for multiple crane functions
- Improved energy efficiency thanks to wide internal channels that reduce pressure drop and heat build-up
- High flow capacity of up to 300 litres per minute means consistent performance even in the most demanding tasks
- Precise control and multi-function handling that make work more efficient and productive, whatever the job
- Optimised integration designed to work perfectly with SPACEevo and variable pumps, enhancing performance
- Extensive testing and the highest standards of engineering mean reliability, safety, and durability

# Power meets precision

Innovative boom design and intelligent remote technology give you outstanding vertical lifting performance with complete operator control.



## CombiDrive 4

Weighing only 2.2 kg with a long battery life of up to 9.5 hours, the ergonomic CombiDrive 4 remote is easy to handle during long shifts and comfortable to use even when wearing gloves. The eight-function controller with haptic feedback and the high-resolution colour tri-display enable precise operation and full focus on the task at hand.

Safety is built in with integrated lighting, as well as Confirmed View sensors that track the operator's position, hazard lights that alert the surrounding environment, and puddle lights for improved visibility. If the remote control is dropped, communication with the truck is immediately interrupted, and operation can only resume once the remote is restarted, preventing any unintended movement. The smart, customisable CombiDrive 4 remote supports skilled operators with intelligent crane management that enhances precision and control.

## V10-Force boom

The V10-Force boom delivers benchmark vertical lifting performance comparable to larger cranes. Its unique ten-sided profile provides exceptional vertical reach with minimal side deviation and oscillations, allowing you to install higher-capacity fly jibs while maintaining boom stiffness even in extreme vertical positions. Thanks to the pioneering 83° vertical angle, you can come closer to buildings and increase precision.

With its innovative design, the V10-Force boom contributes to a best-in-class power-to-weight ratio, giving you the lifting capability you need while leaving more room for payload and keeping the crane agile enough to work in tight spaces.



## Variable Stability Logic Plus (VSL+)

VSL+ is a safety system that maximises capacity by calculating stability according to the position of the stabiliser legs and the total weight of the truck. Accounting for the true load, it can provide significantly more lifting capacity when it really matters. Whether you're working on uneven terrain or with partially extended stabilisers, VSL+ ensures you can lift heavier loads safely.

VSL+ also improves stability during vertical reach by using a shortened stabiliser opening, allowing you to work in more constrained settings like urban environments. With VSL+, you can lift more, and do it faster, and safer, even in the most challenging conditions.

[See how VSL+ maximises capacity](#)





### Load Stability System for vertical movements (LSS-V)

LSS automatically compensates for unintentionally excessive lever movement in vertical operations, making crane operation faster and smoother while protecting the cargo, the crane, and the surroundings against potential damage.



### Automatic Duty Control (ADC)

Our patented ADC function is a fully automatic system designed to optimise crane performance in suspended load applications. By intelligently managing duty parameters and dynamic load factors, ADC enables up to 10% higher effective utilisation within approved operating conditions – without increasing structural stress or accelerating fatigue. This results in greater operational flexibility, reduced long-term maintenance demands, and improved productivity during high-demand lifts – all while maintaining compliance with the crane’s certified load ratings.



### Automatic Speed Control (ASC)

This feature, unique to Hiab, gives an increase in lifting capacity of up to 10%, all in one smooth, continuous motion. It engages automatically as you reach the regular capacity limit, meaning that you can still lift the load where other cranes would have come to a complete stop. To compensate for the capacity boost, the speed of the inner and outer boom is slightly reduced, but capacity ceiling, safety, and efficiency are significantly increased.

Optional

### Integrated pulley system

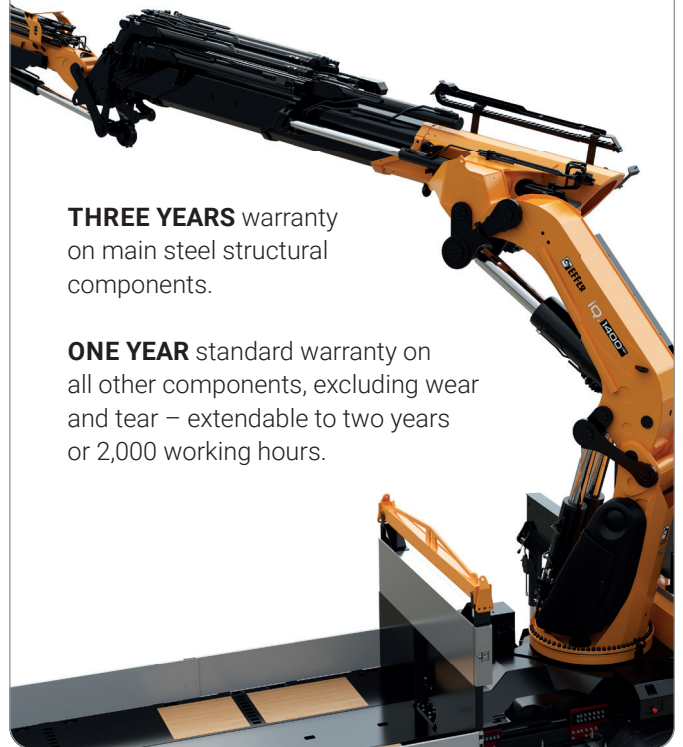
EFFER’s integrated pulley system uses a smooth wind-and-drive motion to deliver powerful, effortless lifting with maximum precision. It avoids the need to disassemble the pulleys and rope from the crane. All parts are fully integrated, even when the crane is folded. That saves time, increases operator safety, and reduces truck space needed for the accessories. For the operator, it means smoother, easier, and more controlled lifting with less manual adjustment and less effort.

### Multipower JIB

The Multipower JIB performance allows you to keep the maximum lifting capability at each of the extension’s level steps, even from the sixth to the ninth, whereas typically the combination of the main boom and JIB partly loses their lifting power.

# Built to last

Engineering excellence, industry-leading workmanship, and durable, innovative materials give you long-term peace of mind.



**THREE YEARS** warranty on main steel structural components.

**ONE YEAR** standard warranty on all other components, excluding wear and tear – extendable to two years or 2,000 working hours.

### Boom Deployment Assistance (BDA)

The BDA prevents the operator from moving the second boom or extensions in wrong directions during the folding or unfolding operation, removing the risk of unwanted damage from manual handling.

Optional

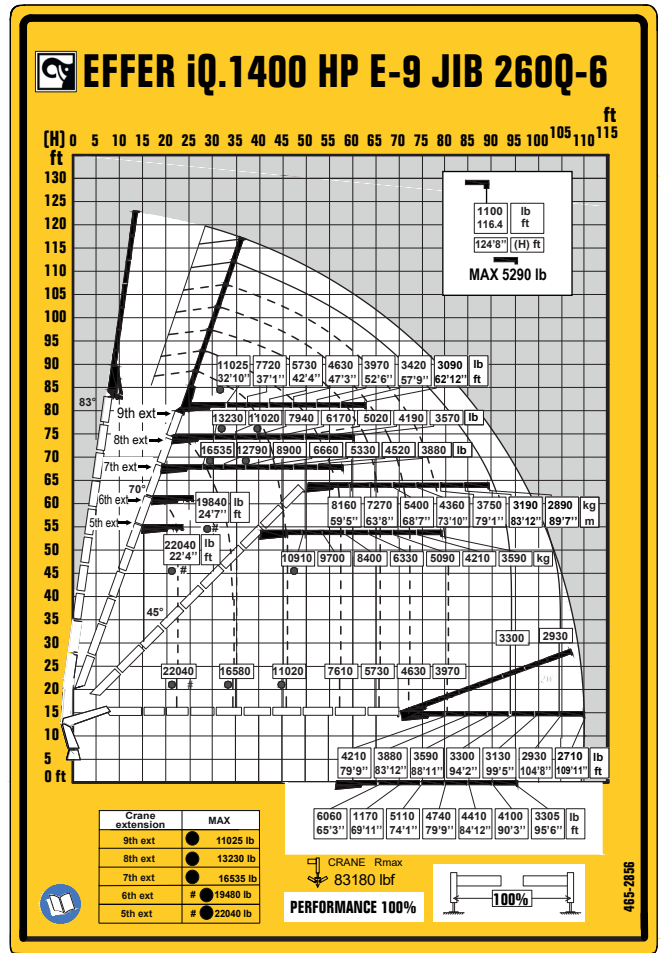
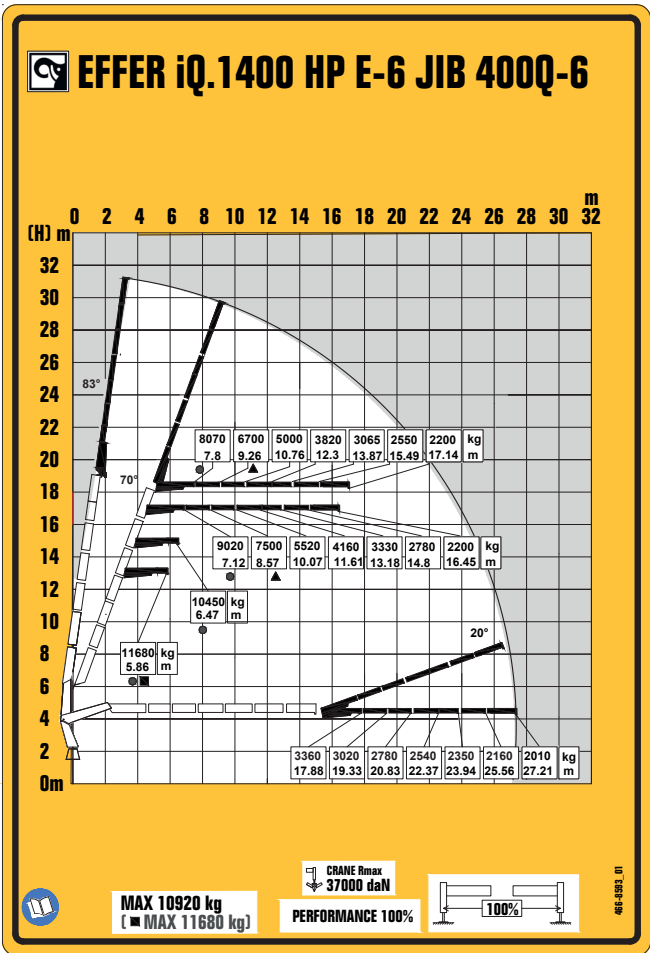
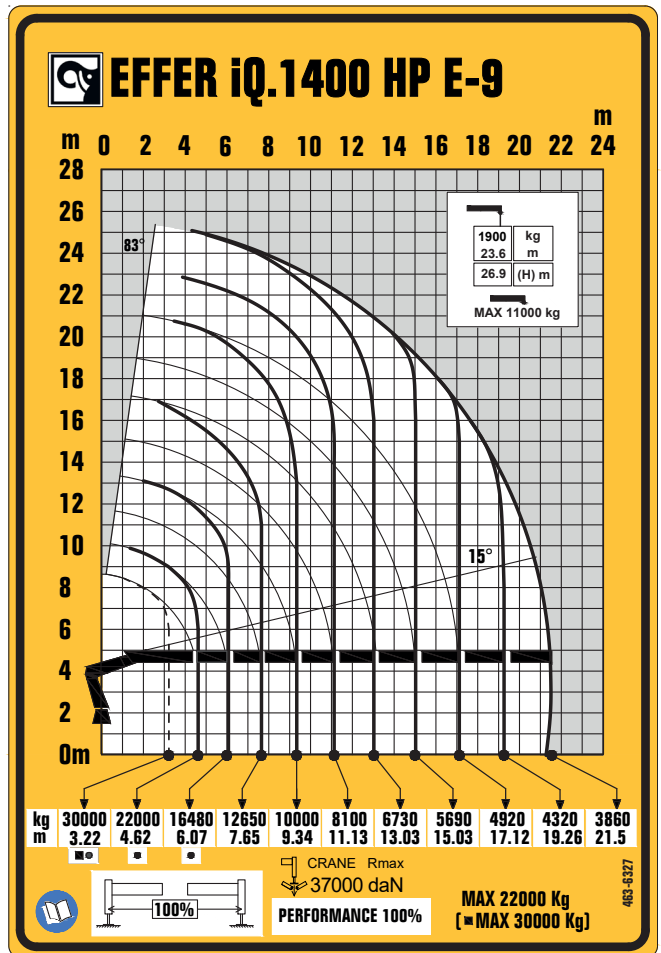
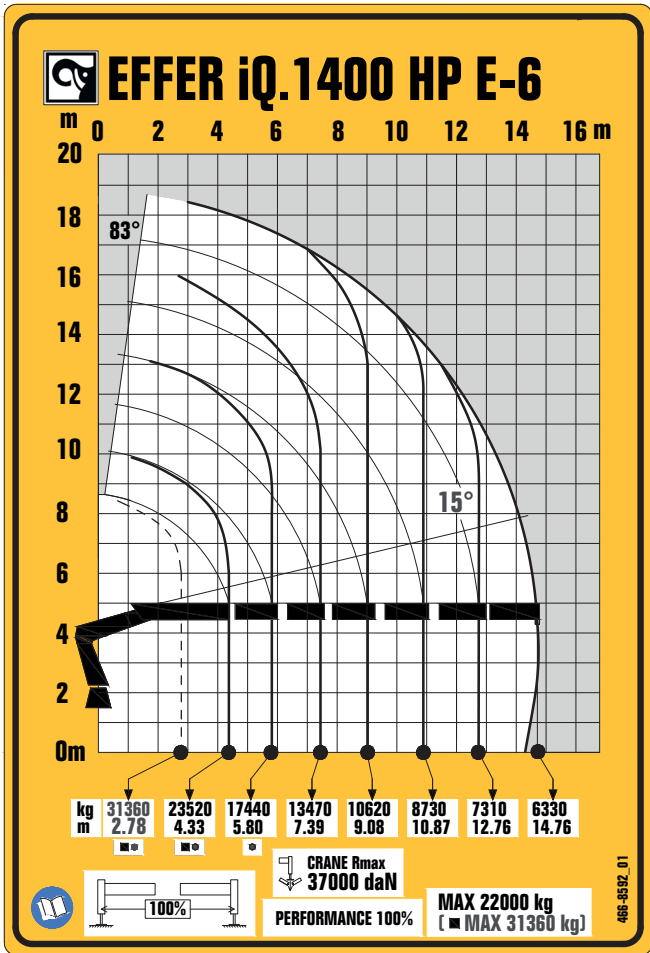
### Centralised greasing system

The main pins on the crane boom can easily be greased from one safe and comfortable place. The operator saves time, stays safer, and doesn’t have to climb around the crane to grease each point – everything can be done quickly from one easy location.

# Technical specifications

Technical data	E-6	E-6 JIB 400Q-6	E-9	E-9 JIB 260Q-6
Lifting capacity (kNm)	1019	1019	997	997
Outreach, hydraulic extensions (m)	14.8	27.2	21.5	33.5
Outreach, with manual extension (m)	-	-	23.6	35.4
Installation space, rotation area incl. (mm)	2507	2680	2507	2680
Height in folded position (mm)	2711	2928	2711	2888
Weight (kg)	11125	13600	12300	14215
Oil flow	220 l/min	220 l/min	220 l/min	220 l/min







# Boost productivity and flexibility with the right accessories

Extend the versatility of your crane by adding one or more tools from the wide range of our accessories. Manufactured to the highest standards, they enhance functionality and performance.



## Pallet fork

Handling loads with a pallet fork has many advantages. Since the load is palletised and lifted from underneath, it's possible to lift many different types of loads. A pallet fork is also less expensive than a brick grab, which is the main alternative.



## Brick grab

Using a brick grab offers many benefits, including speedier handling of your loads. The load doesn't have to be palletised, and it can be handled even in awkward positions where space is limited. Hiab brick grabs are extremely versatile and robust.



## Clamshell buckets

We have a wide range of clamshell buckets available for your loader crane, where the right choice depends on your current operations – and your future plans.

Options range from narrow digging buckets for cable work, to versatile midsize buckets for lifting and digging, and large-volume scooping buckets for moving bulk material. Paired with the right rotator and accessories, your bucket becomes a complete solution built for maximum daily productivity.

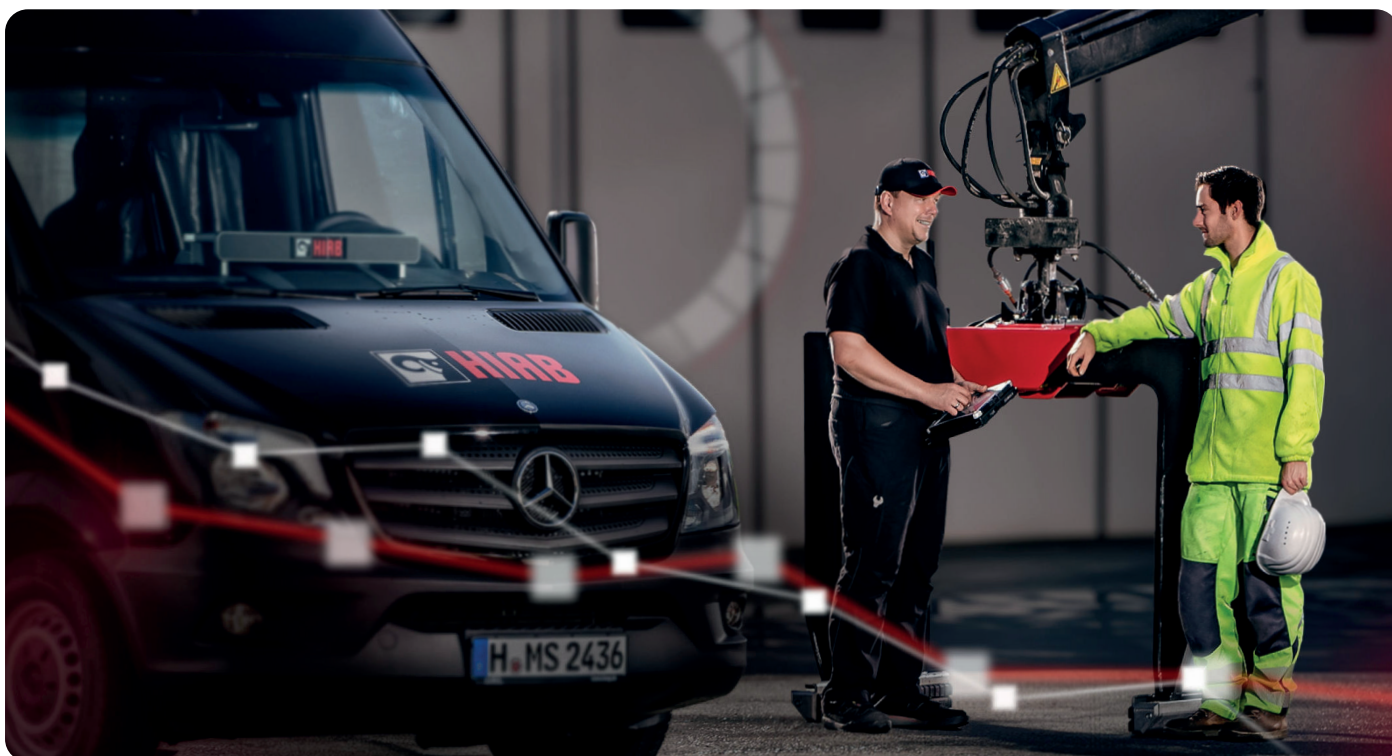
## MEWP personnel baskets

Our MEWP personnel baskets are compliant with the latest EN280:2022-1 safety standards, providing a safe and stable solution for personnel lifting. Available in Gravity Leveling or Hydraulic Self-Leveling versions, the baskets automatically maintain a balanced position for enhanced safety and operator comfort – even in changing conditions.

Built for durability and reliable performance at height, they are ideal for maintenance applications and fully compatible as an accessory option with MEWP-prepared Hiab cranes equipped with the SPACEevo control system.



[Explore our wide range of loader crane accessories](#)



# Services that keep your equipment working



Your customers depend on you. To deliver every day, your equipment must work reliably. HiPerform is Hiab's complete service offering. It brings together maintenance, connected equipment data, and operator training in one package. The goal is simple: fewer breakdowns, better planning, safer operators, and longer equipment life. HiPerform includes three parts: ProCare™, HiConnect™, and HiSkill™.

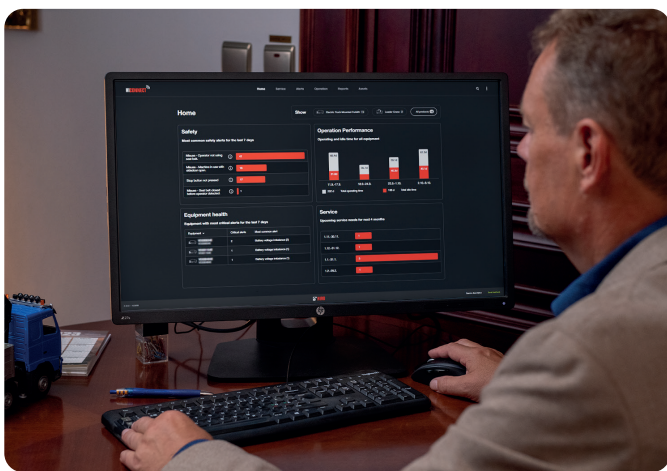
## Planned service with fixed costs

ProCare™ is a preventive service agreement for your Hiab equipment. It covers regular maintenance and inspections for a fixed fee. With ProCare™, your equipment is serviced by trained technicians at the right intervals. This helps prevent unexpected breakdowns and costly repairs. You know your service costs in advance and can plan your business with fewer surprises. You choose the service level that fits your operation – we take care of the maintenance.



## Know how your equipment is used

HiConnect™ connects your loader crane and gives you access to useful equipment data. You can see how the crane is being used, check service history, and follow upcoming maintenance needs. Because the information is based on actual usage, it's easier to plan service at the right time and reduce unnecessary downtime. With HiConnect™, you have a better overview and better control of your fleet.



## Train operators in a safe environment

HiSkill™ is a training simulator that helps operators practice crane operation safely. It combines virtual reality with real controls so operators can train without risk to people, loads, or equipment.

Operators can practice different lifting situations, improve their skills, and gain confidence before working on real jobs. Better training helps reduce accidents, avoid damage, and improve everyday performance.



## BUILT TO PERFORM



Hiab (Nasdaq Helsinki: HIAB) is a leading provider of smart and sustainable on-road load handling solutions, committed to delivering the best customer experience every day with the most engaged people and partners. Hiab's premium equipment includes HIAB, EFFER, ARGOS and ING loader cranes, MOFFETT and PRINCETON truck mounted forklifts, LOGLIFT forestry cranes, JONSERED recycling cranes, MULTILIFT skiploaders and hooklifts, GALFAB roll-off cable hoists, ZEPRO, DEL and WALTCO tail lifts, and the service brand HIPERFORM, a comprehensive suite of smart solutions that help maximise the life-cycle value of Hiab's equipment.

[www.hiab.com](http://www.hiab.com)