

TECHNICAL SPECIFICATIONS

X-HIPRO 558



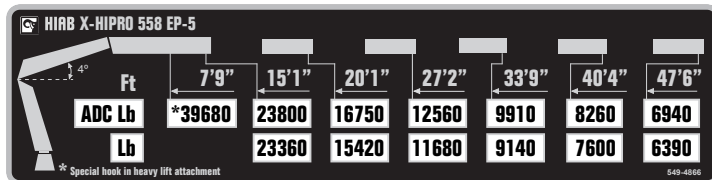
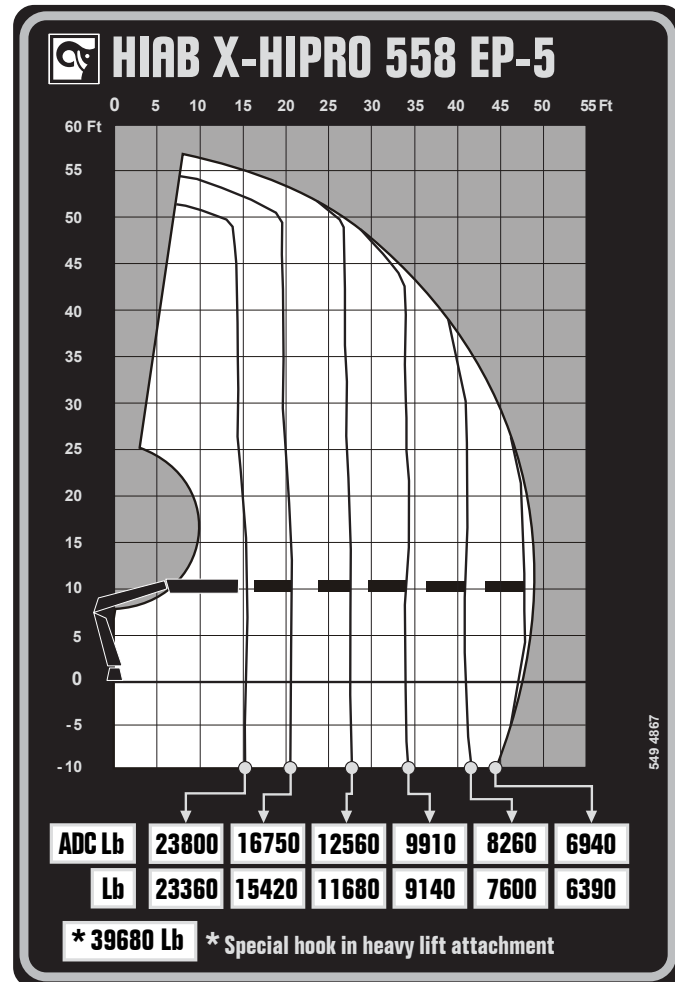
BUILT TO PERFORM



HIAB X-HIPRO 558

TECHNICAL SPECIFICATIONS

Technical Data	X-HIPRO 558 EP-3	X-HIPRO 558 EP-4	X-HIPRO 558 EP-5
Lifting capacity			
Lifting capacity (ft-lbs)	368 486	362 438	358 972
Outreach			
Standard outreach (ft-lbs)	15' 1" - 24 471	14' 5" - 25 133	15' 1" - 23 810
	21' - 17 417	20' 4" - 17 637	21' - 16 755
	27' 3" - 13 448	26' 7" - 13 228	27' 3" - 12 566
	33' 10" - 10 692	33' 2" - 10 472	33' 10" - 9 921
	-	39' 8" - 8 708	40' 4" - 8 267
	-	-	47' 7" - 6 945
Outreach, hydraulic extensions (ft)	33' 10"	39' 8"	47' 7"
Oil and tank			
Rec OilFlow lo (gal/min)	26	26	26
Rec OilFlow hi (gal/min)	32	32	32
Work pressure (psi)	5 511	5 511	5 511
Slewing			
Slewing torque (ft-lbs)	47 942	47 942	47 942
Slewing angle (degrees)	999	999	999
Dimensions			
Height in folded position (in)	8' 2"	8' 2"	8' 2"
Width in folded position (in)	8' 4"	8' 4"	8' 4"
Weights			
Weight of crane w/o stabilizers (lbs)	8 876	9 290	9 760
Additional weight of hose & pipe kit (lbs)	110	135	150
Weight of stabilizers (lbs)	1 975	1 975	1 975
Installation space			
Installation space needed (in)	4' 10"	4' 10"	4' 10"



Disclaimer. This table shows a few examples of models, and represents some of all options available. With the opportunity to configure your crane, we can provide you with a crane perfectly tailored to your needs. Please contact your local Hiab sales representative for more information on the variety of options we can offer. We reserve the right to make changes. Illustrations, drawings and data are not always in accordance with the latest version or standard model in production. The models in the pictures may present special equipment or colors.

BUILT TO PERFORM

Hiab (Nasdaq Helsinki: HIAB) is a leading provider of smart and sustainable on road load-handling solutions, committed to delivering the best customer experience every day with the most engaged people and partners. Hiab's premium equipment includes HIAB and EFFER loader cranes, MOFFETT and PRINCETON truck mounted forklifts, MULTILIFT skiploaders and hooklifts, GALFAB roll-off cable hoists, and WALTCO tail lifts, and the service brand HIPERFORM, a comprehensive suite of smart solutions that help maximize the life-cycle value of Hiab's equipment. As the industry pioneer, Hiab continues to make on road load-handling smarter, safer and more sustainable to build a better tomorrow.

www.hiabgroup.com

