

**TECHNICAL SPECIFICATIONS**  
**X-DUO 178**



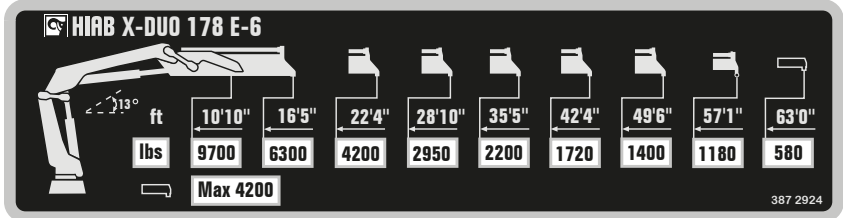
**BUILT TO PERFORM**



# HIAB X-DUO 178

## TECHNICAL SPECIFICATIONS

Technical Data	X-DUO 178 B-1	X-DUO 178 B-2	X-DUO 178 B-3	X-DUO 178 E-4	X-DUO 178 E-5	X-DUO 178 E-6
<b>Lifting capacity</b>						
Lifting capacity (ft-lbs)	120 444	115 576	112 109	110 118	107 389	105 103
<b>Outreach</b>						
Standard outreach (ft-lbs)	10' 6" - 11 244	10' 6" - 11 023	11' 2" - 10 031	10' 2" - 10 803	10' 6" - 10 252	10' 10" - 9 700
	14' 9" - 8 157	15' 1" - 7 606	15' 1" - 7 386	15' 9" - 6 945	16' 1" - 6 614	16' 5" - 6 283
	20' 8" - 5 842	21' - 5 423	21' - 5 115	21' 8" - 4 806	22' - 4 497	22' 4" - 4 189
	-	27' 7" - 4 101	27' 7" - 3 792	28' 3" - 3 483	28' 7" - 3 219	28' 11" - 2 954
	-	-	34' 5" - 2 998	34' 9" - 2 733	35' 1" - 2 469	35' 5" - 2 205
	-	-	-	41' 8" - 2 249	42' - 1 962	42' 4" - 1 720
Outreach, hydraulic extensions (ft)	21' 6"	28' 4"	35' 4"	42' 2"	49' 9"	57' 6"
<b>Oil and tank</b>						
Rec OilFlow lo (gal/min)	12	12	12	12	12	12
Rec OilFlow hi (gal/min)	15	15	15	15	15	15
Work pressure (psi)	4 467	4 467	4 467	4 540	4 540	4 540
<b>Slewing</b>						
Slewing torque (ft-lbs)	20 873	20 873	20 873	20 873	20 873	20 873
Slewing angle (degrees)	415	415	415	415	415	415
<b>Dimensions</b>						
Height in folded position (in)	7' 5"	7' 5"	7' 5"	7' 5"	7' 5"	7' 5"
Width in folded position (in)	8' 2"	8' 2"	8' 2"	8' 2"	8' 2"	8' 2"
<b>Weights</b>						
Weight of crane w/o stabilizers (lbs)	3 627	3 957	4 332	4 905	5 214	5 479
Additional weight of hose & pipe kit (lbs)	183	183	231	258	258	258
Weight of stabilizers (lbs)	944	944	944	944	944	944
<b>Installation space</b>						
Installation space needed (in)	2' 10" - 3' 5"	3' 2" - 3' 9"	3' 1" - 3' 4"	2' 10" - 3' 5"	3' 2" - 3' 5"	3' 2" - 3' 4"



*Disclaimer. This table shows a few examples of models, and represents some of all options available. With the opportunity to configure your crane, we can provide you with a crane perfectly tailored to your needs. Please contact your local Hiab sales representative for more information on the variety of options we can offer. We reserve the right to make changes. Illustrations, drawings and data are not always in accordance with the latest version or standard model in production. The models in the pictures may present special equipment or colors.*

## BUILT TO PERFORM

Hiab (Nasdaq Helsinki: HIAB) is a leading provider of smart and sustainable on road load-handling solutions, committed to delivering the best customer experience every day with the most engaged people and partners. Hiab's premium equipment includes HIAB and EFFER loader cranes, MOFFETT and PRINCETON truck mounted forklifts, MULTILIFT skiploaders and hooklifts, GALFAB roll-off cable hoists, and WALTCO tail lifts, and the service brand HIPERFORM, a comprehensive suite of smart solutions that help maximize the life-cycle value of Hiab's equipment. As the industry pioneer, Hiab continues to make on road load-handling smarter, safer and more sustainable to build a better tomorrow.

[www.hiabgroup.com](http://www.hiabgroup.com)

