

TECHNICAL SPECIFICATIONS

X-HIDUO 072



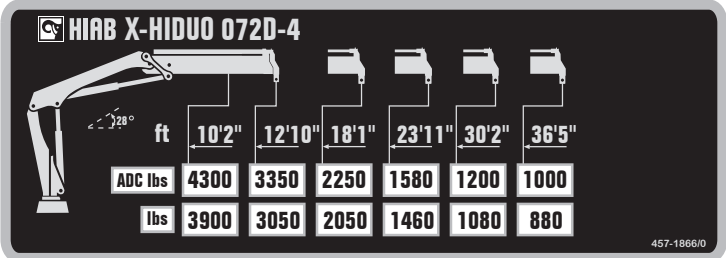
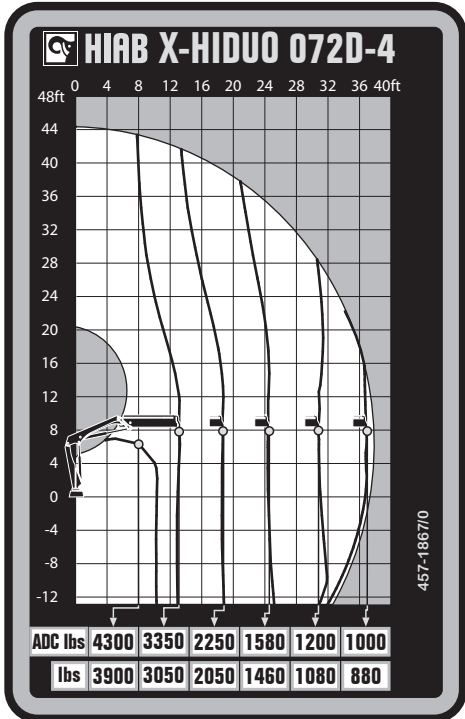
BUILT TO PERFORM



HIAB X-HIDUO 072

TECHNICAL SPECIFICATIONS

Technical Data	X-HIDUO 072 D-2	X-HIDUO 072 D-3	X-HIDUO 072 D-4
Lifting capacity			
Lifting capacity (ft-lbs)	47 204	44 991	42 779
Outreach			
Standard outreach (ft-lbs)	8' 2" - 5 600	9' 6" - 4 718	10' 2" - 4 277
	12' 10" - 3 660	13' 2" - 3 439	12' 10" - 3 351
	17' 9" - 2 602	18' 1" - 2 381	18' 1" - 2 249
	23' 8" - 1 940	23' 11" - 1 764	23' 11" - 1 587
	-	30' 6" - 1 367	30' 2" - 1 191
Outreach, hydraulic extensions (ft)	23' 11"	30' 6"	37' 1"
Oil and tank			
Rec OilFlow lo (gal/min)	8	8	8
Rec OilFlow hi (gal/min)	11	11	11
Work pressure (psi)	4 496	4 496	4 496
Slewing			
Slewing torque (ft-lbs)	6 240	6 240	6 240
Slewing angle (degrees)	410	410	410
Dimensions			
Height in folded position (in)	6' 3"	6' 3"	6' 3"
Width in folded position (in)	6' 7"	7' 1"	7' 1"
Weights			
Weight of crane w/o stabilizers (lbs)	1 918	2 094	2 249
Additional weight of hose & pipe kit (lbs)	132	132	132
Weight of stabilizers (lbs)	352	352	352
Installation space			
Installation space needed (in)	2' 2" - 2' 5"	2' 2" - 2' 5"	2' 2" - 2' 5"



Disclaimer. This table shows a few examples of models, and represents some of all options available. With the opportunity to configure your crane, we can provide you with a crane perfectly tailored to your needs. Please contact your local Hiab sales representative for more information on the variety of options we can offer. We reserve the right to make changes. Illustrations, drawings and data are not always in accordance with the latest version or standard model in production. The models in the pictures may present special equipment or colors.

BUILT TO PERFORM

Hiab (Nasdaq Helsinki: HIAB) is a leading provider of smart and sustainable on road load-handling solutions, committed to delivering the best customer experience every day with the most engaged people and partners. Hiab's premium equipment includes HIAB and EFFER loader cranes, MOFFETT and PRINCETON truck mounted forklifts, MULTILIFT skiploaders and hooklifts, GALFAB roll-off cable hoists, and WALTCO tail lifts, and the service brand HIPERFORM, a comprehensive suite of smart solutions that help maximize the life-cycle value of Hiab's equipment. As the industry pioneer, Hiab continues to make on road load-handling smarter, safer and more sustainable to build a better tomorrow.

www.hiabgroup.com

