

TECHNICAL SPECIFICATIONS
eX.162 HIPRO



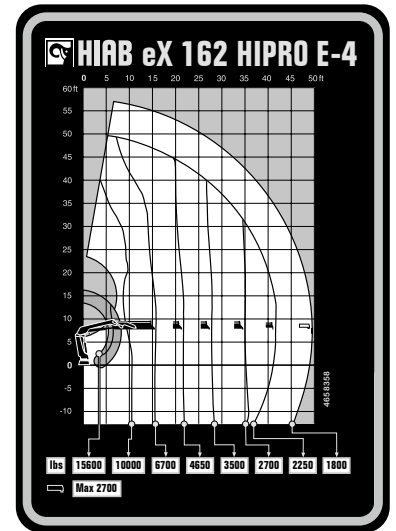
BUILT TO PERFORM



HIAB eX.162 HIPRO

TECHNICAL SPECIFICATIONS

Technical Data	eX.162 HiPro E-2	eX.162 HiPro E-3	eX.162 HiPro E-4	eX.162 HiPro E-5
Lifting capacity				
Lifting capacity (ft-lbs)	112 257	108 938	105 840	103 332
Outreach				
Standard outreach (ft-lbs)	10' 6" - 10 582	10' 6" - 10 362	10' 6" - 10 031	10' 6" - 9 811
	15' 5" - 7 275	15' 9" - 6 945	15' 9" - 6 724	16' 1" - 6 393
	21' 4" - 5 203	21' 8" - 4 894	21' 8" - 4 674	22' - 4 365
	27' 11" - 3 968	28' 3" - 3 660	27' 11" - 3 483	28' 3" - 3 219
	-	35' 1" - 2 910	34' 9" - 2 734	35' 1" - 2 469
	-	-	41' 8" - 2 249	42' - 1 984
	-	-	-	49' 2" - 1 675
Outreach, hydraulic extensions (ft)	28' 3"	35' 4"	42'	49' 6"
Oil and tank				
Rec OilFlow lo (gal/min)	18	18	18	18
Rec OilFlow hi (gal/min)	32	32	32	32
Work pressure (psi)	4 830	4 830	4 830	4 830
Slewing				
Slewing Torque (ft-lbs)	15 120	15 120	15 120	15 120
Slewing angle (degrees)	415	415	415	415
Dimensions				
Height in folded position (in)	7' 6"	7' 6"	7' 6"	7' 6"
Width in folded position (in)	8' 1"	8' 1"	8' 1"	8' 2"
Weights				
Weight of crane w/o stabilizers (lbs)	3 748	4 034	4 321	4 586
Additional weight of hose & pipe kit (lbs)	258	258	284	284
Weight of stabilizers (lbs)	844	844	844	844
Installation Space				
Installation space needed (in)	2' 9" - 5' 1"	3' - 5' 1"	2' 9" - 5' 2"	3' 1" - 5' 6"



This table shows a few examples of models, and represents some of all options available. With the opportunity to configure your crane, we can provide you with a crane perfectly tailored to your needs. Please contact your local dealer for more information on the variety of options we can offer.

Disclaimer. We reserve the right to make changes. Illustrations, drawings and data are not always in accordance with the latest version or standard model in production. The models in the pictures may present special equipment or colours.

BUILT TO PERFORM

Hiab is a leading provider of smart and sustainable load handling solutions. We are committed to delivering the best customer experience every day with the most engaged people and partners. Hiab's premium equipment includes HIAB, EFFER and ARGOS loader cranes, MOFFETT and PRINCETON truck mounted forklifts, LOGLIFT forestry cranes, JONSERED recycling cranes, MULTILIFT skiploaders and hooklifts, GALFAB roll-off cable hoists, and tail lifts under the ZEPRO, DEL and WALTCO brands. As the industry pioneer, Hiab continues to make load handling smarter, safer and more sustainable to build a better tomorrow. Hiab is part of Cargotec Corporation.

www.hiab.com

BD-eX.162HIPRO-EN-WW_240703 MET25-1855B

