

TECHNICAL SPECIFICATIONS

X-HIDUO 108



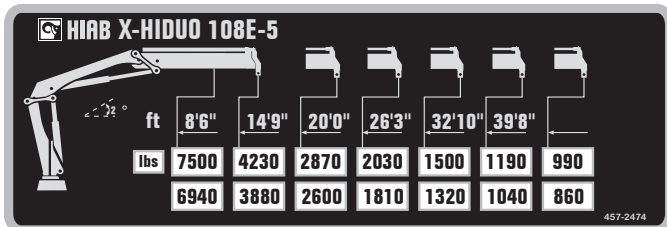
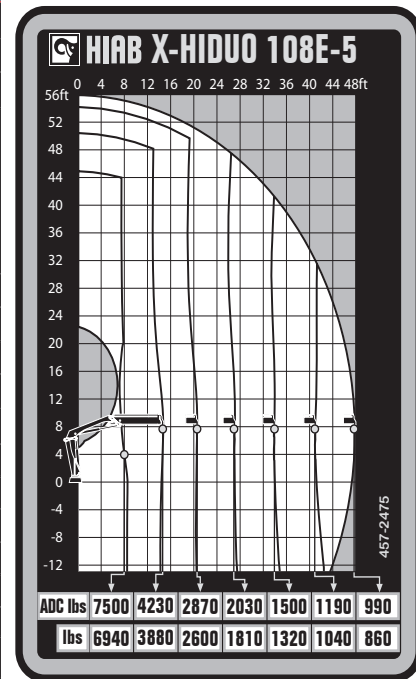
BUILT TO PERFORM



HIAB X-HIDUO 108

TECHNICAL SPECIFICATIONS

Technical Data	X-HIDUO 108 B-1	X-HIDUO 108 B-2	X-HIDUO 108 B-3	X-HIDUO 108 E-4	X-HIDUO 108 E-5
Lifting capacity					
Lifting capacity (ft-lbs)	71 544	68 593	66 381	65 643	62 693
Outreach					
Standard outreach (ft-lbs)	7' 3" - 9 590	8' 10" - 7 716	9' 10" - 6 834	8' 2" - 8 046	8' 6" - 7 496
	13' 5" - 5 335	13' 5" - 5 115	13' 9" - 4 806	14' 5" - 4 541	14' 9" - 4 233
	18' 8" - 3 836	18' 8" - 3 660	19' - 3 395	19' 8" - 3 131	20' - 2 866
	-	24' 11" - 2 734	24' 11" - 2 513	25' 11" - 2 249	26' 3" - 2 028
	-	-	31' 2" - 2 028	32' 6" - 1 720	32' 10" - 1 499
	-	-	-	39' 4" - 1 411	39' 8" - 1 191
	-	-	-	-	46' 7" - 992
Outreach, hydraulic extensions (ft)	19'	25' 7"	32' 2"	39' 8"	46' 11"
Oil and tank					
Rec OilFlow lo (gal/min)	12	12	12	12	12
Rec OilFlow hi (gal/min)	15	15	15	15	15
Work pressure (psi)	4 496	4 496	4 496	4 496	4 496
Slewing					
Slewing torque (ft-lbs)	7 892	7 892	7 892	7 892	7 892
Slewing angle (degrees)	406	406	406	406	406
Dimensions					
Height in folded position (in)	6' 11"	6' 11"	6' 11"	6' 11"	6' 11"
Width in folded position (in)	7'	7' 4"	7' 6"	7' 7"	7' 11"
Weights					
Weight of crane w/o stabilizers (lbs)	2 293	2 513	2 712	3 263	3 483
Additional weight of hose & pipe kit (lbs)	143	143	143	165	165
Weight of stabilizers (lbs)	668	668	668	668	668
Installation space					
Installation space needed (in)	2' 6" - 2' 8"	2' 6" - 2' 8"	2' 6" - 2' 11"	2' 6" - 2' 10"	2' 8" - 3' 1"



Disclaimer. This table shows a few examples of models, and represents some of all options available. With the opportunity to configure your crane, we can provide you with a crane perfectly tailored to your needs. Please contact your local Hiab sales representative for more information on the variety of options we can offer. We reserve the right to make changes. Illustrations, drawings and data are not always in accordance with the latest version or standard model in production. The models in the pictures may present special equipment or colors.

BUILT TO PERFORM

Hiab (Nasdaq Helsinki: HIAB) is a leading provider of smart and sustainable on road load-handling solutions, committed to delivering the best customer experience every day with the most engaged people and partners. Hiab's premium equipment includes HIAB and EFFER loader cranes, MOFFETT and PRINCETON truck mounted forklifts, MULTILIFT skiploaders and hooklifts, GALFAB roll-off cable hoists, and WALTCO tail lifts, and the service brand HIPERFORM, a comprehensive suite of smart solutions that help maximize the life-cycle value of Hiab's equipment. As the industry pioneer, Hiab continues to make on road load-handling smarter, safer and more sustainable to build a better tomorrow.

www.hiabgroup.com

