

# TECHNICAL SPECIFICATIONS

# X-DUO 078



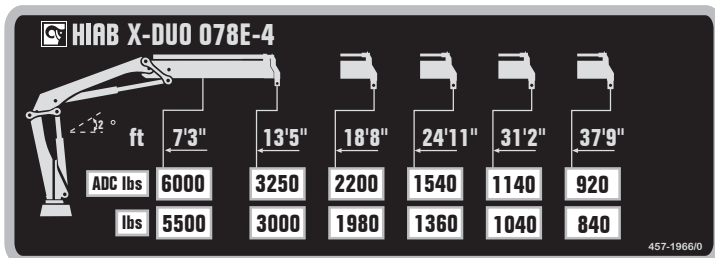
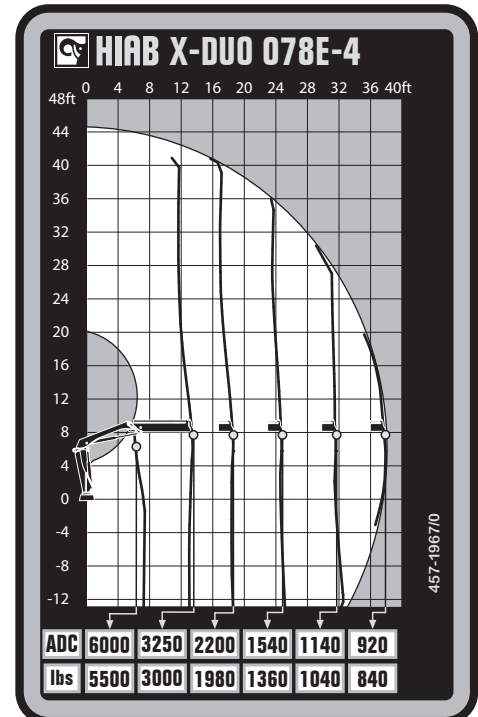
**BUILT TO PERFORM**



# HIAB X-DUO 078

## TECHNICAL SPECIFICATIONS

Technical Data	X-DUO 078 B-1	X-DUO 078 B-2	X-DUO 078 B-3	X-DUO 078 E-4
<b>Lifting capacity</b>				
Lifting capacity (ft-lbs)	50 892	47 942	46 466	44 254
<b>Outreach</b>				
Standard outreach (ft-lbs)	8' 6" - 5 842	9' 2" - 5 291	9' 6" - 4 850	7' 3" - 5 953
	12' 6" - 4 057	12' 6" - 3 880	12' 6" - 3 704	13' 5" - 3 263
	17' 9" - 2 866	17' 9" - 2 690	17' 9" - 2 513	18' 8" - 2 205
	-	23' 8" - 1 984	23' 11" - 1 764	24' 11" - 1 543
	-	-	30' 2" - 1 411	31' 2" - 1 146
Outreach, hydraulic extensions (ft)	18' 8"	24' 11"	31' 6"	38' 1"
<b>Oil and tank</b>				
Rec OilFlow lo (gal/min)	9	9	9	9
Rec OilFlow hi (gal/min)	11	11	11	11
Work pressure (psi)	4 192	4 192	4 192	4 192
<b>Slewing</b>				
Slewing torque (ft-lbs)	7 892	7 892	7 892	7 892
Slewing angle (degrees)	406	406	406	406
<b>Dimensions</b>				
Height in folded position (in)	6' 3"	6' 3"	6' 3"	6' 3"
Width in folded position (in)	6' 11"	7' 2"	7' 2"	7' 8"
<b>Weights</b>				
Weight of crane w/o stabilizers (lbs)	1 929	2 139	2 337	2 513
Additional weight of hose & pipe kit (lbs)	143	143	143	165
Weight of stabilizers (lbs)	668	668	668	668
<b>Installation space</b>				
Installation space needed (in)	2' 6" - 2' 7"	2' 3" - 2' 7"	2' 5" - 2' 10"	2' 6" - 2' 9"



*Disclaimer. This table shows a few examples of models, and represents some of all options available. With the opportunity to configure your crane, we can provide you with a crane perfectly tailored to your needs. Please contact your local Hiab sales representative for more information on the variety of options we can offer. We reserve the right to make changes. Illustrations, drawings and data are not always in accordance with the latest version or standard model in production. The models in the pictures may present special equipment or colors.*

## BUILT TO PERFORM

Hiab (Nasdaq Helsinki: HIAB) is a leading provider of smart and sustainable on road load-handling solutions, committed to delivering the best customer experience every day with the most engaged people and partners. Hiab's premium equipment includes HIAB and EFFER loader cranes, MOFFETT and PRINCETON truck mounted forklifts, MULTILIFT skiploaders and hooklifts, GALFAB roll-off cable hoists, and WALTCO tail lifts, and the service brand HIPERFORM, a comprehensive suite of smart solutions that help maximize the life-cycle value of Hiab's equipment. As the industry pioneer, Hiab continues to make on road load-handling smarter, safer and more sustainable to build a better tomorrow.

[www.hiabgroup.com](http://www.hiabgroup.com)

