

TECHNICAL SPECIFICATIONS
ix.158 HIDUO



BUILT TO PERFORM



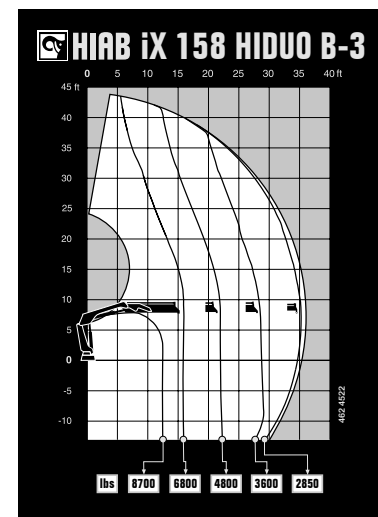
HIAB iX.158 HIDUO

TECHNICAL SPECIFICATIONS

Technical Data	IX.158 HiDuo B-2	IX.158 HiDuo B-3	IX.158 HiDuo E-4	IX.158 HiDuo E-5
Lifting Capacity				
Lifting capacity (ft-lb)	111 372	108 422	101 415	98 981
Outreach				
Standard Outreach (ft-lbs)	11' 10" - 9 480	12' 6" - 8 708	10' 6" - 9 700	10' 6" - 9 370
	15' 9" - 7 055	15' 9" - 6 724	15' 9" - 6 393	16' 1" - 6 063
	21' 8" - 5 071	21' 8" - 4 806	21' 8" - 4 453	22' - 4 145
	27' 11" - 3 924	28' 3" - 3 572	27' 11" - 3 307	28' 3" - 3 042
	-	35' 1" - 2 866	34' 9" - 2 602	35' 1" - 2 337
	-	-	41' 8" - 2 139	42' - 1 874
Outreach, hydraulic extensions (ft)	28' 11"	36' 1"	42'	49' 6"
Oil and Tank				
Rec OilFlow lo (gal/min)	12	12	12	12
Rec OilFlow hi (gal/min)	15	15	15	15
Work pressure (psi)	4 656	4 656	4 656	4 656
Slewing				
Slewing Torque (ft-lbs)	15 931	15 931	15 931	15 931
Slewing angle (degrees)	415	415	415	415
Dimensions				
Height in folded position (in)	7' 5"	7' 5"	7' 6"	7' 6"
Width in folded position (in)	8' 1"	8' 2"	8' 1"	8' 2"
Weights				
Weight of crane w/o stabilizers (lbs)	3 417	3 704	4 211	4 475
Additional weight of hose & pipe kit (lbs)	258	258	284	284
Weight of stabilizers (lbs)	844	844	844	844
Installation Space				
Installation space needed (in)	2' 9" - 5' 2"	3' 1" - 5' 2"	2' 9" - 5' 2"	3' 1" - 5' 6"

This table shows a few examples of models, and represents some of all options available. With the opportunity to configure your crane, we can provide you with a crane perfectly tailored to your needs. Please contact your local dealer for more information on the variety of options we can offer.

Disclaimer. We reserve the right to make changes. Illustrations, drawings and data are not always in accordance with the latest version or standard model in production. The models in the pictures may present special equipment or colors.



BUILT TO PERFORM

Hiab is a leading provider of smart and sustainable load handling solutions. We are committed to delivering the best customer experience every day with the most engaged people and partners. Hiab's premium equipment includes HIAB, EFFER and ARGOS loader cranes, MOFFETT and PRINCETON truck mounted forklifts, LOGLIFT forestry cranes, JONSERED recycling cranes, MULTILIFT skiploaders and hooklifts, GALFAB roll-off cable hoists, and tail lifts under the ZEPRO, DEL and WALTCO brands. As the industry pioneer, Hiab continues to make load handling smarter, safer and more sustainable to build a better tomorrow. Hiab is part of Cargotec Corporation.

www.hiab.com

