

EFFER iQ.2255 HP

Built to take you further





Boost productivity with superior reach and high flexibility

The EFFER iQ.2255 HP is a 200 tonne-metre loader crane built for the most demanding lifts. Despite its heavy-duty performance, its relatively low weight allows for installation on a wide range of trucks while preserving payload capacity. This means you can move heavier loads efficiently, with greater flexibility and lower operating costs.

With up to 55 m vertical reach and 48 m horizontal outreach with the crane and JIB, the EFFER iQ.2255 HP provides outstanding coverage across large and complex jobsites. The advanced KJ system, featuring two additional extensions, increases flexibility and lifting height, achieving approximately 34 m articulation height from the ground.

For ultimate vertical performance, the optional mini-JIB (030X) raises the articulation height to an impressive 49 m, making it possible to lift over obstacles and work effectively in confined areas.

This combination of reach, height, and manoeuvrability makes the crane ideal for dense urban environments, complex industrial sites, and major infrastructure or energy projects where space is limited but performance can't be compromised.

At the core of this performance is the V10-Force boom, with its unique 10-sided profile engineered for maximum strength and vertical reach. The advanced SPACEvo control system technology turns raw power into smooth, safe, and precise operation, while the lightweight CombiDrive 4 remote keeps operators comfortable and in full control throughout the workday.

Powerful, precise, and highly versatile, the EFFER iQ.2255 HP is a partner you can count on for the jobs that demand the most.

Engineered to work as one

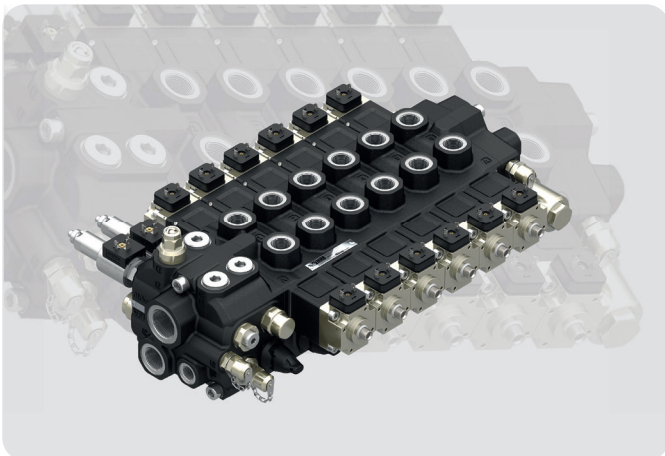


SPACEevo

The SPACEevo control system technology is the brain inside the crane, improving productivity, safety, and efficiency through intuitive controls, advanced sensor-based safety systems, and optimised energy use. The precision and rapid movements save time and reduce the risk of costly damage.

The open, modular nature of SPACEevo allows for the addition of new functionalities and features over time, helping to future-proof your crane. This ensures the EFFER IQ.2255 HP has a long operating life and a higher residual value.

The dual-core processor, sensors, actuators, and new harness design ensure the crane works in all conditions, giving the crane the power it needs while increasing reliability and durability for completing the most difficult jobs.



Olsbergs V200 hydraulic control valves

Olsbergs hydraulic control valves are designed specifically for loader cranes – and have been developed for that purpose for over 40 years. Unique to the Olsbergs V200 control valve is the electro-hydraulic actuator with position feedback, called the P8, which makes it possible to achieve extremely precise control of the valve regardless of flow forces. These solutions are essential for the smooth and accurate operation of Hiab's truck-mounted loader cranes.

Key benefits include:

- Smooth, simultaneous movements for multiple crane functions
- Improved energy efficiency thanks to wide internal channels that reduce pressure drop and heat build-up
- High flow capacity of up to 300 litres per minute means consistent performance even in the most demanding tasks
- Precise control and multi-function handling that make work more efficient and productive, whatever the job
- Optimised integration designed to work perfectly with SPACEevo and variable pumps, enhancing performance
- Extensive testing and the highest standards of engineering mean reliability, safety, and durability

Power meets precision

Innovative boom design and intelligent remote technology give you outstanding vertical lifting performance with complete operator control.



CombiDrive 4

Weighing only 2.2 kg with a long battery life of up to 9.5 hours, the ergonomic CombiDrive 4 remote is easy to handle during long shifts and comfortable to use even when wearing gloves. The eight-function controller with haptic feedback and the high-resolution colour tri-display enable precise operation and full focus on the task at hand.

Safety is built in with integrated lighting, as well as Confirmed View sensors that track the operator's position, hazard lights that alert the surrounding environment, and puddle lights for improved visibility. If the remote control is dropped, communication with the truck is immediately interrupted, and operation can only resume once the remote is restarted, preventing any unintended movement. The smart, customisable CombiDrive 4 remote supports skilled operators with intelligent crane management that enhances precision and control.

V10-Force boom

The V10-Force boom delivers benchmark vertical lifting performance comparable to larger cranes. Its unique ten-sided profile provides exceptional vertical reach with minimal side deviation and oscillations, allowing you to install higher-capacity fly jibs while maintaining boom stiffness even in extreme vertical positions.

This innovative design contributes to a best-in-class power-to-weight ratio, giving you the lifting capability you need while leaving more room for payload and keeping the crane agile enough to work in tight spaces.



Automatic Speed Control (ASC)

This feature, unique to Hiab, gives an increase in lifting capacity of up to 10%, all in one smooth, continuous motion. It engages automatically as you reach the regular capacity limit, meaning that you can still lift the load where other cranes would have come to a complete stop. To compensate for the capacity boost, the speed of the inner and outer boom is slightly reduced, but capacity ceiling, safety, and efficiency are significantly increased.



Automatic Duty Control (ADC)

Our patented ADC function is a fully automatic system designed to optimise crane performance in suspended load applications. By intelligently managing duty parameters and dynamic load factors, ADC enables up to 10% higher effective utilisation within approved operating conditions – without increasing structural stress or accelerating fatigue. This results in greater operational flexibility, reduced long-term maintenance demands, and improved productivity during high-demand lifts – all while maintaining compliance with the crane's certified load ratings.

VSL

Variable Stability Logic (VSL)

The VSL system continuously monitors crane position, load, and stabiliser deployment to calculate available lifting capacity in real time. By adapting to the actual working conditions, VSL maximises safe performance while allowing operation in confined spaces with partial stabiliser extension. The result is increased efficiency, enhanced safety, and optimised lifting capability on every job.

Boom Deployment Assistance (BDA)

The BDA prevents the operator from moving the second boom or extensions in wrong directions during the folding or unfolding operation, removing the risk of unwanted damage from manual handling.

Built to last

Engineering excellence, industry-leading workmanship, and durable, innovative materials give you long-term peace of mind.

THREE YEARS warranty on main steel structural components.

ONE YEAR standard warranty on all other components, excluding wear and tear – extendable to two years or 2,000 working hours.



Optional

Centralised greasing system

The main pins on the crane boom can easily be greased from one safe and comfortable place. The operator saves time, stays safer, and doesn't have to climb around the crane to grease each point – everything can be done quickly from one easy location.

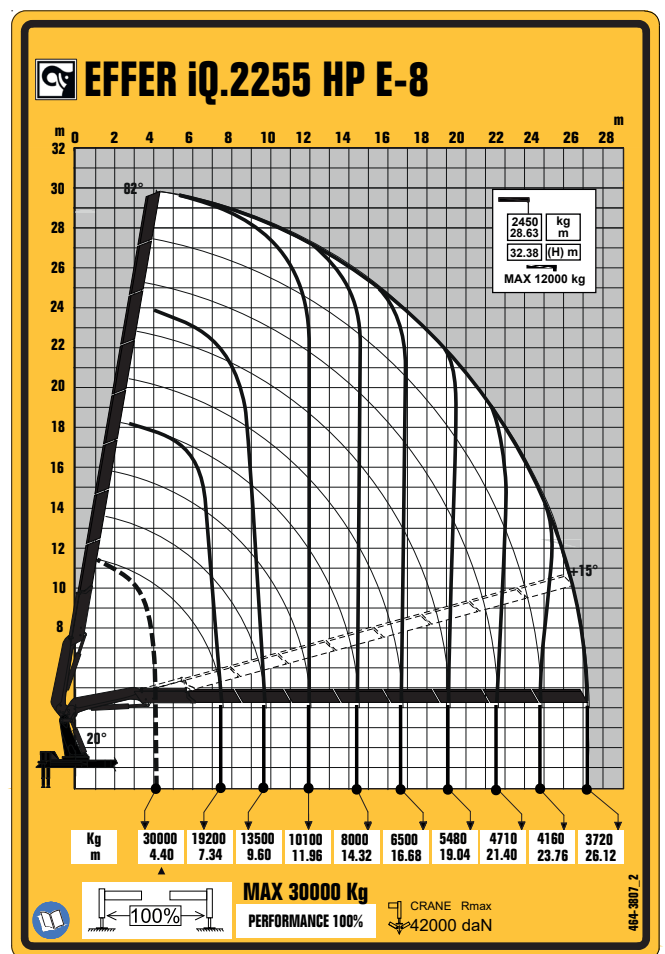
Optional

Integrated pulley system

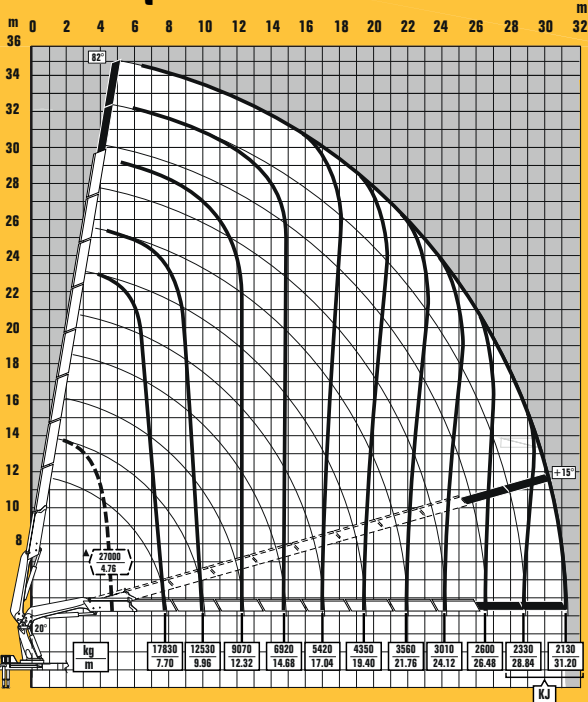
EFFER's integrated pulley system uses a smooth wind-and-drive motion to deliver powerful, effortless lifting with maximum precision. It avoids the need to disassemble the pulleys and rope from the crane. All parts are fully integrated, even when the crane is folded. That saves time, increases operator safety, and reduces truck space needed for the accessories. For the operator, it means smoother, easier, and more controlled lifting with less manual adjustment and less effort.

Technical specifications

Technical data	E-8	E-8 KJ 2S	E-8 JIB 280Q-6	E-8 JIB 320Q-6
Lifting capacity (kNm)	1383	1383	1383	1383
Outreach, hydraulic extensions (m)	26.1	31.2	44.6	45.4
Outreach, with manual extension (m)	28.6	-	47.1	48.0
Height in folded position (mm)	2831	2831	2867	2867
Oil flow	230 l/min	230 l/min	230 l/min	230 l/min



EFFER iQ.2255 HP E-8 KJ



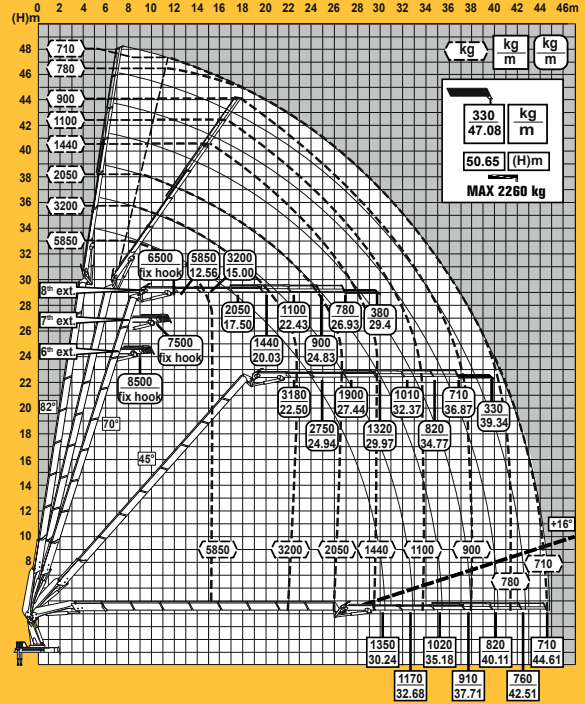
CRANE Rmax
42000 daN

PERFORMANCE 100%

▲ MAX 27000 Kg

464-3812

EFFER iQ. 2255 HP E-8 JIB 280Q-6



MAX 5850 Kg

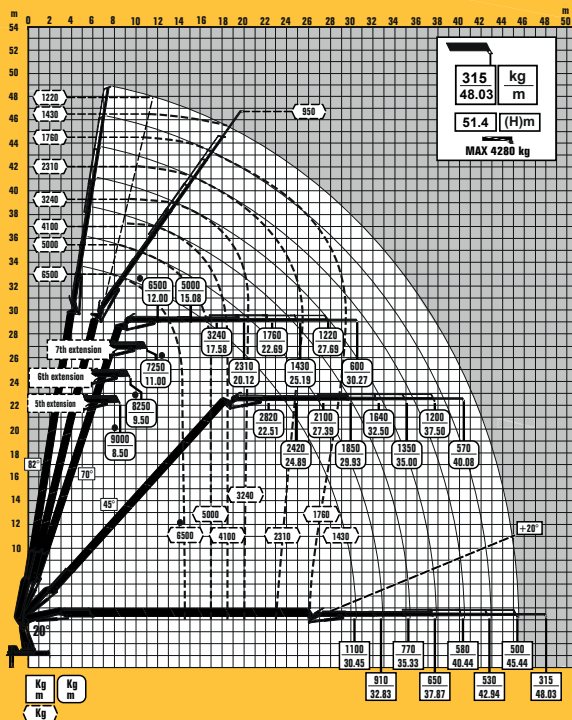
CRANE Rmax
42000 daN

PERFORMANCE 100%

Crane extension	FIX HOOK	MAX
8th ext	6500 kg	
7th ext	7500 kg	
6th ext	8500 kg	

464-3811_02

EFFER iQ.2255 HP E-8 JIB 320Q-6 (1/2)



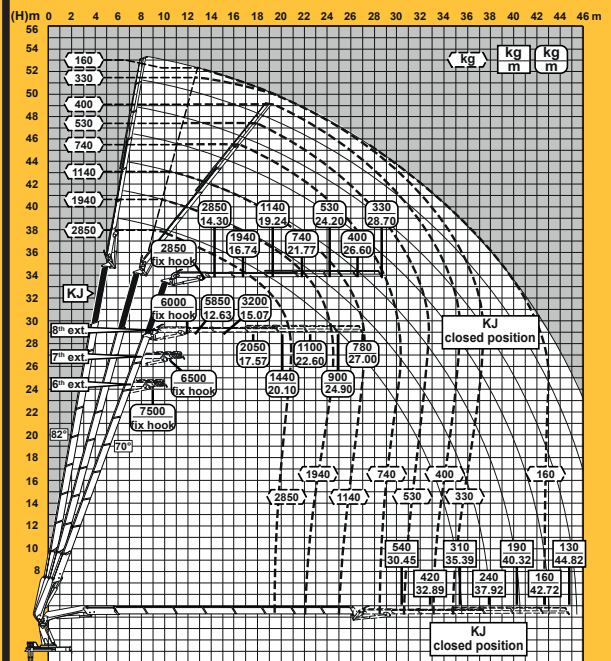
CRANE Rmax
42000 daN

PERFORMANCE 100%

Crane extension	MAX
8th ext.	6500 kg
7th ext.	7250 kg
6th ext.	8250 kg
5th ext.	9000 kg

464-3815

EFFER iQ.2255 HP E-8 KJ JIB 280Q-6



CRANE Rmax
42000 daN

PERFORMANCE 100%

Crane extension	MAX	Crane extension	MAX
KJ	2850 Kg	KJ	2850 Kg
8th ext	6500 kg	8th ext	5550 kg
7th ext	6500 kg	7th ext	5550 kg
6th ext	7500 kg	6th ext	5550 kg

464-3813_02



Boost productivity and flexibility with the right accessories

Extend the versatility of your crane by adding one or more tools from the wide range of our accessories. Manufactured to the highest standards, they enhance functionality and performance.



Pallet fork

Handling loads with a pallet fork has many advantages. Since the load is palletised and lifted from underneath, it's possible to lift many different types of loads. A pallet fork is also less expensive than a brick grab, which is the main alternative.



Brick grab

Using a brick grab offers many benefits, including speedier handling of your loads. The load doesn't have to be palletised, and it can be handled even in awkward positions where space is limited. Hiab brick grabs are extremely versatile and robust.



Clamshell buckets

We have a wide range of clamshell buckets available for your loader crane, where the right choice depends on your current operations – and your future plans.

Options range from narrow digging buckets for cable work, to versatile midsize buckets for lifting and digging, and large-volume scooping buckets for moving bulk material. Paired with the right rotator and accessories, your bucket becomes a complete solution built for maximum daily productivity.

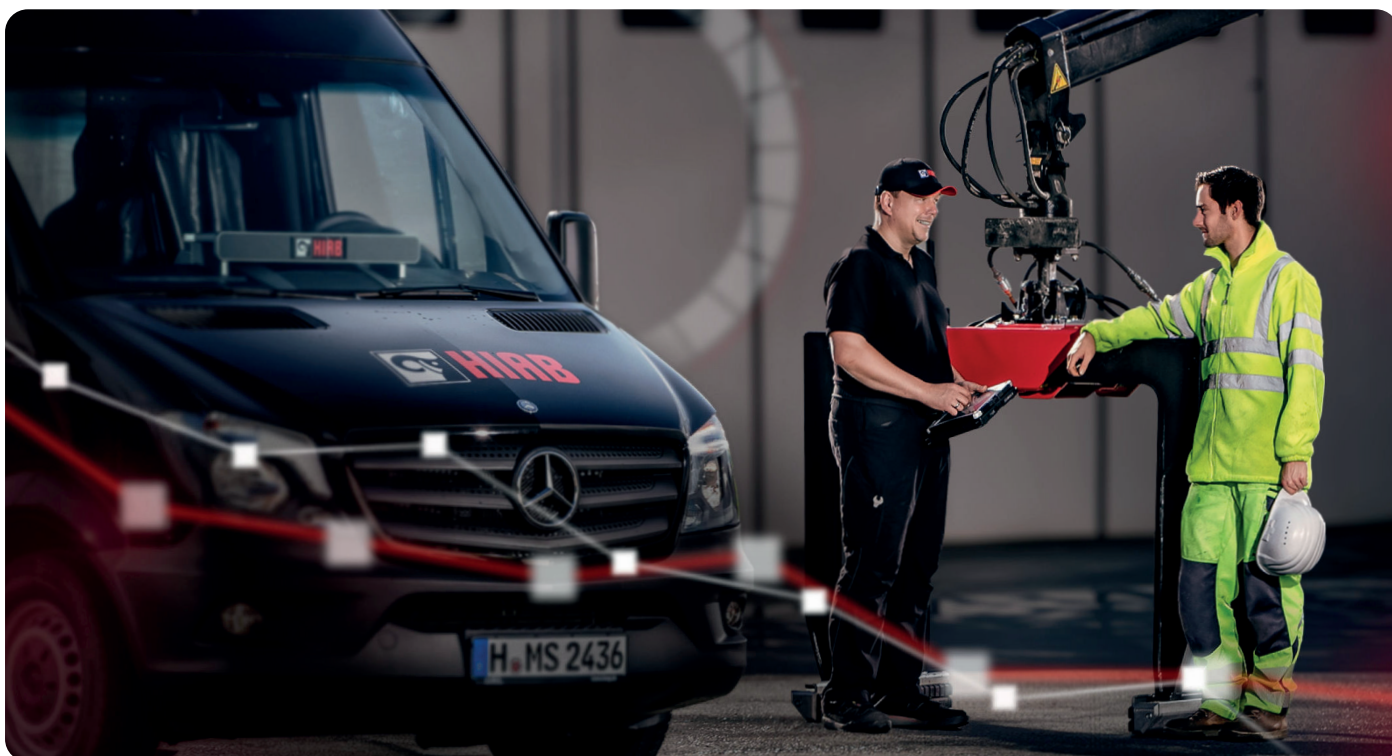
MEWP personnel baskets

Our MEWP personnel baskets are compliant with the latest EN280:2022-1 safety standards, providing a safe and stable solution for personnel lifting. Available in Gravity Leveling or Hydraulic Self-Leveling versions, the baskets automatically maintain a balanced position for enhanced safety and operator comfort – even in changing conditions.

Built for durability and reliable performance at height, they are ideal for maintenance applications and fully compatible as an accessory option with MEWP-prepared Hiab cranes equipped with the SPACEevo control system.



[Explore our wide range of loader crane accessories](#)



Services that keep your equipment working



Your customers depend on you. To deliver every day, your equipment must work reliably. HiPerform is Hiab's complete service offering. It brings together maintenance, connected equipment data, and operator training in one package. The goal is simple: fewer breakdowns, better planning, safer operators, and longer equipment life. HiPerform includes three parts: ProCare™, HiConnect™, and HiSkill™.

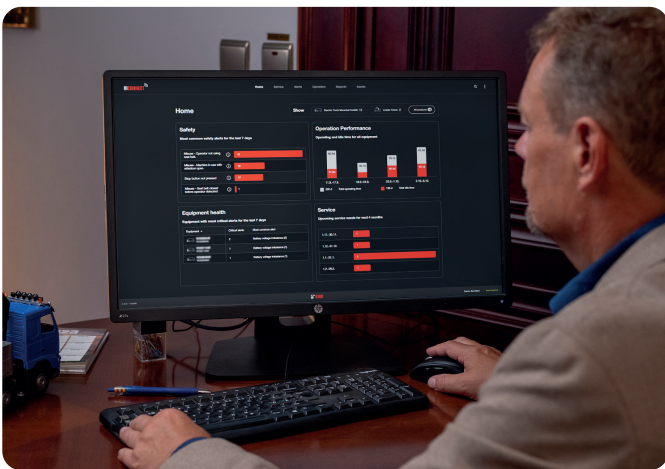
Planned service with fixed costs

ProCare™ is a preventive service agreement for your Hiab equipment. It covers regular maintenance and inspections for a fixed fee. With ProCare™, your equipment is serviced by trained technicians at the right intervals. This helps prevent unexpected breakdowns and costly repairs. You know your service costs in advance and can plan your business with fewer surprises. You choose the service level that fits your operation – we take care of the maintenance.



Know how your equipment is used

HiConnect™ connects your loader crane and gives you access to useful equipment data. You can see how the crane is being used, check service history, and follow upcoming maintenance needs. Because the information is based on actual usage, it's easier to plan service at the right time and reduce unnecessary downtime. With HiConnect™, you have a better overview and better control of your fleet.



Train operators in a safe environment

HiSkill™ is a training simulator that helps operators practice crane operation safely. It combines virtual reality with real controls so operators can train without risk to people, loads, or equipment.

Operators can practice different lifting situations, improve their skills, and gain confidence before working on real jobs. Better training helps reduce accidents, avoid damage, and improve everyday performance.



BUILT TO PERFORM



Hiab (Nasdaq Helsinki: HIAB) is a leading provider of smart and sustainable on-road load handling solutions, committed to delivering the best customer experience every day with the most engaged people and partners. Hiab's premium equipment includes HIAB, EFFER, ARGOS and ING loader cranes, MOFFETT and PRINCETON truck mounted forklifts, LOGLIFT forestry cranes, JONSERED recycling cranes, MULTILIFT skiploaders and hooklifts, GALFAB roll-off cable hoists, ZEPRO, DEL and WALTCO tail lifts, and the service brand HIPERFORM, a comprehensive suite of smart solutions that help maximise the life-cycle value of Hiab's equipment.

www.hiab.com