

TECHNICAL SPECIFICATIONS
ix.228 HIDUO



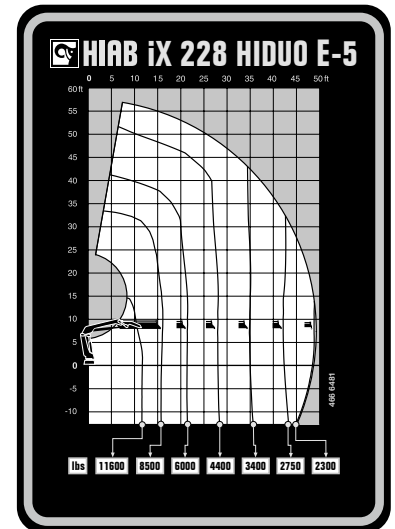
BUILT TO PERFORM



HIAB iX.228 HIDUO

TECHNICAL SPECIFICATIONS

Technical Data	iX.228 HiDuo B-3	iX.228 HiDuo B-4	iX.228 HiDuo E-5	iX.228 HiDuo E-6
Lifting capacity				
Lifting capacity (ft-lbs)	143 603	137 555	137 260	134 605
Outreach				
Standard outreach (ft-lbs)	11' 6" - 12 566	11' 6" - 12 125	11' 10" - 11 684	11' 10" - 11 464
	15' 5" - 9 149	15' 5" - 8 929	16' 1" - 8 488	16' 1" - 8 378
	21' - 6 614	21' - 6 283	21' 8" - 6 063	22' - 5 732
	27' 7" - 4 938	27' 7" - 4 630	28' 3" - 4 409	28' 3" - 4 145
	34' 5" - 3 924	34' 5" - 3 616	35' 1" - 3 395	34' 9" - 3 175
	-	41' 4" - 2 998	42' - 2 734	41' 8" - 2 557
	-	-	49' 2" - 2 337	48' 11" - 2 094
Outreach, hydraulic extensions (ft)	35' 6"	42' 5"	49' 6"	56' 10"
Oil and tank				
Rec OilFlow lo (gal/min)	17	17	17	17
Rec OilFlow hi (gal/min)	20	20	20	20
Work pressure (psi)	4 772	4 772	4 772	4 772
Slewing				
Slewing Torque (ft-lbs)	20 873	20 873	20 873	20 873
Slewing angle (degrees)	415	415	415	415
Dimensions				
Height in folded position (in)	7' 5"	7' 5"	7' 5"	7' 5"
Width in folded position (in)	8' 1"	8' 1"	8' 2"	8' 2"
Weights				
Weight of crane w/o stabilizers (lbs)	4 552	4 861	5 390	5 677
Additional weight of hose & pipe kit (lbs)	159	233	236	234
Weight of stabilizers (lbs)	944	944	944	944
Installation Space				
Installation space needed (in)	3' 1" - 3' 5"	3' 1" - 3' 8"	3' 3" - 3' 6"	3' 3" - 3' 7"



This table shows a few examples of models, and represents some of all options available. With the opportunity to configure your crane, we can provide you with a crane perfectly tailored to your needs. Please contact your local dealer for more information on the variety of options we can offer.

Disclaimer. We reserve the right to make changes. Illustrations, drawings and data are not always in accordance with the latest version or standard model in production. The models in the pictures may present special equipment or colours.

BUILT TO PERFORM

Hiab is a leading provider of smart and sustainable load handling solutions. We are committed to delivering the best customer experience every day with the most engaged people and partners. Hiab's premium equipment includes HIAB, EFFER and ARGOS loader cranes, MOFFETT and PRINCETON truck mounted forklifts, LOGLIFT forestry cranes, JONSERED recycling cranes, MULTILIFT skiploaders and hooklifts, GALFAB roll-off cable hoists, and tail lifts under the ZEPRO, DEL and WALTCO brands. As the industry pioneer, Hiab continues to make load handling smarter, safer and more sustainable to build a better tomorrow. Hiab is part of Cargotec Corporation.

www.hiab.com

BD-iX.228HIDUO-EN-WW_240704 MET25-1855B

