

EFFER iQ.1000 HP

Serious power with real reach





Maximise payload and profitability with outstanding vertical reach

With the EFFER iQ.1000 HP, you get the capacity of larger cranes with class-leading vertical performance in a compact size, making it ideal for heavy construction work in tight urban spaces.

Super-heavy building materials must often be delivered at extremely high heights, but there is little space for cranes with the required power. That's the reality of urban lifting. Does it seem like an impossible equation? It's not.

The EFFER iQ.1000 HP 90 tonne-metre crane changes the game. Despite its compact footprint, it delivers vertical lifting performance comparable to larger cranes, offering higher reach and lower total vehicle weight, which allows for installation on smaller trucks and increases payload capacity. This enables you to do more with less, ultimately lowering your costs.

As the first crane in its class to feature a nine-boom structure with six JIB extensions, the EFFER iQ.1000 HP offers unmatched vertical reach of up to 38.5 m (42.8 m with manual extensions). You can also combine JIBs of different sizes, ranging from standard to heavy-duty, to suit your needs.

At the core of this performance is the V10-Force boom. Its unique 10-sided profile and pioneering 83° angle provide exceptional vertical reach, allowing for precision in tight spaces which makes it possible to work closer to buildings.

SPACEevo control system technology and Olsbergs hydraulic control valves are engineered to work together seamlessly, delivering smooth, precise, and safe operation. The lightweight, ergonomic CombiDrive 4 remote control keeps operators comfortable and in full control throughout the workday.

Whether you're in construction, logistics, or crane rental, the EFFER iQ.1000 HP is the colleague you can trust to tackle the toughest urban lifting challenges while maximising payload and profitability.

Engineered to work as one

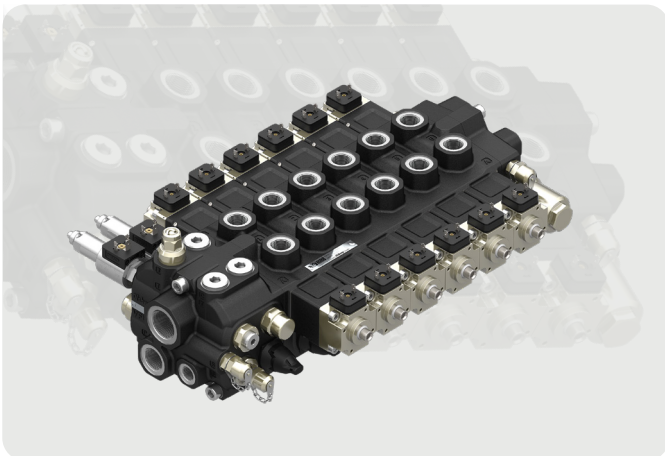


SPACEevo

The SPACEevo control system technology is the brain inside the crane, improving productivity, safety, and efficiency through intuitive controls, advanced sensor-based safety systems, and optimised energy use. The precision and rapid movements save time and reduce the risk of costly damage.

The open, modular nature of SPACEevo allows for the addition of new functionalities and features over time, helping to future-proof your crane. This ensures the EFFER iQ.1000 HP has a long operating life and a higher residual value.

The dual-core processor, sensors, actuators, and new harness design ensure the crane works in all conditions, giving the crane the power it needs while increasing reliability and durability for completing the most difficult jobs.



Olsbergs V200 hydraulic control valves

Olsbergs hydraulic control valves are designed specifically for loader cranes – and have been developed for that purpose for over 40 years. Unique to the Olsbergs V200 control valve is the electro-hydraulic actuator with position feedback, called the P8, which makes it possible to achieve extremely precise control of the valve regardless of flow forces. These solutions are essential for the smooth and accurate operation of Hiab's truck-mounted loader cranes.

Key benefits include:

- Smooth, simultaneous movements for multiple crane functions
- Improved energy efficiency thanks to wide internal channels that reduce pressure drop and heat build-up
- High flow capacity of up to 300 litres per minute means consistent performance even in the most demanding tasks
- Precise control and multi-function handling that make work more efficient and productive, whatever the job
- Optimised integration designed to work perfectly with SPACEevo and variable pumps, enhancing performance
- Extensive testing and the highest standards of engineering mean reliability, safety, and durability

Power meets precision

Innovative boom design and intelligent remote technology give you outstanding vertical lifting performance with complete operator control.



CombiDrive 4

Weighing only 2.2 kg with a long battery life of up to 9.5 hours, the ergonomic CombiDrive 4 remote is easy to handle during long shifts and comfortable to use even when wearing gloves. The eight-function controller with haptic feedback and the high-resolution colour tri-display enable precise operation and full focus on the task at hand.

Safety is built in with integrated lighting, as well as Confirmed View sensors that track the operator's position, hazard lights that alert the surrounding environment, and puddle lights for improved visibility. If the remote control is dropped, communication with the truck is immediately interrupted, and operation can only resume once the remote is restarted, preventing any unintended movement. The smart, customisable CombiDrive 4 remote supports skilled operators with intelligent crane management that enhances precision and control.

V10-Force boom

The V10-Force boom delivers benchmark vertical lifting performance comparable to larger cranes. Its unique ten-sided profile provides exceptional vertical reach with minimal side deviation and oscillations, allowing you to install higher-capacity fly jibs while maintaining boom stiffness even in extreme vertical positions. Thanks to the pioneering 83° vertical angle, you can come closer to buildings and increase precision.

With its innovative design, the V10-Force boom contributes to a best-in-class power-to-weight ratio, giving you the lifting capability you need while leaving more room for payload and keeping the crane agile enough to work in tight spaces.



Load Stability System for vertical movements (LSS-V)

LSS automatically compensates for unintentionally excessive lever movement in vertical operations, making crane operation faster and smoother while protecting the cargo, the crane, and the surroundings against potential damage.



Automatic Duty Control (ADC)

Our patented ADC function is a fully automatic system designed to optimise crane performance in suspended load applications. By intelligently managing duty parameters and dynamic load factors, ADC enables up to 10% higher effective utilisation within approved operating conditions – without increasing structural stress or accelerating fatigue. This results in greater operational flexibility, reduced long-term maintenance demands, and improved productivity during high-demand lifts – all while maintaining compliance with the crane's certified load ratings.



Optional

Engine Control

Engine Control gives crane operators the ability to start, stop, and adjust the truck's engine remotely, directly from the CombiDrive 4 remote control. It's a smart feature designed to reduce idle time, fuel use, and environmental impact – all while improving operational convenience.

The Automatic Start/Stop system ensures the engine runs only when it's needed, while the Dynamic RPM Adjustment adjusts the truck engine RPM based on real-time crane activity, using the precise amount of power required for each task. Save on fuel, reduce emissions, and extend the life of your engine, without stepping out of position.

See how Engine Control gives you smarter power



Variable Stability Logic Plus (VSL+)

VSL+ is a safety system that maximises capacity by calculating stability according to the position of the stabiliser legs and the total weight of the truck. Accounting for the true load, it can provide significantly more lifting capacity when it really matters.



Automatic Speed Control (ASC)

This feature, unique to Hiab, gives an increase in lifting capacity of up to 10%, all in one smooth, continuous motion. It engages automatically as you reach the regular capacity limit, meaning that you can still lift the load where other cranes would have come to a complete stop. To compensate for the capacity boost, the speed of the inner and outer boom is slightly reduced, but capacity ceiling, safety, and efficiency are significantly increased.

Multipower JIB

The Multipower JIB performance allows you to keep the maximum lifting capability at each of the extension's level steps, even from the sixth to the ninth, whereas typically the combination of the main boom and JIB partly loses their lifting power.

Boom Deployment Assistance (BDA)

The BDA prevents the operator from moving the second boom or extensions in wrong directions during the folding or unfolding operation, removing the risk of unwanted damage from manual handling.

Built to last

Engineering excellence, industry-leading workmanship, and durable, innovative materials give you long-term peace of mind.

THREE YEARS warranty on main steel structural components.

ONE YEAR standard warranty on all other components, excluding wear and tear – extendable to two years or 2,000 working hours.



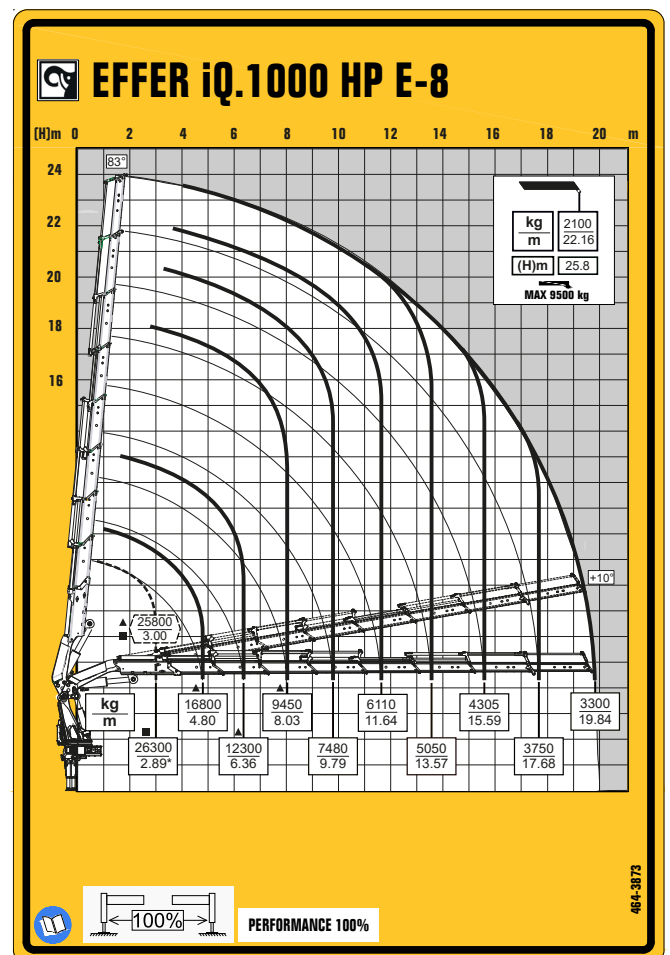
Optional

Integrated pulley system

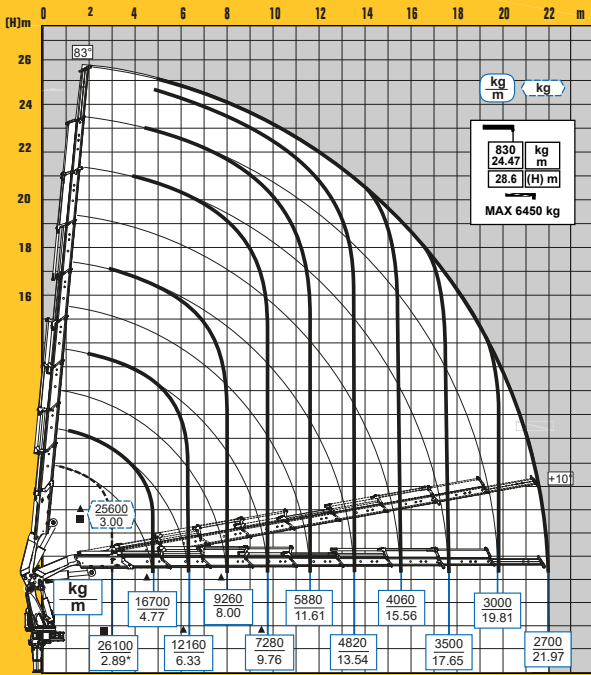
EFFER's integrated pulley system uses a smooth wind-and-drive motion to deliver powerful, effortless lifting with maximum precision. It avoids the need to disassemble the pulleys and rope from the crane. All parts are fully integrated, even when the crane is folded. That saves time, increases operator safety, and reduces truck space needed for the accessories. For the operator, it means smoother, easier, and more controlled lifting with less manual adjustment and less effort.

Technical specifications

Technical data	E-8	E-8 JIB 260Q-6	E-9	E-9 JIB 140Q-6	E-9 JIB 260Q-6
Lifting capacity (kNm)	791	791	786	786	786
Outreach, hydraulic extensions (m)	19,8	31,8	22,0	22,0	34,1
Outreach, with manual extension (m)	22,2	-	24,5	24,5	-
Installation space, rotation area incl. (mm)	2022	2206	2022	2022	2206
Height in folded position (mm)	2518	2725	2518	2518	2725
Weight (kg)	9635	11310	9895	11420	11635
Oil flow	130 l/min	130 l/min	130 l/min	130 l/min	130 l/min



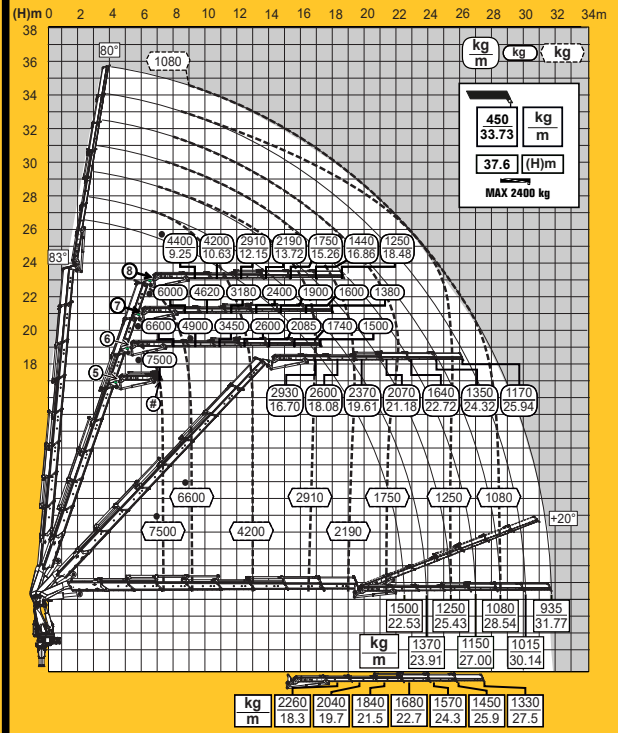
EFFER iQ.1000 HP E-9



PERFORMANCE 100%

464-3873

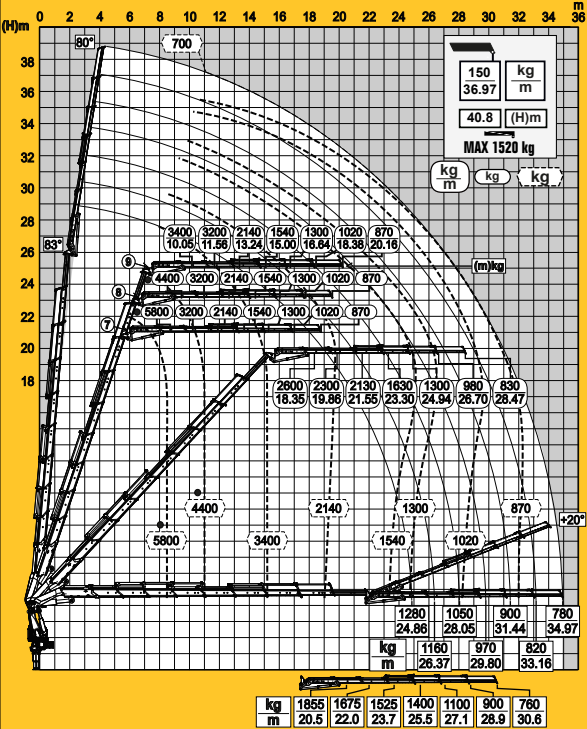
EFFER iQ.1000 HP E-8 JIB 260Q-6



PERFORMANCE 100%

464-3874

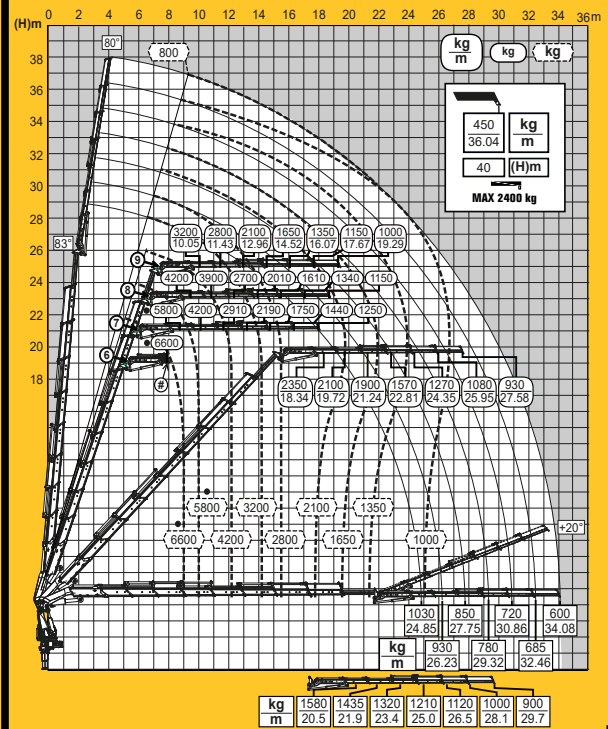
EFFER iQ.1000 HP E-9 JIB 140Q-6



PERFORMANCE 100%

464-3875 01

EFFER iQ.1000 HP E-9 JIB 260Q-6



PERFORMANCE 100%

464-3877



Boost productivity and flexibility with the right accessories

Extend the versatility of your crane by adding one or more tools from the wide range of our accessories. Manufactured to the highest standards, they enhance functionality and performance.



Pallet fork

Handling loads with a pallet fork has many advantages. Since the load is palletised and lifted from underneath, it's possible to lift many different types of loads. A pallet fork is also less expensive than a brick grab, which is the main alternative.



Brick grab

Using a brick grab offers many benefits, including speedier handling of your loads. The load doesn't have to be palletised, and it can be handled even in awkward positions where space is limited. Hiab brick grabs are extremely versatile and robust.



Clamshell buckets

We have a wide range of clamshell buckets available for your loader crane, where the right choice depends on your current operations – and your future plans.

Options range from narrow digging buckets for cable work, to versatile midsize buckets for lifting and digging, and large-volume scooping buckets for moving bulk material. Paired with the right rotator and accessories, your bucket becomes a complete solution built for maximum daily productivity.

MEWP personnel baskets

Our MEWP personnel baskets are compliant with the latest EN280:2022-1 safety standards, providing a safe and stable solution for personnel lifting. Available in Gravity Leveling or Hydraulic Self-Leveling versions, the baskets automatically maintain a balanced position for enhanced safety and operator comfort – even in changing conditions.

Built for durability and reliable performance at height, they are ideal for maintenance applications and fully compatible as an accessory option with MEWP-prepared Hiab cranes equipped with the SPACEevo control system.



[Explore our wide range of loader crane accessories](#)



Services that keep your equipment working



Your customers depend on you. To deliver every day, your equipment must work reliably. HiPerform is Hiab's complete service offering. It brings together maintenance, connected equipment data, and operator training in one package. The goal is simple: fewer breakdowns, better planning, safer operators, and longer equipment life. HiPerform includes three parts: ProCare™, HiConnect™, and HiSkill™.

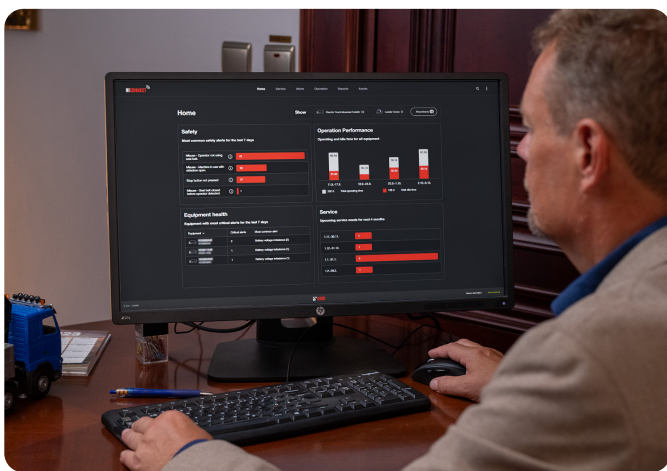
Planned service with fixed costs

ProCare™ is a preventive service agreement for your Hiab equipment. It covers regular maintenance and inspections for a fixed fee. With ProCare™, your equipment is serviced by trained technicians at the right intervals. This helps prevent unexpected breakdowns and costly repairs. You know your service costs in advance and can plan your business with fewer surprises. You choose the service level that fits your operation – we take care of the maintenance.



Know how your equipment is used

HiConnect™ connects your loader crane and gives you access to useful equipment data. You can see how the crane is being used, check service history, and follow upcoming maintenance needs. Because the information is based on actual usage, it's easier to plan service at the right time and reduce unnecessary downtime. With HiConnect™, you have a better overview and better control of your fleet.



Train operators in a safe environment

HiSkill™ is a training simulator that helps operators practice crane operation safely. It combines virtual reality with real controls so operators can train without risk to people, loads, or equipment.

Operators can practice different lifting situations, improve their skills, and gain confidence before working on real jobs. Better training helps reduce accidents, avoid damage, and improve everyday performance.



BUILT TO PERFORM



Hiab (Nasdaq Helsinki: HIAB) is a leading provider of smart and sustainable on-road load handling solutions, committed to delivering the best customer experience every day with the most engaged people and partners. Hiab's premium equipment includes HIAB, EFFER, ARGOS and ING loader cranes, MOFFETT and PRINCETON truck mounted forklifts, LOGLIFT forestry cranes, JONSERED recycling cranes, MULTILIFT skiploaders and hooklifts, GALFAB roll-off cable hoists, ZEPRO, DEL and WALTCO tail lifts, and the service brand HIPERFORM, a comprehensive suite of smart solutions that help maximise the life-cycle value of Hiab's equipment.

www.hiab.com