

TECHNICAL SPECIFICATIONS
X-HIPRO 408



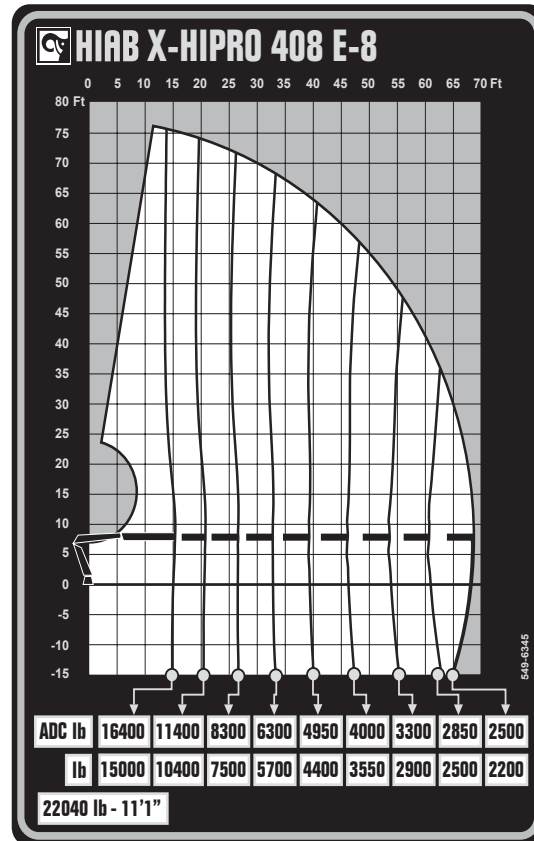
BUILT TO PERFORM



HIAB X-HIPRO 408

TECHNICAL SPECIFICATIONS

| Technical Data | X-HIPRO 408 E-5 / JIB 100X-3 | X-HIPRO 408 E-8 |
|--|------------------------------|-----------------|
| Lifting capacity | | |
| Lifting capacity (ft-lbs) | 264 785 | 253 721 |
| Outreach | | |
| Standard outreach (ft-lbs) | 11' 6" - 22 046 | 10' 6" - 22 046 |
| | 14' 5" - 18 298 | 15' 5" - 16 314 |
| | 19' 8" - 13 007 | 20' 8" - 11 464 |
| | 25' 11" - 9 480 | 26' 7" - 8 267 |
| | 31' 10" - 7 496 | 32' 10" - 6 283 |
| | 38' 5" - 6 173 | 39' 4" - 4 938 |
| | 45' 3" - 5 159 | 46' 3" - 3 968 |
| | - | 53' 6" - 3 307 |
| | - | 61' - 2 822 |
| JIB standard outreach (ft-lbs) | 55' 5" - 2 381 | - |
| | 59' 9" - 2 139 | - |
| | 64' 4" - 1 984 | - |
| | 69' 3" - 1 830 | - |
| Outreach, hydraulic extensions (ft) | 45' 5" | 68' 8" |
| Oil and tank | | |
| Rec OilFlow lo (gal/min) | 26 | 26 |
| Rec OilFlow hi (gal/min) | 32 | 32 |
| Work pressure (psi) | 5 366 | 5 366 |
| Slewing | | |
| Slewing torque (ft-lbs) | 33 928 | 33 958 |
| Slewing angle (degrees) | 999 | 999 |
| Dimensions | | |
| Height in folded position (in) | 8' 9" | 8' 1" |
| Width in folded position (in) | 8' 3" | 8' 5" |
| Weights | | |
| Weight of crane w/o stabilizers (lbs) | 8 821 | 9 914 |
| Weight of crane w/JIB (lbs) | 10 926 | - |
| Additional weight of hose & pipe kit (lbs) | 106 | 236 |
| Weight of stabilizers (lbs) | 1 925 | 1 925 |
| Installation space | | |
| Installation space needed (in) | 4' 7" - 4' 11" | 4' 7" - 4' 8" |



Disclaimer. This table shows a few examples of models, and represents some of all options available. With the opportunity to configure your crane, we can provide you with a crane perfectly tailored to your needs. Please contact your local Hiab sales representative for more information on the variety of options we can offer. We reserve the right to make changes. Illustrations, drawings and data are not always in accordance with the latest version or standard model in production. The models in the pictures may present special equipment or colors.

BUILT TO PERFORM

Hiab (Nasdaq Helsinki: HIAB) is a leading provider of smart and sustainable on road load-handling solutions, committed to delivering the best customer experience every day with the most engaged people and partners. Hiab's premium equipment includes HIAB and EFFER loader cranes, MOFFETT and PRINCETON truck mounted forklifts, MULTILIFT skiploaders and hooklifts, GALFAB roll-off cable hoists, and WALTCO tail lifts, and the service brand HIPERFORM, a comprehensive suite of smart solutions that help maximize the life-cycle value of Hiab's equipment. As the industry pioneer, Hiab continues to make on road load-handling smarter, safer and more sustainable to build a better tomorrow.

www.hiabgroup.com

