

TECHNICAL SPECIFICATIONS

X-HIPRO 358



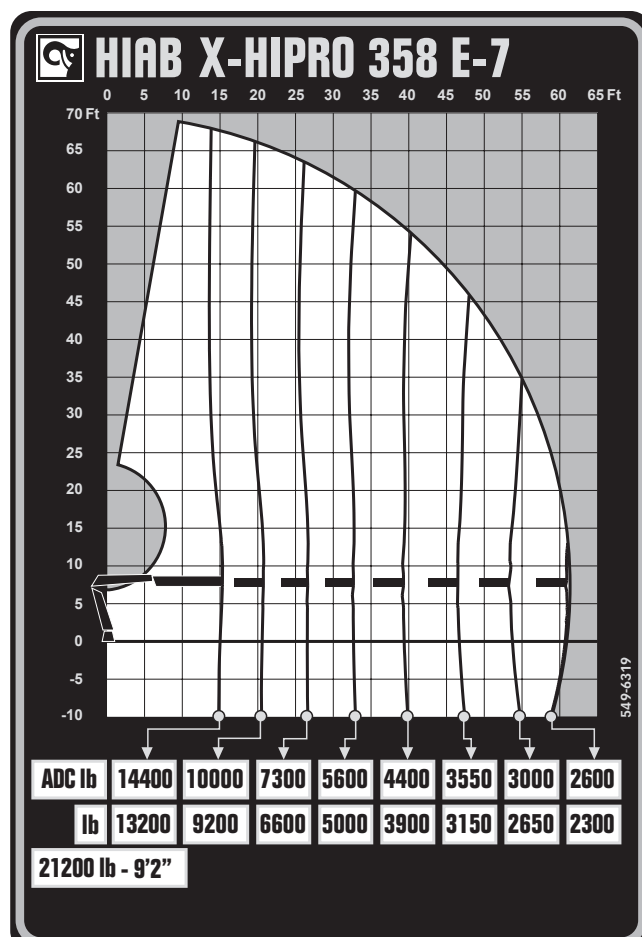
BUILT TO PERFORM



HIAB X-HIPRO 358

TECHNICAL SPECIFICATIONS

Technical Data	X-HIPRO 358 E-5 / JIB 100X-2	X-HIPRO 358 E-7
Lifting capacity		
Lifting capacity (ft-lbs)	230 857	222 744
Outreach		
Standard outreach (ft-lbs)	8' 6" - 20 724	9' 2" - 21 164
	14' 9" - 15 432	15' 5" - 14 330
	20' - 11 023	20' 8" - 10 031
	25' 11" - 8 157	26' 7" - 7 275
	32' 2" - 6 393	32' 10" - 5 512
	38' 9" - 5 203	39' 4" - 4 365
	45' 7" - 4 365	46' 3" - 3 572
	-	53' 6" - 2 998
JIB standard outreach (ft-lbs)	55' 9" - 2 050	-
	60' - 1 874	-
	64' 8" - 1 720	-
Outreach, hydraulic extensions (ft)	46'	61'
Oil and tank		
Rec OilFlow lo (gal/min)	26	26
Rec OilFlow hi (gal/min)	32	32
Work pressure (psi)	5 076	5 076
Slewing		
Slewing torque (ft-lbs)	33 928	33 928
Slewing angle (degrees)	999	999
Dimensions		
Height in folded position (in)	8' 9"	8'
Width in folded position (in)	8' 3"	8' 3"
Weights		
Weight of crane w/o stabilizers (lbs)	8 402	9 151
Weight of crane w/JIB (lbs)	10 307	-
Additional weight of hose & pipe kit (lbs)	431	180
Weight of stabilizers (lbs)	1 215	1 214
Installation space		
Installation space needed (in)	4' 6" - 4' 7"	4' 7"



Disclaimer. This table shows a few examples of models, and represents some of all options available. With the opportunity to configure your crane, we can provide you with a crane perfectly tailored to your needs. Please contact your local Hiab sales representative for more information on the variety of options we can offer. We reserve the right to make changes. Illustrations, drawings and data are not always in accordance with the latest version or standard model in production. The models in the pictures may present special equipment or colors.

BUILT TO PERFORM

Hiab (Nasdaq Helsinki: HIAB) is a leading provider of smart and sustainable on road load-handling solutions, committed to delivering the best customer experience every day with the most engaged people and partners. Hiab's premium equipment includes HIAB and EFFER loader cranes, MOFFETT and PRINCETON truck mounted forklifts, MULTILIFT skiploaders and hooklifts, GALFAB roll-off cable hoists, and WALTCO tail lifts, and the service brand HIPERFORM, a comprehensive suite of smart solutions that help maximize the life-cycle value of Hiab's equipment. As the industry pioneer, Hiab continues to make on road load-handling smarter, safer and more sustainable to build a better tomorrow.

www.hiabgroup.com

