

TECHNICAL SPECIFICATIONS

X-DUO 218



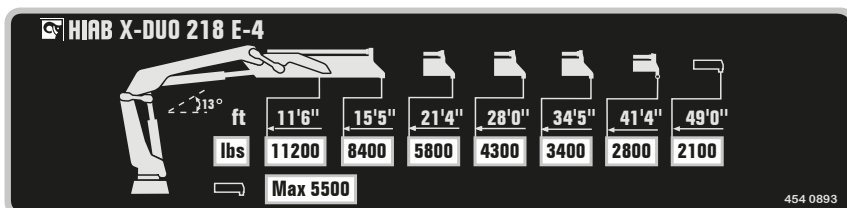
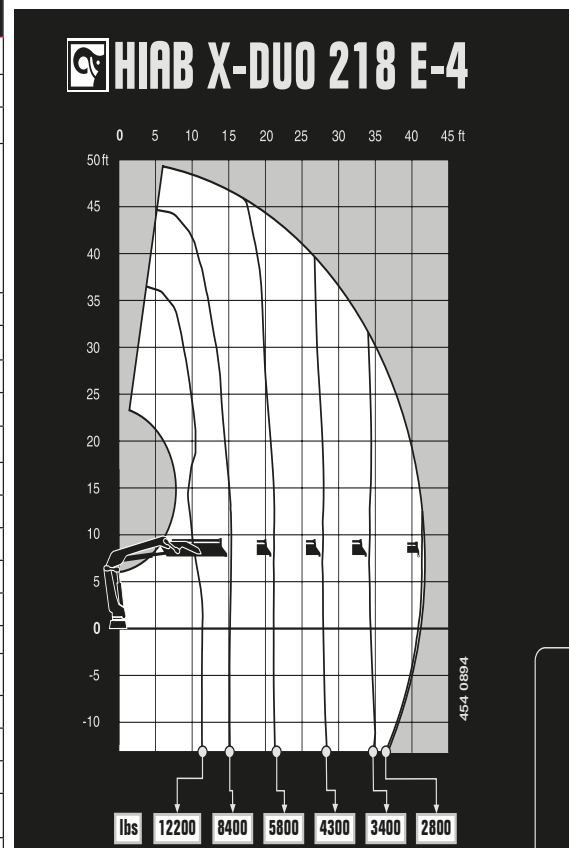
BUILT TO PERFORM



HIAB X-DUO 218

TECHNICAL SPECIFICATIONS

Technical Data	X-DUO 218 B-2	X-DUO 218 B-3	X-DUO 218 B-4	X-DUO 218 E-4
Lifting capacity				
Lifting capacity (ft-lbs)	136 228	132 983	129 737	129 590
Outreach				
Standard outreach (ft-lbs)	10' 10" - 12 566	11' 6" - 11 685	11' 6" - 11 243	11' 6" - 11 243
	15' 1" - 9 039	15' 5" - 8 488	15' 5" - 8 267	15' 5" - 8 378
	21' - 6 393	21' - 6 063	21' - 5 842	21' 4" - 5 842
	27' 7" - 4 894	27' 7" - 4 542	26' 7" - 4 277	27' 11" - 4 277
	-	34' 5" - 3 616	34' 5" - 3 307	34' 5" - 3 395
	-	-	41' 4" - 2 734	41' 4" - 2 778
Outreach, hydraulic extensions (ft)	28' 6"	35' 6"	42' 5"	41' 10"
Oil and tank				
Rec OilFlow lo (gal/min)	13	13	13	13
Rec OilFlow hi (gal/min)	16	16	16	16
Work pressure (psi)	4 467	4 467	4 467	4 467
Slewing				
Slewing torque (ft-lbs)	20 873	20 873	20 873	20 873
Slewing angle (degrees)	415	415	415	415
Dimensions				
Height in folded position (in)	7' 5"	7' 5"	7' 5"	7' 5"
Width in folded position (in)	8' 2"	8' 2"	8' 2"	8' 2"
Weights				
Weight of crane w/o stabilizers (lbs)	4 134	4 486	4 795	5 060
Additional weight of hose & pipe kit (lbs)	159	159	234	234
Weight of stabilizers (lbs)	944	944	944	944
Installation space				
Installation space needed (in)	3' 2" - 3' 8"	3' 2" - 4' 11"	3' 2" - 3' 8"	2' 10" - 3' 11"



Disclaimer. This table shows a few examples of models, and represents some of all options available. With the opportunity to configure your crane, we can provide you with a crane perfectly tailored to your needs. Please contact your local Hiab sales representative for more information on the variety of options we can offer. We reserve the right to make changes. Illustrations, drawings and data are not always in accordance with the latest version or standard model in production. The models in the pictures may present special equipment or colors.

BUILT TO PERFORM

Hiab (Nasdaq Helsinki: HIAB) is a leading provider of smart and sustainable on road load-handling solutions, committed to delivering the best customer experience every day with the most engaged people and partners. Hiab's premium equipment includes HIAB and EFFER loader cranes, MOFFETT and PRINCETON truck mounted forklifts, MULTILIFT skiploaders and hooklifts, GALFAB roll-off cable hoists, and WALTCO tail lifts, and the service brand HIPERFORM, a comprehensive suite of smart solutions that help maximize the life-cycle value of Hiab's equipment. As the industry pioneer, Hiab continues to make on road load-handling smarter, safer and more sustainable to build a better tomorrow.

www.hiabgroup.com

